



N
HUSKY 101
ORIENTATION

Community Life at Northeastern

Housing and Residential Life
Off Campus Engagement and Support
Office of Student Conduct and Conflict Resolution
Northeastern University Police Department



University Housing



- You're moved in!
- RAs and RDs available in your building
- First floor meeting
- Welcome Week Events

Contact Housing and Residential Life

northeastern.edu/housing

617.373.2814

housing@northeastern.edu

Get in touch with your community staff by sending them an email or going to their offices (contact information can be found on our website) or going to the proctor at the front desk



N
HUSKY 101
ORIENTATION

Off Campus
Engagement and Support



Off Campus Engagement and Support

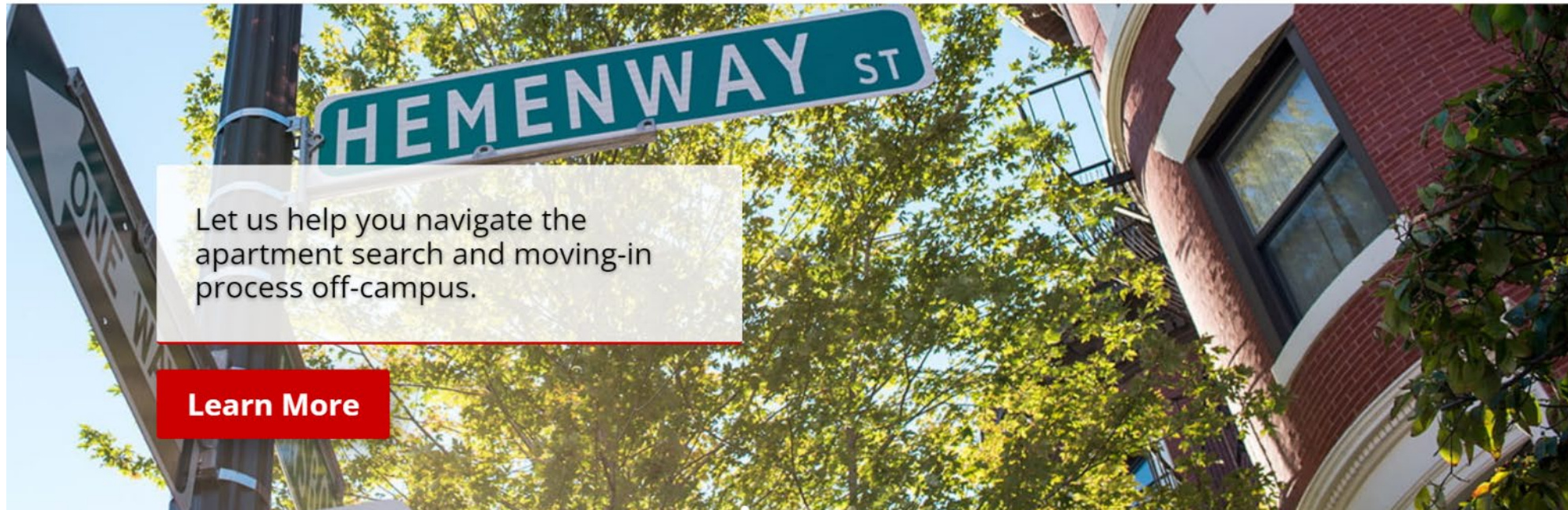
- Apartment search support
 - Best practices for subletting, roommate selection, avoiding scams, choosing a realtor.
- Lease and rental education
 - Advising, video series, workshops, presentations
- Help with problems; navigating concerns
- Programming and outreach
 - Signature events
 - Student Community Ambassador programs
 - Social media and newsletters to stay informed
- Civic engagement and community building

Fall 2023 Entry - please do not duplicate or distribute



Off Campus Website

northeastern.edu/offcampus



Let us help you navigate the apartment search and moving-in process off-campus.

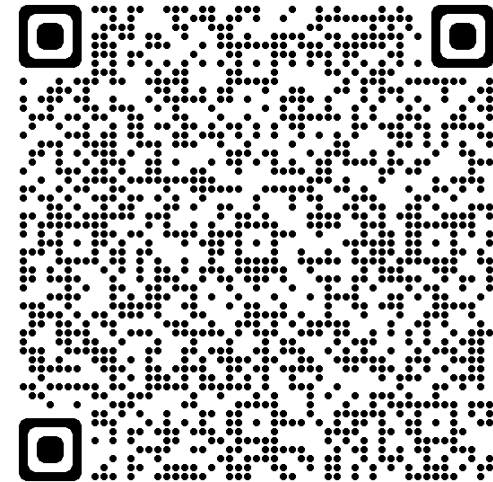
[Learn More](#)

Apartment Condition Statement

- Form due within 15 days of moving in (lease start)
- Purpose: Documents current condition of the apartment
- Complete it – save a copy, send a copy to your landlord
- Take photos of apartment condition for your records

- What about maintenance needed?

- Is my apartment up to code?
 - Call 311 or submit using BOS:311 app



Settling In – What to Know

- Update I Am
Here local address
- Set-up utilities, rent
payments, bills
- Know trash protocols –
Boston Trash app
- Obtain furniture
- Rental insurance



Living Off Campus

6 EASY WAYS TO BE A GOOD NEIGHBOR



INTRODUCE YOURSELF!

Get to know your neighbors! Build a relationship with your new neighbors by introducing yourself and sharing contact info.



BE HELPFUL

Offer your assistance if needed and watch out for one another.



MINDFULNESS

Not all neighbors are college students so be mindful and try to keep the noise down.



TRASH DAY!

Check the pick up schedule for your street and avoid the \$25 tickets for illegal trash disposals!



GO GREEN

Recycle!!! Check the pick up schedule and proper disposal location and protocol for your street.



GET INVOLVED

Explore your neighborhood and help with local cleanup or other involvement opportunities like neighborhood committee meetings.

- Create a roommate agreement
- Learn your renter's rights and responsibilities
- Know good neighbor actions off campus
- Download NUPD Safe Zone and Red Eye apps

Community Ambassadors



- Peer resource and advocates
 - Coordinate workshops and events
 - Involved on and off campus
 - Lead community service projects
-
- **Meet CAs during Fall Fest and Welcome Week programs!**

Get Connected

- September Events:
 - September 1st
 - Welcome Week – 9/6 in Centennial
 - Off Campus Fest – September 20th Krentzman Quad
 - Volunteer Days and Breakfast Club
 - Off Campus Adventure Series
 - Coffee Chats with Community Ambassadors
- Social Media - @NUoffcampus
- Newsletter



Viva Engage (Yammer) Community



- Browse threads from fellow Northeastern students off campus
- View announcements from our team
- Gather student recommendations
- Directly message and connect with students living off campus
- How is this different from the NU Housing Database?
 - Great for last minute inquiries – roommate/sublets!
 - Student to student; not property owners or realtors
 - Note: NU only – Housing Database connects with nearby colleges

Off Campus Engagement and Support

151 Speare

Mon-Fri: 9am-5pm

617.373.8480

northeastern.edu/offcampus

offcampus@northeastern.edu

Virtual bookings available.

Instagram, Facebook, Twitter:
@NUoffcampus





HUSKY 101
ORIENTATION

**Office of Student Conduct
and Conflict Resolution**

Fall 2023 Entry - please do not duplicate or distribute



Purpose/Goal/Philosophy



- Impact on Others
- Responsibility
- Accountability
- Self Reflection
- Learning
- No Husky Alone, A Husky Everywhere

TOP Challenges

- Noise (on & off-campus!)
- Alcohol
- Academic Integrity
- Drugs
- Communication & Relationships



Alcohol and Drugs

Alcohol

- 21 is the magic number to possess, consume, OR transport
- Providing the beverage OR the space
- Presence
- Fake IDs



Drugs

- Possession or consumption of illegal drugs is not permitted at Northeastern. This includes marijuana!
- Possession of drug paraphernalia is not permitted
- Distribution
- Use of prescription drugs not prescribed to the student

Medical Amnesty

Medical Amnesty is:

- Granted only when someone proactively seeks help for self or others
- Granted only when the calling party stays with the student experiencing the emergency until medical assistance arrives
- Available for assessment of health & well-being due to the use of alcohol AND/OR drugs
- A way to connect the student receiving medical assessment/treatment with resources – requires a meeting with OPEN
- Typically shared with parents/guardians
- Available to the caller as many times as necessary

Medical Amnesty is not:

- Granted when students are found by employees doing their job
- Typically granted more than once to the student needing medical attention
- A record our office will share when asked about past conduct history

NUPD Emergency: 617.373.3333
Emergency: 911
Download the SafeZone App

Civility and Respect

- Be respectful of others
- Use your time at Northeastern to learn about yourself and others!
- Talk with people you trust about uncomfortable interactions
- Report any behavior that upsets you, is violent, or prevents you from completing daily tasks – NUPD, OUEC, We Care, OSCCR
- If you are not sure how to handle a situation, ask for help!

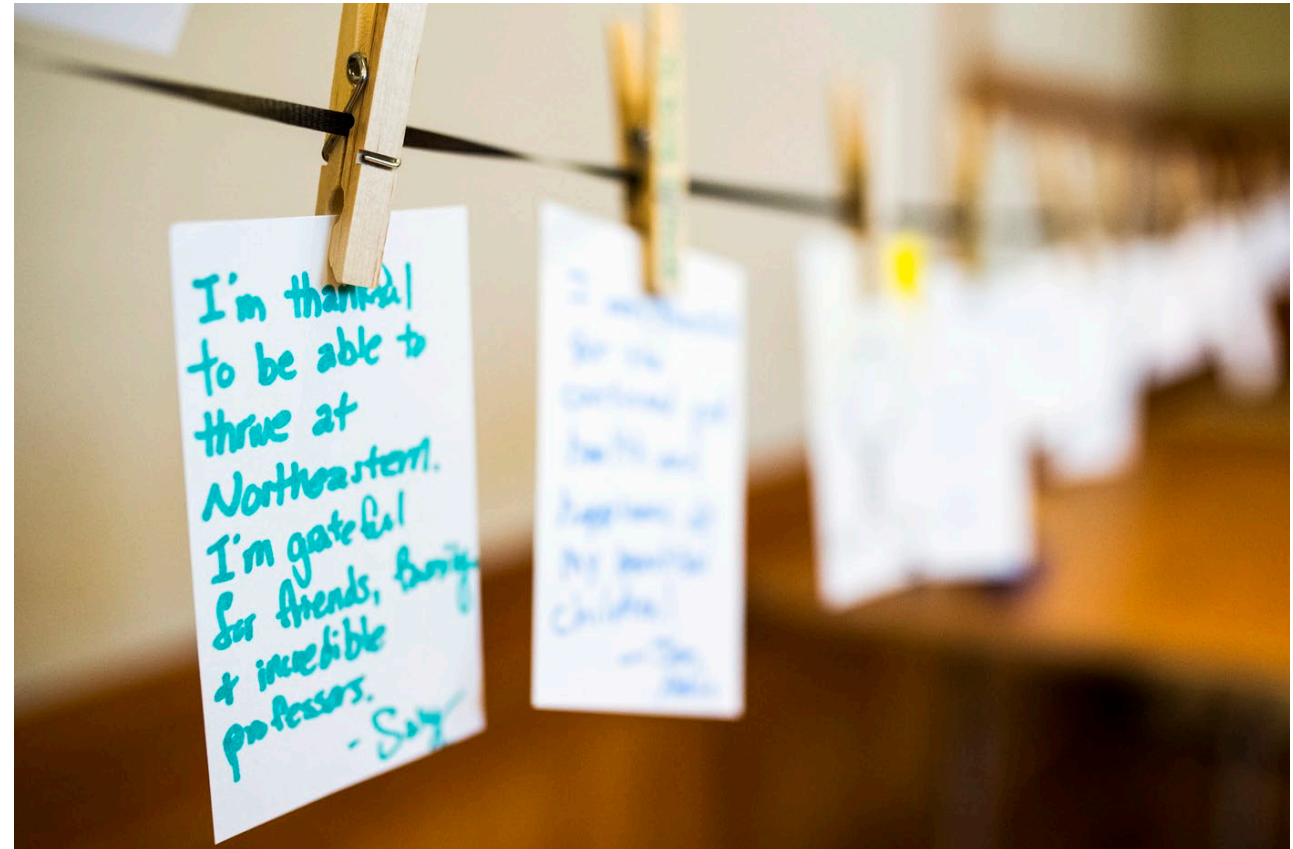


What Happens After a Violation Occurs

- Report submitted
- Reviewed and hearing type determined
 - One on one: Residence Halls or OSCCR
 - Sanctions include Written Warning, Probation, Deferred Suspension
 - Board Hearing: OSCCR
 - Sanctions include suspension/expulsion
- Responsible findings result in sanctions that affect student status and provide education

Resources and Support

- Make every effort to speak with students regarding incident
- Connect students with campus resources
- Hearing Advisors
- Parents/Family
- Mediation
- Presentations and trainings
- DRC connections
- Language translation services



Working with Family Members

- Empowering students to communicate
- We can talk to parents about our process in general
- Students can provide permission to share more detail if they wish
- Parent notification letters



Contact OSCCR

Website: osccr.sites.northeastern.edu

Email: osccr@northeastern.edu

Phone: 617.373.4390

Office: 204 Ell Hall

Twitter & Instagram: @OSCCR_NU





HUSKY 101
ORIENTATION

**Northwestern University
Police Department**



Where you feel like you belong...

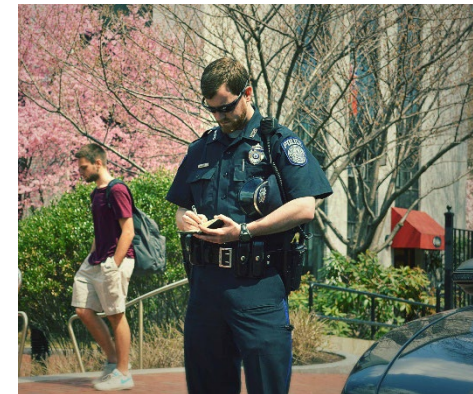
Department Personnel

- 70 +/- Sworn, Trained, Armed Police Officers
- 25 +/- Community Service Officers
- Emergency Medical Technicians
- Investigations Unit
- Community Engagement Unit
- Emergency Management Office
- International Security Office
- Professional Standards Unit



Where you feel like you belong...

- Police Officers
- Community Service Officers
- Contract Security
- Contract Parking Officers
 - Equipped with radios to contact NUPD in case of an emergency



Where you feel safe...

- Emergency Blue Light Phones
- Safety Escort Services
- CCTV Systems
- AEDs
- Fire & Security Alarms
- 24/7 Foot, Cruiser, and Bike Patrol

For On-Campus Emergencies:

Dial **3333** from any campus phone
or **617.373.3333** from your cellphone

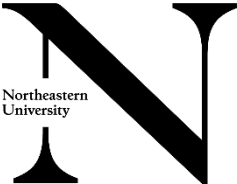
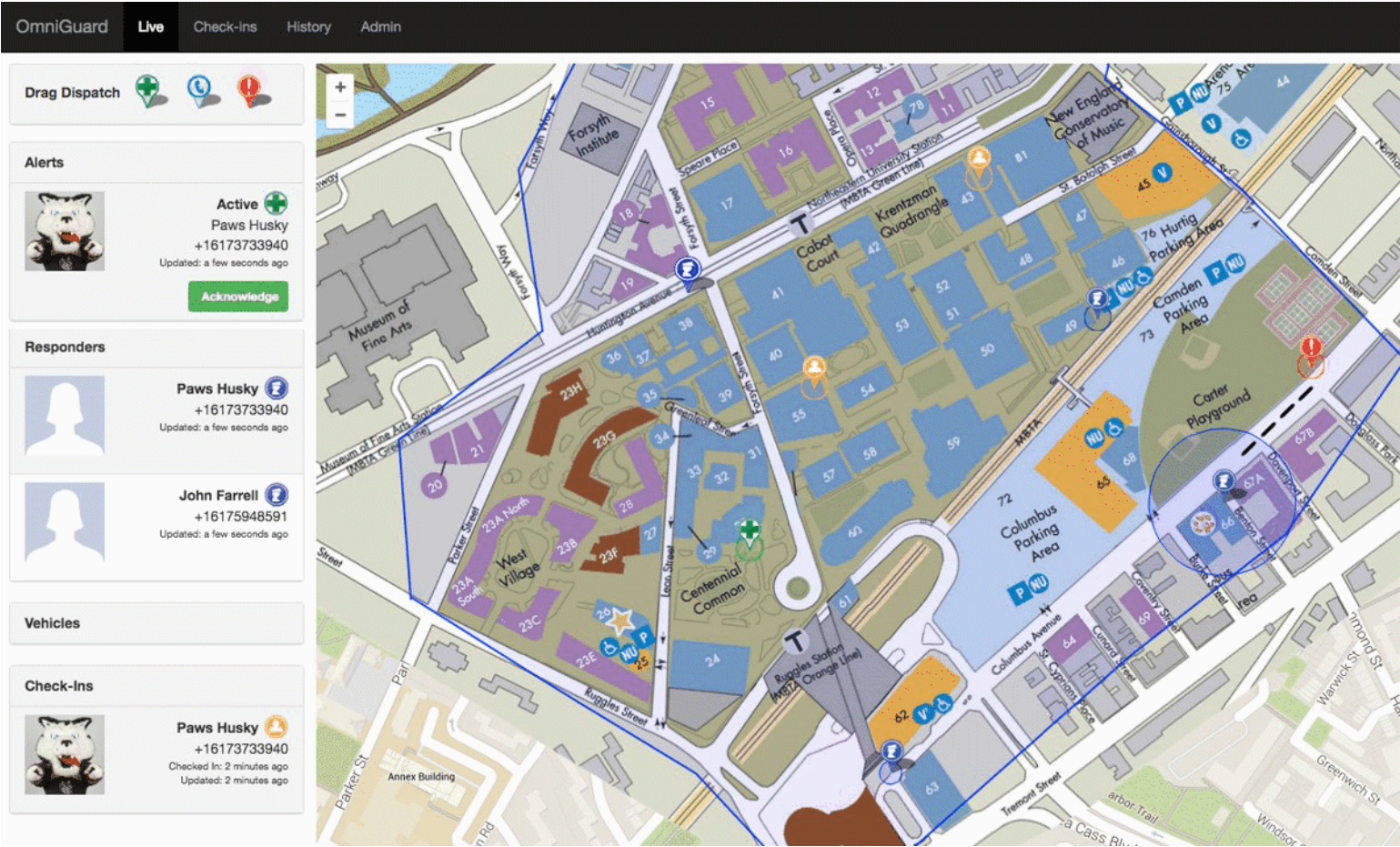
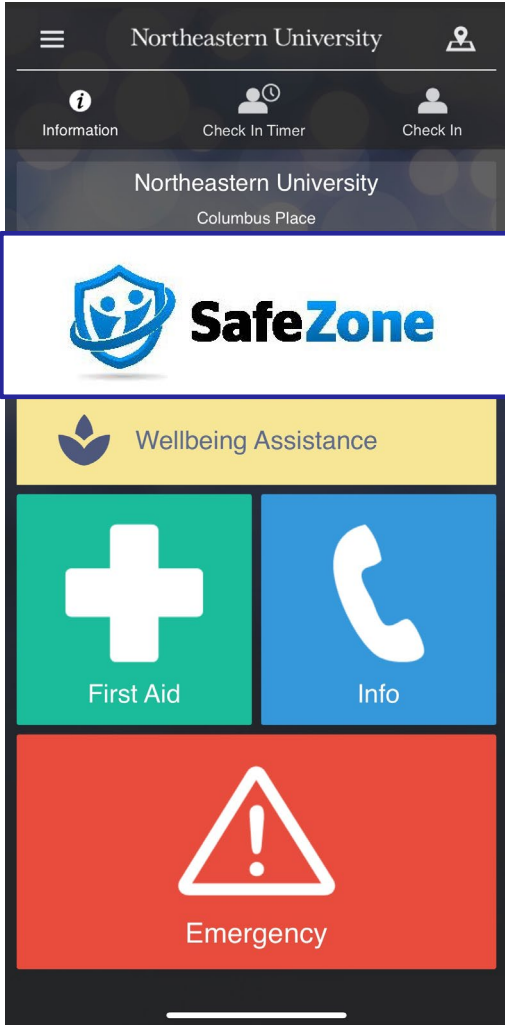
For Off-Campus Emergencies:

Dial **911**

For All Other Inquiries:

Dial 2121 or
617.373.2121

Where you feel safe...



Where you feel safe...

What are the most frequently reported crimes?



Where you feel safe...

Crimes of Opportunity

Most Common Areas For Theft:

Snell Library



Student Center



Common Areas In Res. Halls



Northeastern Students Are Partners In Community Safety and Security!



Crimes of Opportunity

Most Common Items:

Cellphones and Tablets



Backpacks



Laptops



Bicycles



Northeastern Students Are Partners In Community Safety and Security!

Fall 2023 Entry - please do not duplicate or distribute

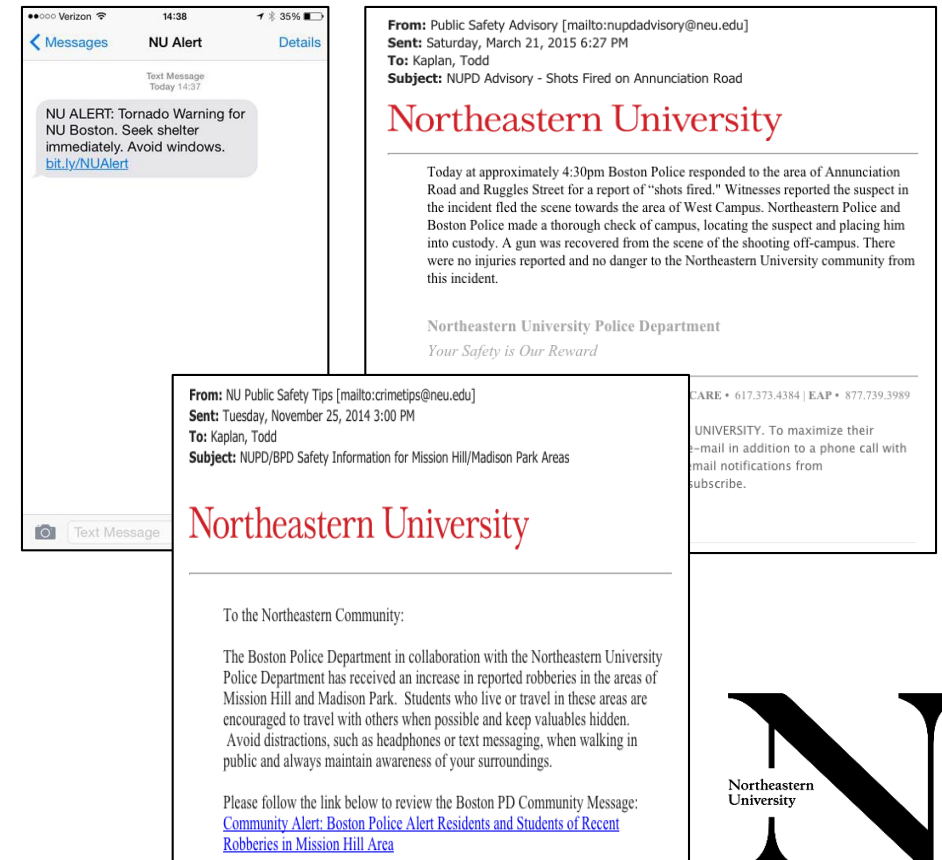


Northeastern
University

Where you feel safe...

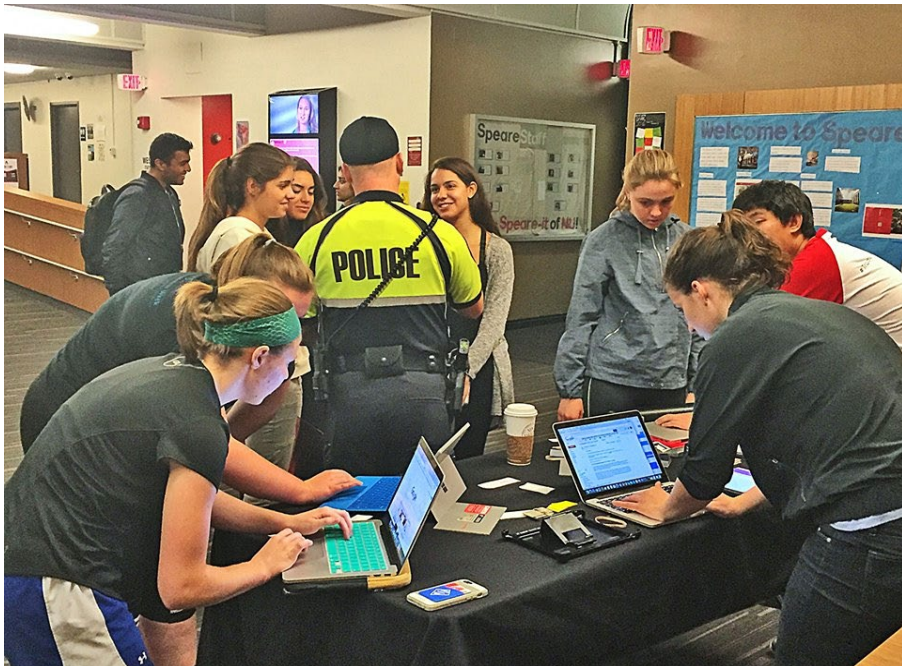
NU ALERT: Emergency Messaging Delivered Via Email & Text

- Emergency Alerts
 - Immediate threat to campus safety and security
- Timely Warnings
 - Incidents that are not immediate threats and/or potential crime patterns on/near campus
- NUPD Advisory
 - Targeted messaging providing information about potential/immediate threats to specific areas on/near campus.



Where you can grow and explore...

- NUPD offers free property registration for laptops, bikes, tablets, etc...
- Property registration creates obstacles for potential thieves and provides the best chance for recovery.
- To begin the registration process go to www.bit.ly/nupdregister



Where you can grow and explore...

Community Engagement:

Key to NUPD's Mission

- Basic & Advanced Self-defense programs for men and women
- Situation Awareness and CPR Trainings
- Safety Talks and Presentations
- Aim to Prepare Program

Our goal is to provide the safest learning and living environment for students, faculty, staff and community!



Where you can grow and explore...

Community Resource Dogs:

NUPD has a K9 Unit with two dogs, Cooper and Sarge, who serve our University and local communities in special ways.



Fall 2023 Entry - please do not duplicate or distribute

Contact NUPD

716 Columbus Avenue, 100CP

nupd.northeastern.edu

617.373.2696

Deputy Chief Ruben Galindo

r.galindo@northeastern.edu

Social Media

@northeasternpd

