

**Simulation 3. Oral Health Risk Assessment
Case Scenario 2
Student Copy**

Patient information.

Name: Vance

Age: 57

Setting: Primary care clinic

Chief concern: Follow-up visit after receiving new medications for high blood pressure and depression.

Medical history:

- High blood pressure—taking medication
- Depression—taking medication
- No other general health conditions

Script.

As part of Vance's appointment, you decide to address his oral health.

Provider: When was the last time you visited a dentist?

Provider: How are your dentures fitting?

Provider: Do you take your dentures out at night?

Provider: How often do you get dry mouth, and what do you do about it?

Provider: How often do you drink lemonade or sprite?

Provider: How many times a day do you brush and floss?

Provider: Do you smoke or use tobacco products?

Provider: How often?

Photographs.

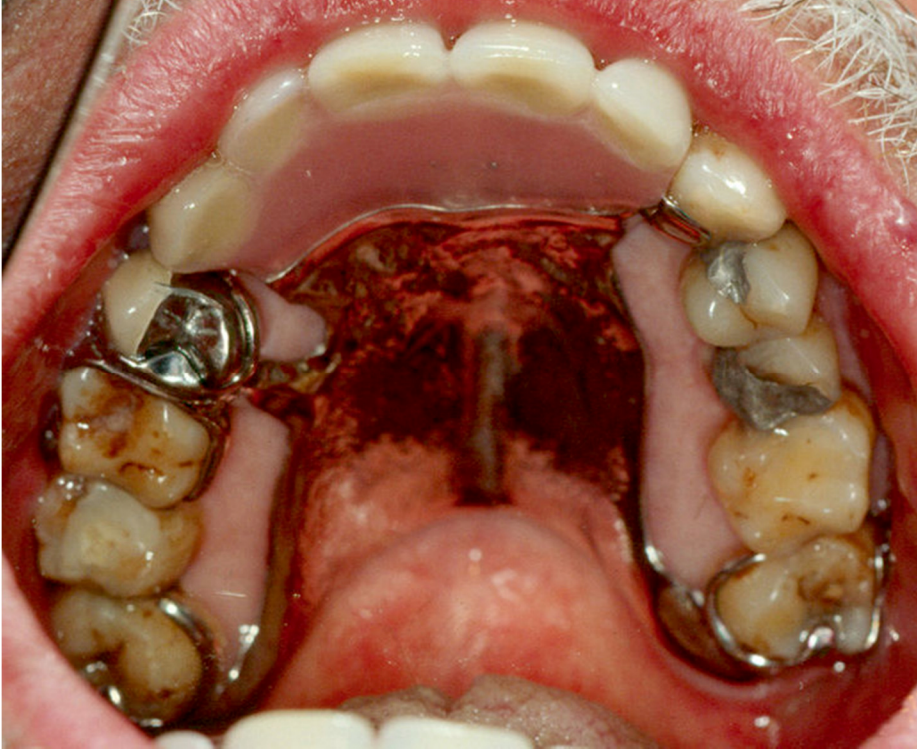


Photo: public domain



Photo: Kozlovsk~commonswiki