



Northeastern University

Bouvé College of Health Sciences

Students Advancing Collaboration to Improve Oral-Systemic Health

Kathryn Robinson, MHA,Ed., BSN; Lauren Jarmusz, DPT-s; Sana Mandal, Pharm.D-s

Interprofessional ♦ Research ♦ Innovate ♦ Serve ♦ Educate

iRISE Overview

Bouvé College of Health Sciences
Bouvé College of Health Sciences at Northeastern University is located in Boston, Massachusetts, U.S.A.
Bouvé College offers 8 areas of study:

- Pharmacy
 - Physical Therapy
 - Physician Assistant
 - Speech Language Pathology & Audiology
 - Counseling & Applied Educational Psychology
 - Nursing
 - Health Sciences
 - Health Informatics
- Bouvé's mission is to inspire and create the next generation of interprofessional healthcare leaders for the well-being of our global community.
- iRISE works in collaboration with Bouvé students, faculty and administration to meet the College's strategic goal to advance interprofessional education.



Mission
Promote an interprofessional collaborative environment where students across healthcare professions are offered opportunities to cultivate leadership and innovation skills in an effort to improve patient-centered care.

Vision

- Our vision is to improve overall health and well being by creating generations of health professionals with an interprofessional mindset.
- We have implemented oral-systemic health as a driver for interprofessional education and patient-centered care.

Objectives
The iRISE Student offers undergraduate and graduate healthcare students relevant educational, networking, and service opportunities by employing the R.I.S.E strategy.

Research: Mentorships with Bouvé faculty, including the Interprofessional Research Education and Practice [IPREP] Committee members.

Innovate: Improve current healthcare systems by providing tools that encompass the four domains of the Core Competencies for Interprofessional Collaborative Practice.

Serve: Contribute to Northeastern's initiative of community service on campus and surrounding communities through outreach programs.

Educate: Establish an experiential learning environment through interdisciplinary activities enhancing the quality of interprofessional education.



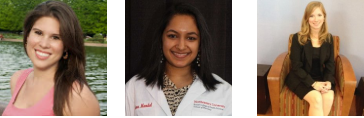
Accomplishments

- Wampanoag Tribe Service-Learning
- Northeastern Oral Health Fair Display
- Student Simulation Lab Experience
- Empowerfest
- Myomo Viewing
- MIT BioInnovations Conference
- American Dental Education Association Conference
- World Oral Health Day Display
- Recruitment Events

Future Initiatives

- General**
 - Build leadership board
 - Develop interprofessional relationships with other student organizations
 - Funding through research grants
- Research**
 - Form partnerships with research faculty for student positions
 - Document participation and contributions
 - Submit work to conferences
- Innovate**
 - Interprofessional Student Recognition Award
 - Entrepreneurship collaborations
- Serve**
 - Service-learning partnerships across University and local community
 - Planning of "service days"
- Educate**
 - Participating in conferences
 - Organizing lecture series

Current Student Leadership



Co-Chair
Laure Jarmusz
DPT-s 2016

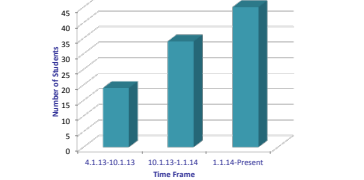
Co-Chair
Sana Mandal
Pharm.D-s 2015

Oral Health Liaison
Kathryn Robinson
MHA/Ed., BSN

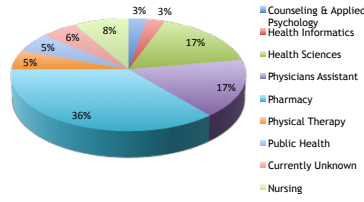
Future Leadership Positions

- Co-Chair
- iRISE Project Managers
- Treasurer
- Class Representatives
- Web & Social Media Coordinator
- iRISE Director
- Secretary
- Advertising Chair
- General Members

Membership Progression April 2013 – April 2014



Interprofessional Membership



Faculty Advisor

Dr. Maria Dolce
Associate Professor,
School of Nursing
Executive Director,
Innovations in
Interprofessional Oral Health

Acknowledgements

Dr. Terry Fulmer
Dean
Bouvé College of
Health Sciences

Dr. Jeanine Mount
Associate Dean
Undergraduate Education

iPREP Faculty Committee Members

Contact Us!

Lauren Jarmusz, Co-Chair: jarmusz.l@husky.neu.edu
Physical Therapy Student, Class of 2016

Sana Mandal, Co-Chair: mandal.s@husky.neu.edu
Pharmacy Student, Class of 2015

Kathryn Robinson, Graduate Advisor: k.robinson@neu.edu
PhD Student, School of Nursing

Service-Learning



BioInnovations Conference
MIT, 2014
(Sana Mandal, Jen Cardone,
Lauren Jarmusz)



World Oral Health Day
Northeastern University, 2014
(Kathryn Robinson)



Health Fair
Northeastern University, 2013
(Kathryn Robinson, Sana Mandal)