



Northeastern University



Interprofessional Research, Education and Practice (iPREP) by Design

All Together Better Health
Conference VII

Pittsburgh, Pennsylvania

June 8, 2014



AUTHORS

Maria Dolce, PhD, RN, CNE

Associate Professor, *School of Nursing*

m.dolce@neu.edu

Shan Mohammed, MD, MPH, FAAFP

Clinical Associate Professor, *School of Health Professions*

s.mohammed@neu.edu

Kathryn Robinson, MHA/Ed, BSN

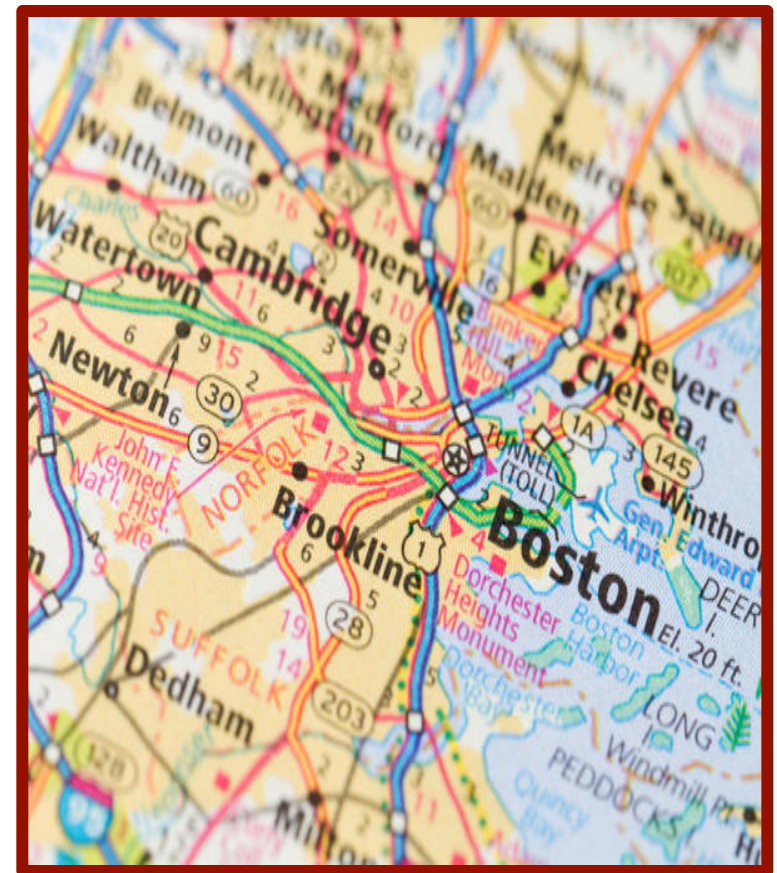
PhD Student, *School of Nursing*

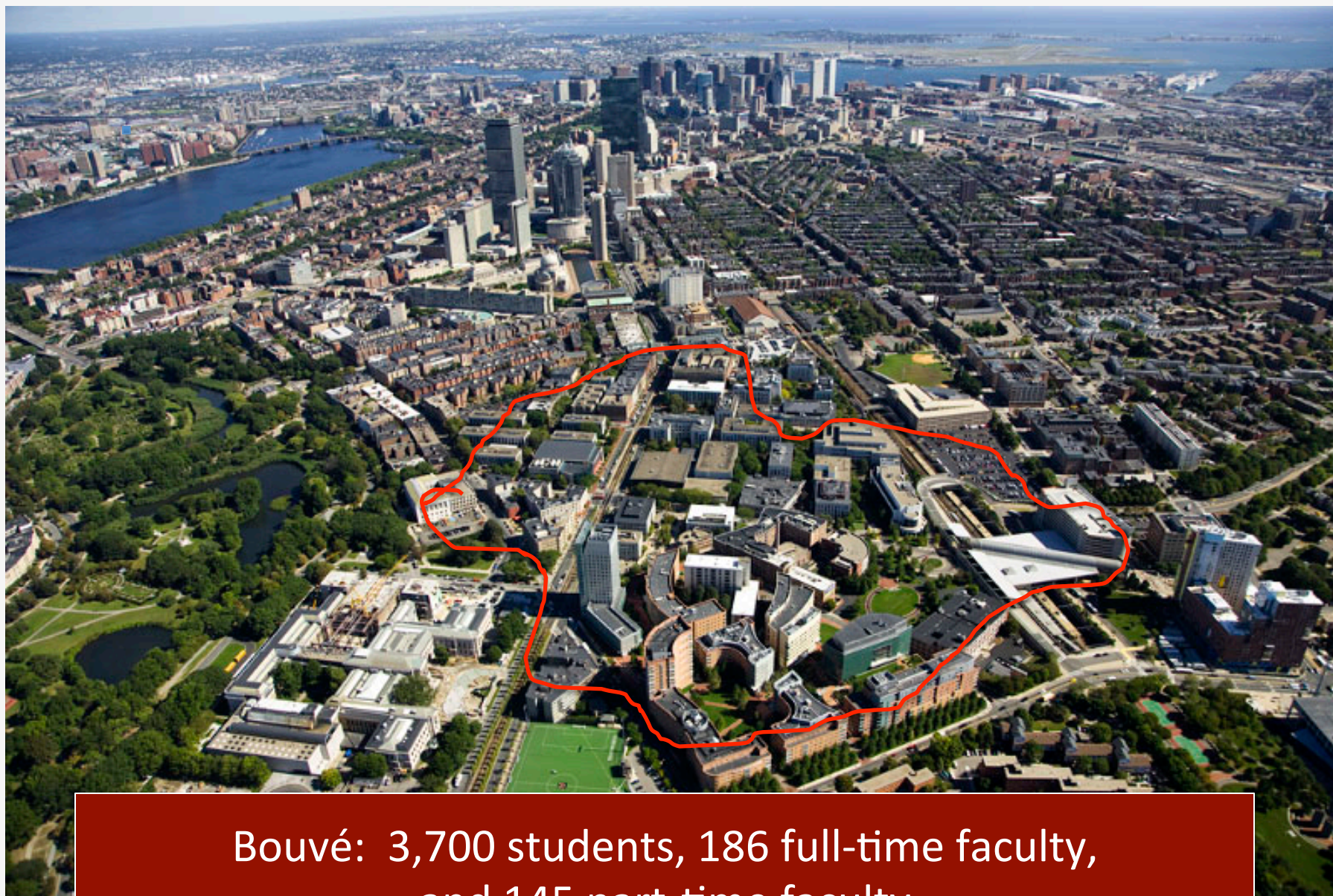
k.robinson@neu.edu



Roadmap

- Describe the iPREP model for advancing innovations in interprofessional research, education, and practice across academic programs, schools and institutions.
- Apply principles and best practices to enable interprofessional collaboration for improving health.





Bouvé: 3,700 students, 186 full-time faculty,
and 145 part-time faculty



Bouvé College of Health Sciences

Eight academic programs in three schools:

- Health Professions
- Nursing
- Pharmacy

Northeastern University
Bouvé College of Health Sciences



The mission of Bouvé College is to **inspire and create the next generation of interprofessional healthcare leaders** for the well-being of our global community.

Bouvé emphasizes an **interdisciplinary approach** that reflects today's health care team.



Bouve Strategic Foci

1. Self Care/Self Management
2. Healthy Aging (Lifespan)
3. Urban Population Health
4. Drug Discovery and Delivery

- Pharmacy
- Physician Assistant
 - Nursing
- Physical Therapy
 - Public Health
 - Speech Language Pathology & Audiology
- Counseling and Applied Educational Psychology
 - Exercise Science
 - Health Sciences



iPREP Frameworks



- WHO Framework for Action_[3].
- Core Competencies for Interprofessional Collaborative Practice_[2]
- Triple Aim_[1].



iPREP @ Bouvé seeks to align all activities with the core competencies for interprofessional collaborative practice (Interprofessional Education Collaborative Expert Panel, 2011):

- INTERPROFESSIONAL COMMUNICATION
- VALUES/ETHICS
- ROLES/RESPONSIBILITIES
- TEAMS AND TEAMWORK



iPREP @ Bouvé

Values / Ethics of Inter-Professional Practice
Inter-Professional Communication

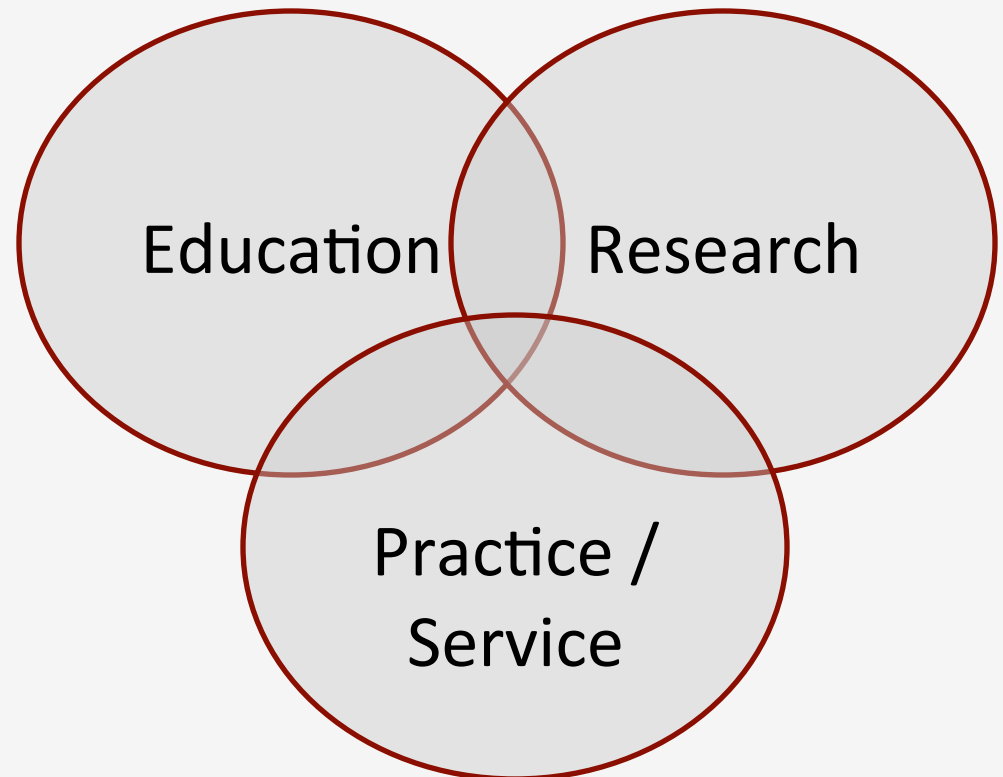
Roles and Responsibilities
Teams and Teamwork

Drug Discovery and Delivery

Self Care/Self Management

Healthy Aging (Lifespan)

Urban Population Health



Pharmacy, Physician Assistant, Nursing, Physical Therapy,
Public Health, Speech Language Pathology & Audiology, Counseling and
Applied Educational Psychology, Exercise Science, Health Sciences



iPREP Strategic Goals

Bouvé College of Health Sciences 2013 – 2014 Strategic Plan

Goal or Objectives	Metric(s) Used to Measure Progress	How Does This Relate to Your Unit’s Strategic Plan?	How Does This Relate to the University’s Plan?
To be a national model for interprofessional health education	1) Four new interdisciplinary publications under review by Spring 2014 2) IPEC modules into curriculum by Spring semester 2014 3) Two new interdisciplinary training grants submitted in 2014 Two national presentations on IPEC	Bouvé curriculum as a National Model for Interprofessional Health Education	“Further increase in flexible, high quality degree programs that align with emerging fields and new career opportunities” “Broader range of innovation, flexible degree programs” “More and better equipped learning facilities”



iPREP Committee Charges

- Work with Undergraduate and Graduate Curriculum Committees to develop policies concerning interprofessional curriculum, courses, and clinical experiences. The iPREP Committee should take the lead in this activity.
- Work with the Faculty Research and Development Committee and College/University administrators to develop policies for acknowledgement and reward structures for interprofessional and intercollegiate (joint appointment) research efforts. The Faculty Research and Development Committee will take the lead in this activity.



iPREP consists of 14 appointed members:

One faculty representative from each major academic program/department

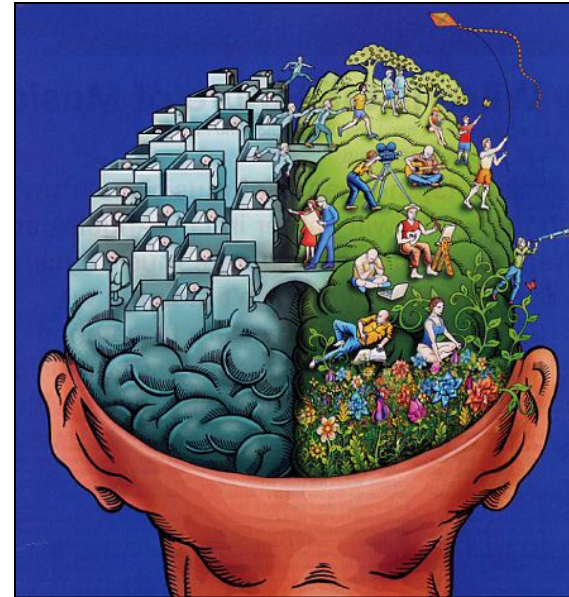
- Nursing
- Pharmacy
- Physical Therapy
- Counseling and Applied Educational Psychology
- Speech-Language Pathology & Audiology
- Health Sciences
- Public Health
- Physician Assistant
- Co-operative Education





Additional Membership:

- Minimum of 2 tenured/tenure-track members
- 2 clinical faculty members
- 2 student members of the College
 - 1 undergraduate student
 - 1 graduate student
- Director of Interprofessional Simulation
- 1 administrative representative





iPREP Domains

- Building a sustainable administrative leadership structure
 - Dean, Associate Deans
 - Graduate Student Funding
 - Faculty Development
 - Training
 - External Consultant
 - iPREP Committee
- College-wide
 - Collaborative Conversations
 - Interprofessional Research Symposium





iPREP Domains

- College-wide
 - Collaborative Conversations
 - Interprofessional Research Symposium
 - Dean's Interprofessional Speaker Series





iPREP Domains

- Undergraduate
 - IPE Certificate
 - 1st Year IP Conference on Substance Misuse
 - Living and Learning Community Faculty Dinners
 - Introduction to College Course online module
 - First Year Honors' IP Seminars





iPREP Domains

- Undergrad/Grad

- IP Sim Center
- IP Library Resource Page
- IP course classification instrument
- IP Certificates
 - Aging
 - Chronic Disease Management
 - Substance Abuse Prevention & Treatment
- Crimson Collaborative Clinic

- Graduate

- Joint Degree Programs
- IP Grad Student Group





Interprofessional Healthcare Student Organization



A student led interprofessional committee whose mission and vision aligns with the goals and objectives of Bouve College.

- iPREP Mentorships
- Service learning opportunities
- Experiential learning
- Community service



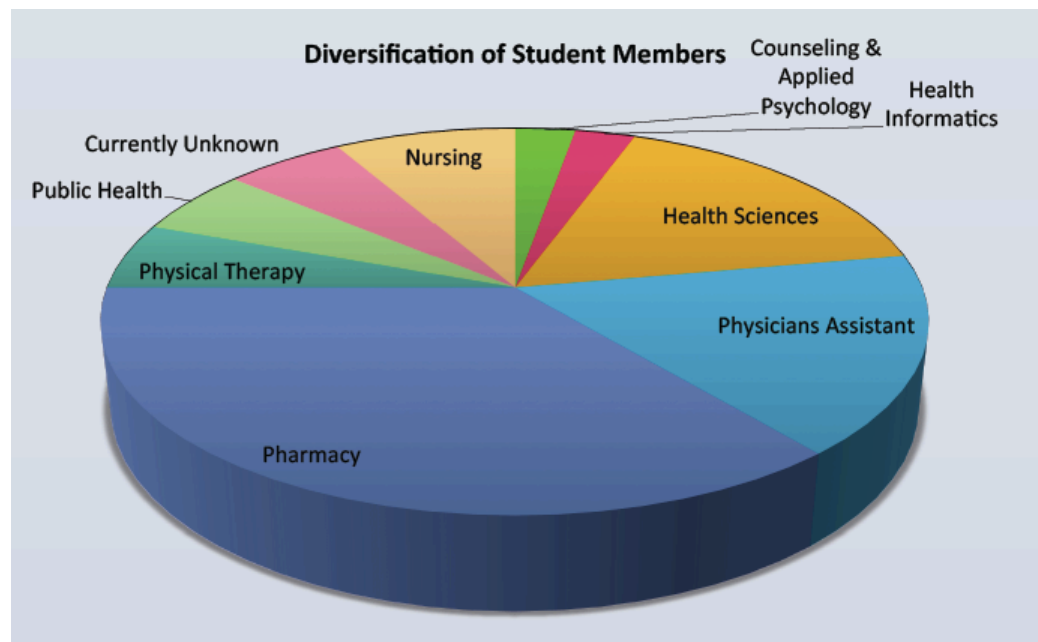
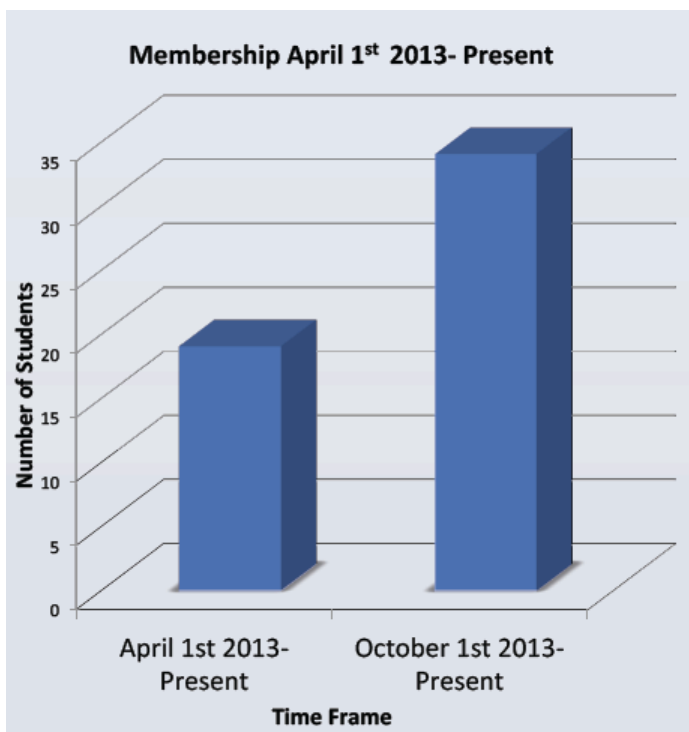
World Oral Health Day
America's Toothfairy Kit



Wampanoag Tribe PowWow



Membership





Northeastern University



Innovations in
Interprofessional Oral Health

ABOUT

LEARN

CONTACT



Engaging Students As Innovation Leaders

Innovations in Interprofessional Oral Health has been established at Northeastern University, Bouvé College of Health Sciences as a resource center to advance innovations in research, education and practice for optimal oral health.

<http://www.northeastern.edu/oralhealth>



About the DentaQuest Foundation

The DentaQuest Foundation is committed to optimal oral health for all Americans through its support of prevention and access to affordable care, and through its partnerships with funders, policymakers and community leaders.

For more information, please visit dentaquestfoundation.org



Conclusion

- The iPREP model is an effective roadmap for advancing interprofessional research, education and practice in health sciences.





Acknowledgements

Terry Fulmer, PhD, RN, FAAN
Dean, Bouvé College of Health Sciences

iPREP Faculty Committee Members

iRISE Student Committee Members



References

¹Berwick, D. M., Nolan, T. W., & Whittington, J. (2008). The triple aim: Care, health, and cost. *Health Affairs*, 27, 759–769.

²Interprofessional Education Collaborative Expert Panel. (2011). *Core competencies for interprofessional collaborative practice: Report of an expert panel*. Washington, DC: Author.

³World Health Organization. (2010). *Framework for action on interprofessional education & collaborative practice*. Geneva, Switzerland: Health Professions Network Nursing and Midwifery Office, Department of Human Resources for Health.



AUTHORS – Contact Information

Maria Dolce, PhD, RN, CNE

Associate Professor, *School of Nursing*

m.dolce@neu.edu

Shan Mohammed, MD, MPH, FAAFP

Clinical Associate Professor, *School of Health Professions*

s.mohammed@neu.edu

Kathryn Robinson, MHA/Ed, BSN

PhD Student, *School of Nursing*

k.robinson@neu.edu