

SUMMARY RESUMES

NEWTON, MA

Weston & Sampson has assembled a collection of professionals with the qualifications and experience needed to provide planning and design services for Levingston Cove at Crystal Lake. To provide comprehensive services, our team includes highly qualified landscape architects, engineers, and environmental professionals licensed in Massachusetts, as well as technical and support specialists, who have successfully worked on similar projects in Massachusetts and throughout New England over the past several years. **The multi-disciplinary nature of our firm allows us to address important project issues efficiently and seamlessly using in-house staff familiar with the unique aspects of open space/recreational requirements.** Our project team allows us to bring expert credentials to every aspect of this project.

Weston & Sampson has the depth of resources to respond to your project needs and can assure the assignment of highly qualified personnel for all your project tasks and deliverables.

Our project management team of **Eugene Bolinger, RLA** as principal-in-charge and **Cassandra Bethoney, RLA** as project manager will have overall responsibility and accountability for project execution. They will manage the performance of our team members, ensure technical quality at each stage of the project, and monitor personnel assignments and allocations to meet project deliverable and schedule milestones.

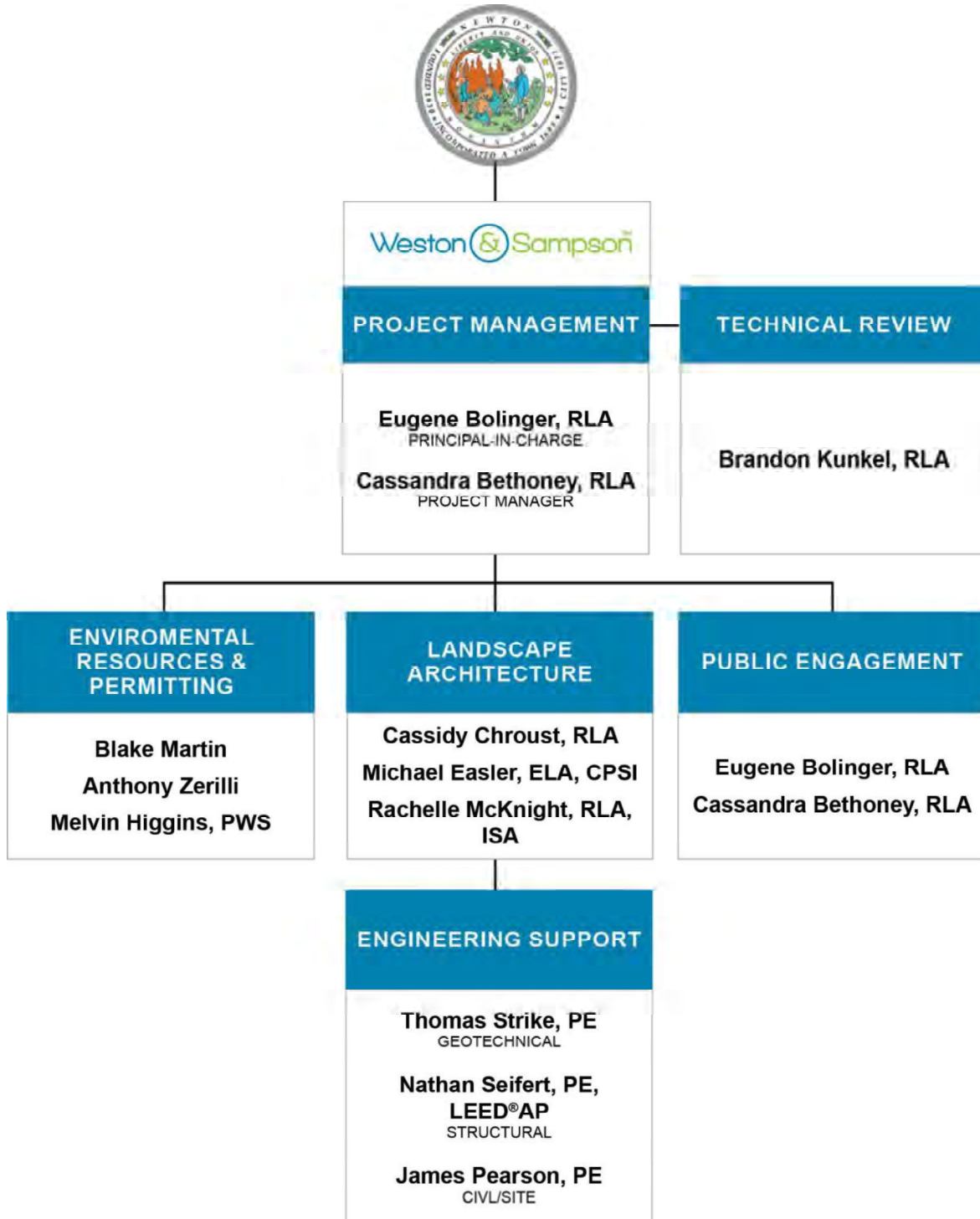


Members of our team recently performing site reconnaissance work at a park and open space property on Boston Harbor.

Upon authorization to proceed, our proposed key team members will be immediately available for work. Weston & Sampson is committed to providing quality services and will perform the scope of work using the appropriate staff levels to meet your required schedule and remain within budget. With more than 650 multi-disciplinary professionals, we are confident that we have the depth of staff and resources to successfully complete all obligations associated with your project. We are committed to fully attending to this project and exceeding your expectations at every turn. We will manage your project from our design studio in Boston, with support from our other offices in Foxboro, Reading, and Worcester, as needed.

On the following page, we provide our project team organization chart that details the lines of communication among all our team members, their respective roles and responsibilities, as well as the estimated commitment of time for each member of the team. All team members on the chart will be made available, as needed, to participate in this planning and design effort. At certain points (a given week for instance) 100% of a team member's time may be allocated to the project. We have included summary biographies of our proposed team following our team chart and professional resumes for our team members at the end of this section.

.....



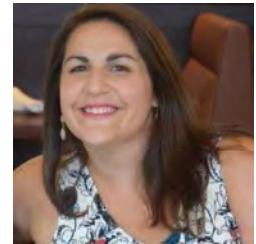
PROJECT MANAGEMENT

Eugene Bolinger, RLA will serve as principal-in-charge of your project and will ensure that your project remains a priority of the firm. Gene is a **Massachusetts Registered Landscape Architect** with 30 years of experience in the planning, design, and implementation of open space and recreational facilities. During his accomplished career, he has successfully managed master planning, final design, and construction administration efforts for multi-disciplinary design/streetscape corridors, park, recreation, and open space projects. Gene has led many of our firm's efforts on programs with significant community input and outreach components, helping multiple stakeholders work together to develop long-term solutions to community planning needs, and brings to this project a successful track record of assisting clients in procuring funding for recreational open space projects through the PARC grant funding program.



In addition, Gene has led efforts related to recreational facilities and neighborhood playground amenities at properties in Boston, Danvers, Falmouth, Framingham, Natick, Newton, Somerville, Waltham, Wilbraham, and Worcester. Gene's recent project experience also includes his work on the highly successful redevelopment of Parcel 5 into Mayor Thomas M. Menino Park in Charlestown, Massachusetts (Received 2016 BSA Accessible Design Award). This project required an accelerated schedule and included ADA accessibility/compliance as well as an extensive public engagement component.

Cassandra Bethoney, RLA is a **Massachusetts Registered Landscape Architect** with experience that spans a broad range of projects from planning to built work, with a focus on public parks and open spaces, streetscape design, and urban improvement projects. Cassie brings to each project strong critical thinking, pragmatism, and a commitment to quality. Cassie worked on the design and development of landscape architecture improvements to John Harvard Mall in Charlestown; a range of improvements to Boston Common and the Public Garden; master planning and conceptual designs for the Kendall Block of Commonwealth Avenue Mall; and planning and design for improvements to Children's Park, Fallon Field Playground, Harambee Park, LoPresti Park, and Menino Park. She also provided support for Weston & Sampson's efforts on the revitalization of Town Hall Plaza in Arlington; development of a strategic plan for Peddocks Island; and improvements to Lincoln Park, Conway Park, and the North Street Veterans Playground in Somerville.



LANDSCAPE ARCHITECTURE

Cassidy Chroust, RLA is a landscape designer with a background that includes master planning, schematic design, design development, construction documentation, and project management. A newly licensed **Registered Landscape Architect**, Cass has successfully managed numerous park/recreation projects, including the Wayland Parks and Open Space Plan, Harambee Park Master Plan (Dorchester), a comprehensive Master Plan for Crompton Park in Worcester, and the Boston Common Master Plan. His Massachusetts experience also includes multiple urban design projects for the Boston Parks and Recreation Department, including our work at the John Harvard Mall and LoPresti Park; for Foss Park master plan and at Lincoln Park in Somerville; for the redevelopment of Riverfront Park in Springfield; for a high school athletic facility design project in Danvers; for Phases 4 and 5 of the Cushing Memorial Park open space improvement project in Framingham; and for the improvements to Institute Park in Worcester.

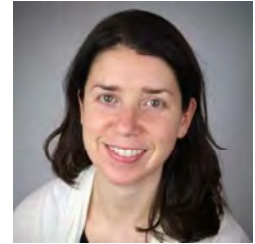


SUMMARY RESUMES

Michael Easler, RLA, CPSI is a landscape architect with specialized skills in 3D modeling and visual representation. He will support the landscape architecture tasks for this project. A **Massachusetts Registered Landscape Architect**, Mike is also experienced in native landscape planting, environmental research, construction detail development, and playground safety systems. His experience includes his current work at Riverfront Park in Springfield, as well as his efforts on the JJ Lane Park improvement project in Natick, and Mayor Thomas M. Menino Park, for which he developed paving designs and colors for the universally accessible playground area, detailed the historic reuse of industrial keel blocks as seating elements, and developed a low-cost construction system and native sedum/grass planting mixes for the proposed bulkhead meadow. Mike's other Massachusetts project experience includes his work for LoPresti Park in Boston with its synthetic turf field; the athletic complex at Danvers Hill School in Danvers; Albion Park, Lincoln Park, the North Street Playground, and at the Quincy Street open space property in Somerville; for Newton Highlands Park in Newton; and for the Warren and Waldstein neighborhood parks in Brookline.



Rachelle McKnight, RLA, ISA is a landscape architect and arborist whose background includes landscape and site design services for a variety of municipal, park, religious institutions, and higher education projects. Her experience includes: parks and recreation master planning, planting design, plaza and public space design, site grading, botanical inventories, trail layout, as well as digital rendering and modeling. Rachelle is proficient in the Adobe Creative Suite, a variety of fine arts, SketchUp, and AutoCAD software. She recently served as Landscape architect/designer responsible for the revitalization of Mill Brook corridor and Wellington Park in Arlington, which included site improvements, vegetation management planning, invasive species removal/control, and bank restoration.



ENVIRONMENTAL RESOURCES & PERMITTING

Blake Martin, Weston & Sampson's environmental resources manager, has over 30 years of specialized experience in water resources and watershed studies. He currently chairs the New England Water Works Association committee on sustainability, focusing on water resource protection and watershed improvements. Recently, Blake's efforts have led to the development of three Water Congresses (2010, 2011, 2012), which brought watershed associations and municipal utility members together to discuss, evaluate, and plan a proactive approach to watershed health. Blake has created innovative GIS approaches to mapping watershed impacts from point/non-point sources. He has managed all our projects for community-wide resource planning and zoning by-law development, including surface water protection plans. His experience includes his watershed and stormwater management work with the Cambridge Water District and close coordination with the Charles River Watershed Association on various water resource protection endeavors.



Anthony Zerilli will lead the environmental permitting services required for your project. Tony is an environmental scientist with more than 10 years of professional experience in the environmental and natural resource management field. He has provided permitting and wetland delineation services at various locations and monitored wetlands and construction sites for impacts caused during project construction for numerous communities throughout Massachusetts. His experience includes park/recreation-related permitting for Massasoit State Park in East Taunton for DCR, Mayor Thomas M. Menino Park, LoPresti Park in East Boston, the Whispering Hill Woods project in Woburn, and various park/recreation improvements in Framingham and Worcester. In addition, Tony is certified in the US Army Corps of Engineers methods of wetlands delineation.



SUMMARY RESUMES

Melvin Higgins, PWS will provide permitting and environmental resource assistance. A **Professional Wetland Scientist** in our Environmental Resources group, Mel has nearly 20 years of environmental permitting, environmental analysis, and water quality experience, including numerous environmental permitting projects for submittal to local conservation commissions and state/federal agencies. His extensive project experience includes his work on Mayor Thomas M. Menino Park in Charlestown, Massachusetts; various park/recreation improvements in Somerville, Waltham, and Worcester; and for the Whispering Hill Woods project in Woburn; and current work providing permitting and environmental resource services at Massasoit State Park in Taunton and at Draw Seven Park in Somerville on behalf of the Massachusetts DCR.



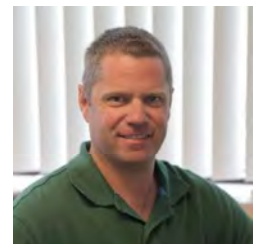
PUBLIC ENGAGEMENT

Our professional staff has extensive experience in conducting public participation and communication programs through our work on numerous projects throughout New England. **Gene Bolinger** and **Cassandra Bethoney** have extensive community outreach and public participation experience. In addition to their other assignments, they will support our community engagement efforts for your design project. We have detailed their qualifications elsewhere within this section.

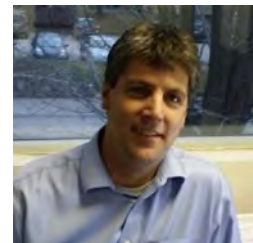
Public participation and engagement is a core component of our expertise and something we take great pride in. Our past design and improvement work at parks, fields, and playgrounds throughout Massachusetts and New England has included many projects with a range of challenges and varying opinions related to specific aspects of a design or improvement. Through careful leadership, everyone can be heard and enrolled into a successful outcome that provides the greatest benefit to the community, its visitors, and the city. No project can be successful without a comprehensive and meaningful public outreach process. To achieve success in this endeavor, an effective design for a revitalized signature park must be authentic in its service to users, visitors, and the surrounding community while honoring its history and its prime location. Our team seeks to establish and maintain valuable communication and cooperation among all those with a vested interest in the project. **To this end, we pledge to work closely with the City of Newton, all project stakeholders, and, of course, residents in an honest, open, and truly productive dialogue that builds trust and promotes the redevelopment of Levingston Cove into a multi-generational recreation amenity that offers spectacular views, access to nature and wildlife, passive recreation, and community gathering spaces.**

ENGINEERING SUPPORT

Thomas Strike, PE is a senior project manager in the firm's environmental and geotechnical program. He has over 20 years of experience with geotechnical engineering design and has been responsible for managing multiple ongoing construction projects. A **Massachusetts registered Professional Engineer**, his specific areas of expertise include foundation design, retaining wall and slope stability analyses, and dam safety engineering.



Nathan Seifert, PE, LEED®AP, a team leader in Weston & Sampson's structural engineering department, has more than 25 years of engineering and construction experience. His areas of expertise include reinforced concrete, masonry, structural steel, and timber design, and he is well versed in the International Building Code. A **Massachusetts registered Professional Engineer**, his project experience includes design for new construction and renovation of commercial, multi-unit residential institutional and pharmaceutical/industrial buildings; water/wastewater treatment facilities; and bridges. Nathan also has construction management experience and is a LEED® Accredited Professional.



SUMMARY RESUMES

James Pearson, PE will also contribute to our environmental resources/permitting efforts. James is a **Massachusetts registered Professional Engineer** with more than 12 years of experience in design, analysis, and construction for a diverse range of projects, including work involving storm drainage conveyance and treatment systems, site planning and design, water distribution systems, sewer pipelines, and structural and roadway design. His skills include computer-aided site/infrastructure design and modeling, hydrology and hydraulic analysis, floodplain modeling, structural modeling, and surveying. James offers specialized expertise in the design of sustainable stormwater management systems. He has designed new and replacement utilities for both urban and suburban settings, and is experienced in the management of design, bidding, and construction administration project phases.



TECHNICAL REVIEW

Weston & Sampson is committed to quality assurance and control. To assure that our firm's high standards are maintained, we routinely assign senior staff members to review the project team's work at regular intervals. This quality review is an important element of our approach to provide clear, biddable documents and avoid change orders during construction.

Brandon Kunkel, RLA is a **Massachusetts Registered Landscape Architect** with more than 10 years of experience in innovative design and master planning. Brandon's areas of expertise include parks, high-density mixed-use developments, academic and corporate campuses, and natural resource conservation and rehabilitation. Brandon is currently responsible for the construction administration phase of the new high school athletic facility in the Town of Danvers. Brandon's experience also includes work on the design services for the development of Weir Riverfront Park in the City of Taunton; the design of improvements to LoPresti Park in East Boston, including the artificial turf soccer field; an athletic fields project at the University of Massachusetts Lowell; redevelopment of Riverfront Park in Springfield; Lincoln Park in Somerville; development of a master plan for the 80-acre Merrymount Park in Quincy; and planning/design for the Charles River parklands restoration in Boston.

