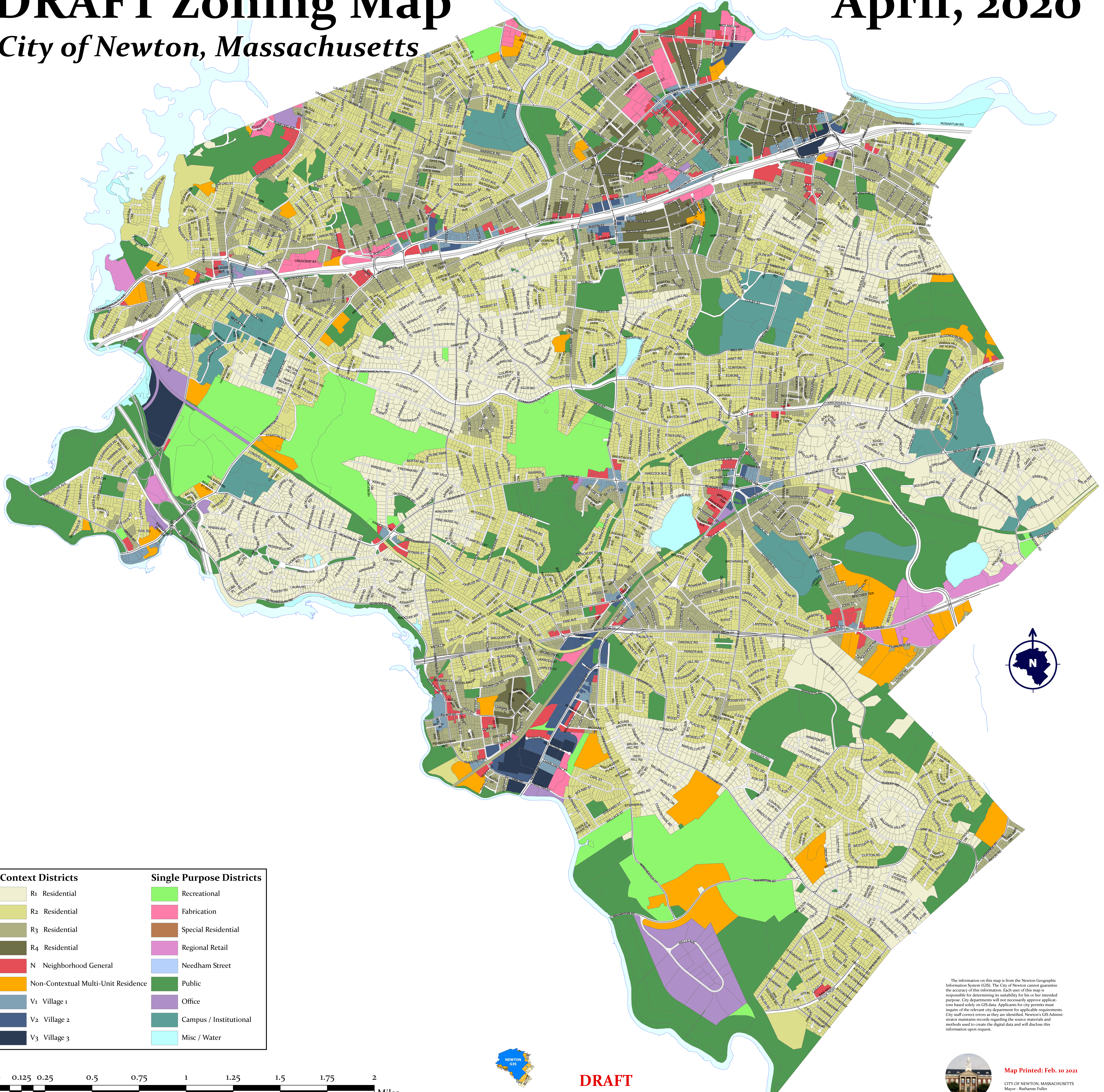


DRAFT Zoning Map

City of Newton, Massachusetts

April, 2020



Context Districts	Single Purpose Districts
R1 Residential	Recreational
R2 Residential	Fabrication
R3 Residential	Special Residential
R4 Residential	Regional Retail
N Neighborhood General	Needham Street
Non-Contextual Multi-Unit Residence	Public
V1 Village 1	Office
V2 Village 2	Campus / Institutional
V3 Village 3	Misc / Water



DRAFT

The information on this map is from the Newton Geographic Information System (GIS). The City of Newton cannot guarantee the accuracy of this information. Each user of this map is responsible for determining its suitability for his or her intended purpose. City departments will not necessarily approve applications based solely on GIS data. Applicants for city permits must inquire of the relevant city department for applicable requirements. City staff correct errors as they are identified. Newton's GIS Administrator maintains records regarding the source materials and methods used to create the digital data and will disclose this information upon request.



Map Printed: Feb. 10 2021
CITY OF NEWTON, MASSACHUSETTS
Mayor - Ruthanne Fuller