

Garages for an Age-Friendly Newton: Integral accessibility, not an afterthought

#88-20



Deb Pierce, AIA
26 October 2020



Pierce Lamb Architects, West Newton
Homeowner, West Newton

Plan for varied disabilities



- Mobility
- Dexterity
- Vision
- Hearing
- Cognitive
- Cardio-Pulmonary



Typical Newton site hazards



- Trip-hazards in path of travel
- Unsafe stairs
- Wide curb-cuts
- Uncovered parking
- Cracked uneven paving





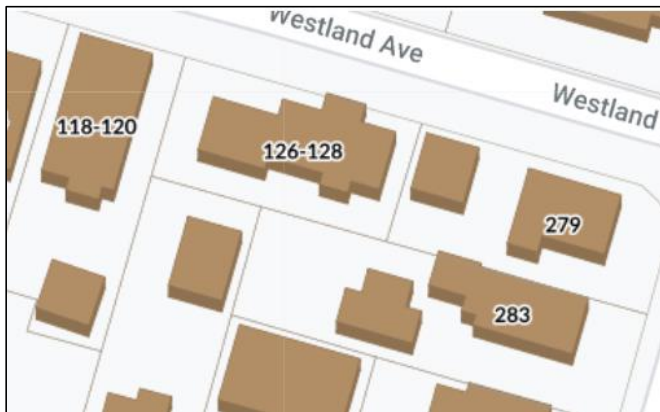
Elements of an age-friendly site

- Bed/bath/laundry on first floor^{#88-20}
- Attached garage with ramp/lift
- Short paths of travel
- Generous parking and loading
- Zero-step entry
- Paved gently-sloped pathways
- Covered landings



#88-20

Front-setback garages on Shallow sites



126-128 Westland Ave, West Newton

Irregular-shaped sites

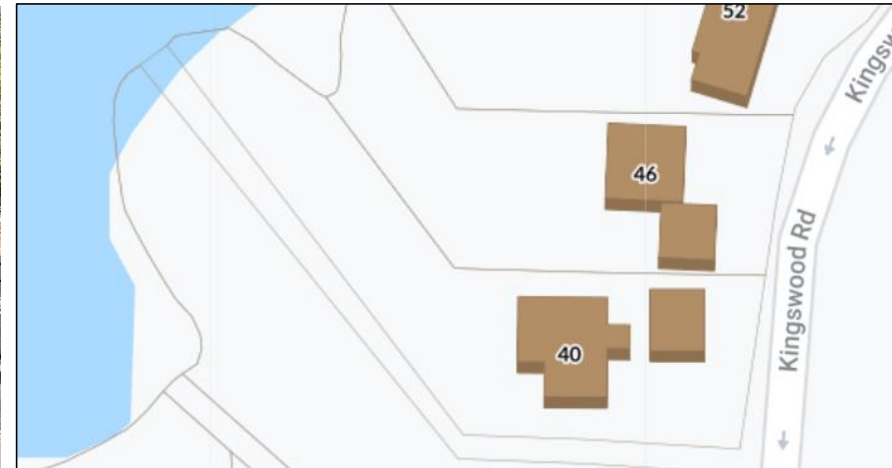
Minimum frontage.
Irregular site shape.
Depth = min. 2x frontage.

334-336 Linwood Ave, Newtonville



Narrow sites

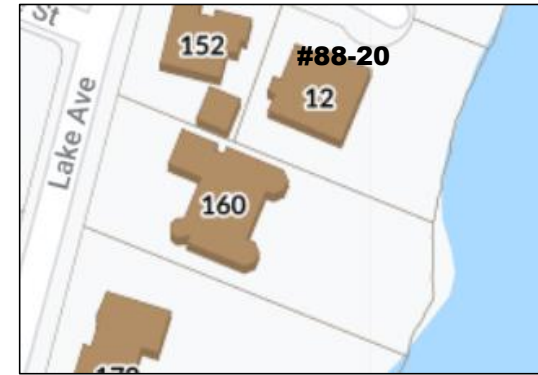
#88-20



- Narrow lot.
- Wetlands.
- Preserve views of natural features.
- Flat grades only at street.

40 Kingswood Rd., Auburndale

Abutting wetlands or natural features



Front-facing garage plus circular drive keep vehicular land-use at streetside, where it belongs, prevent cars from backing up into the street, and leave back yard for landscape and pedestrian use. Here, it also protects Lake water from possible contamination by oil/gas.

16- Lake Ave, Newton Center



#88-20

With narrow curb-cuts, generous turning space



Adequate onsite turning space
No backing out into traffic
Provide landscape screening

*3-car garage (staggered front wall)
305 Cherry Street, West Newton*

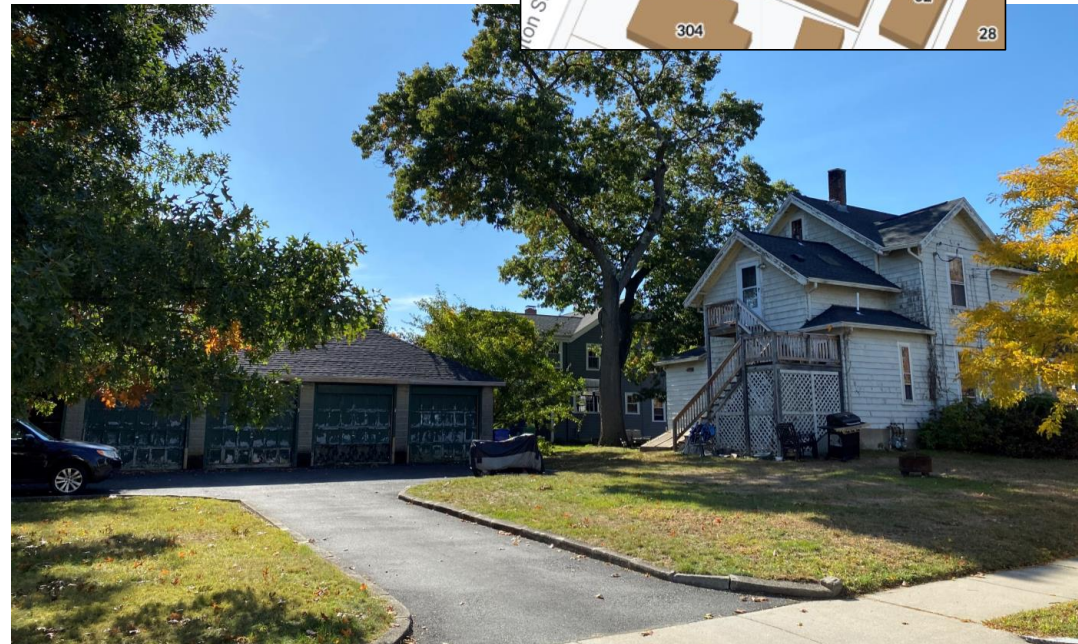
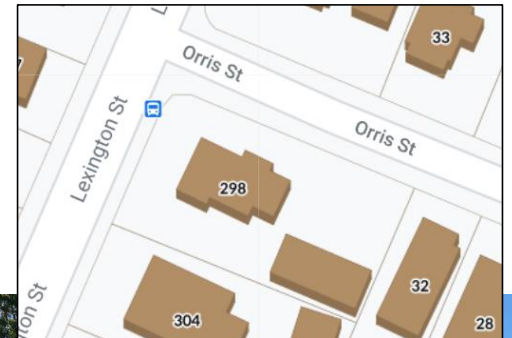


Allow 4-car+ garages with deep setbacks



*Meet dimensional controls
Single-width curb cuts
On-site turnaround space*

*Left: 261 Melrose St, Auburndale
Right: 298 Lexington Street, Auburndale*



Exempt covered un-enclosed parking

- Low-cost amenity
- Reduced site mass
- Maintain & frame views
- Accentuate/reflect house architecture

*West Newton, Newton Center,
and Newtonville*

