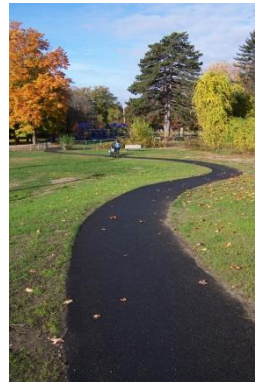


City of Newton Department of Planning and Development

1

FY16-FY20 CONSOLIDATED PLAN and FY16 ANNUAL ACTION PLAN April 13, 2015



Introductions

2

Eve Tapper, Acting Associate Director, Planning and
Development Department

Judith Menon, Community Development Programs Manager

Lydia Scott, Community Development Planner

Danielle Bailey, Grants Manager

Alice Walkup*

Rieko Hayashi*

Robert Muollo*

* Former staff members

Overview: FY16-20 Consolidated Plan Process

3



Federal Grants

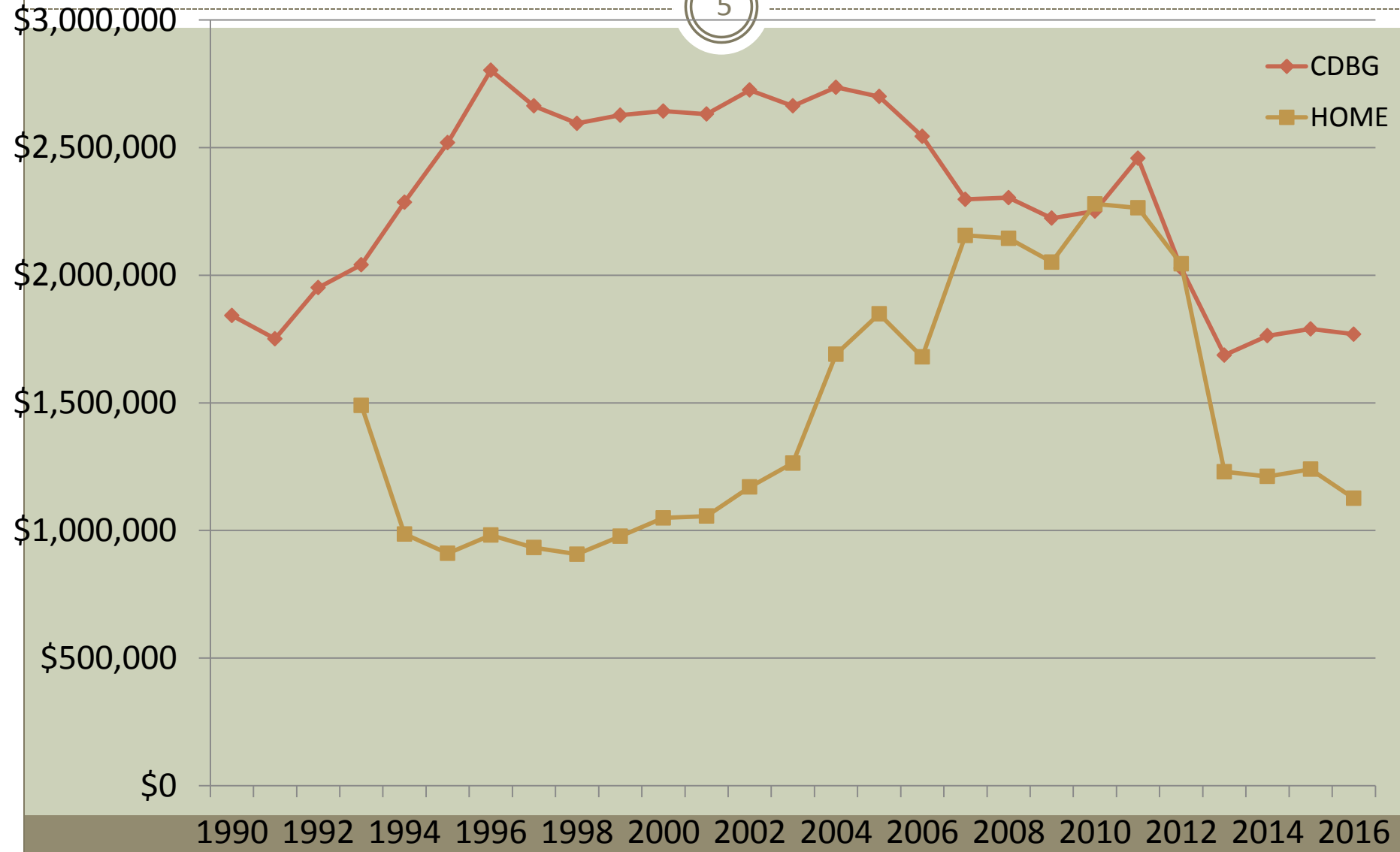
4

Community Development Block Grant (CDBG)

- **All projects/activities** funded in Newton with this grant **must** be targeted towards assistance to low- and moderate-income residents
- The program's goal is to develop viable urban communities through
 - Decent housing (affordable, accessible housing)
 - Suitable living environment (infrastructure improvements)
 - Expanded economic opportunities (job training/creation)

Funding Levels Over Time

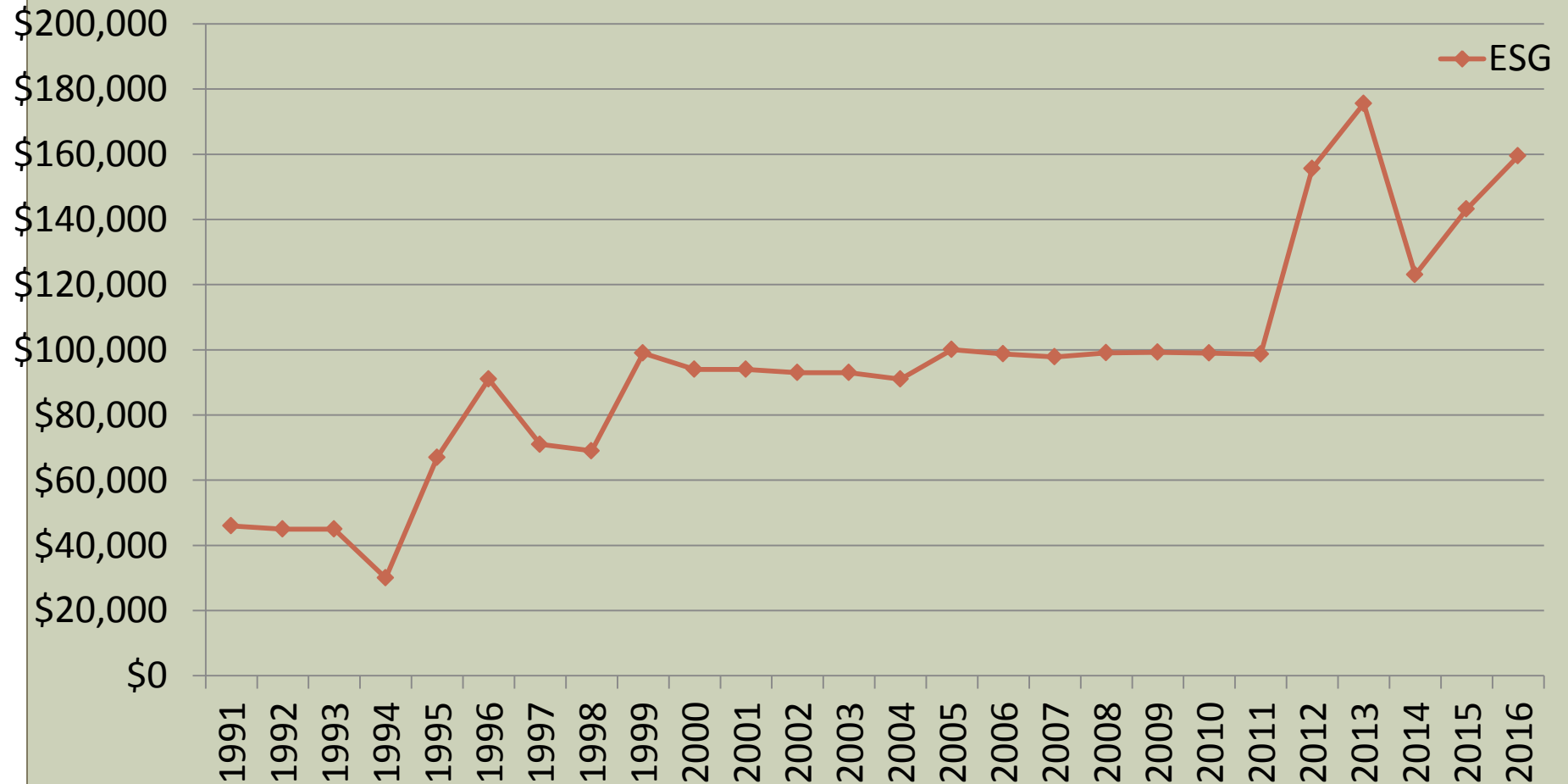
5



Funding Levels Over Time

6

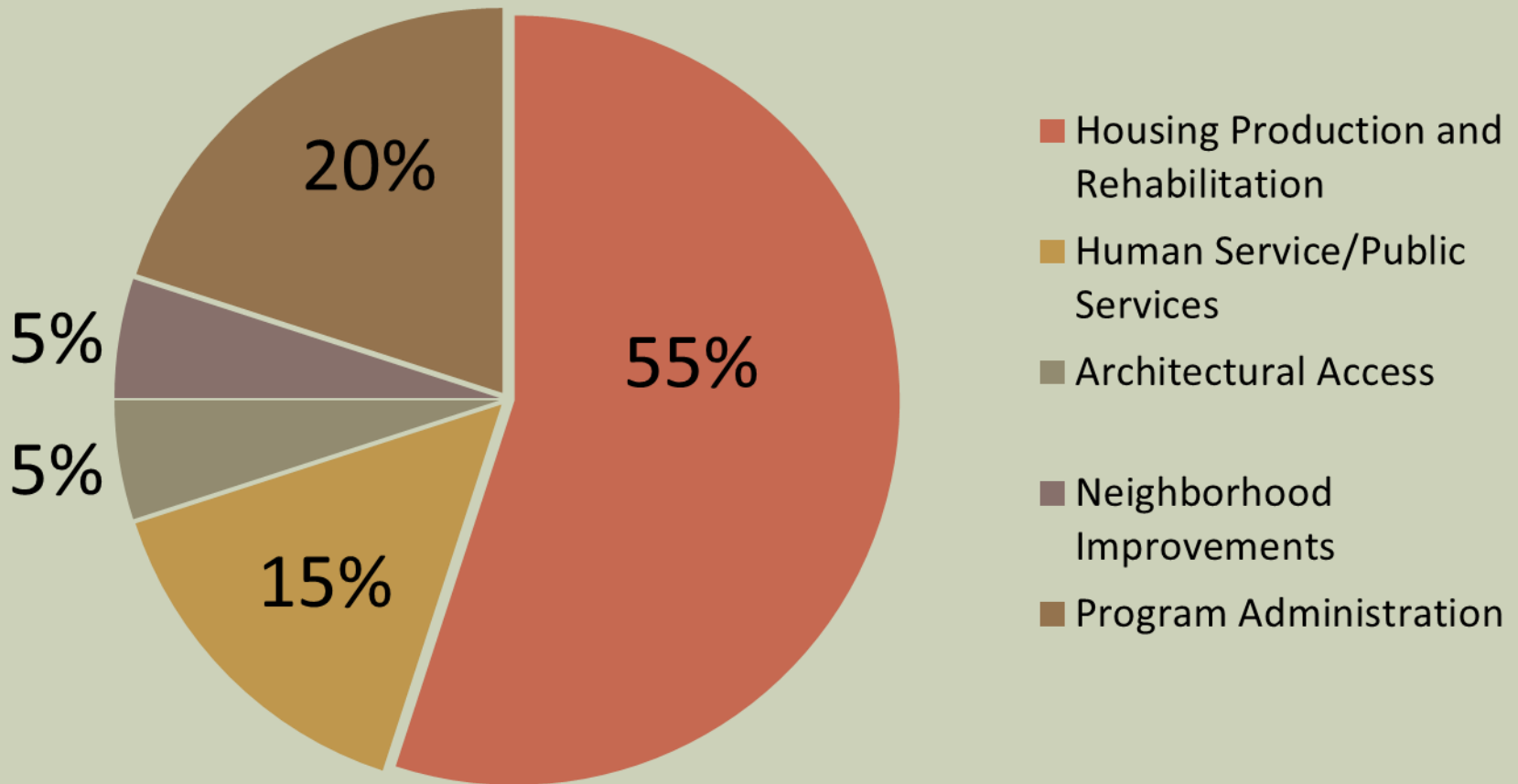
ESG Allocations



Recommended CDBG Allocations, FY16-20

7

Proposed Allocations



Overview: Process

8

- Kickoff meeting in November 2013, in the 17 months since then...
- More than 15 public meetings to determine community needs and strategies to meet those needs
- Additional outreach: focus groups, Village Day etc.
- 27 meetings and discussions at Advisory Committees and Planning and Development Board
- Over 300 participants at public meetings
- 145 surveys returned, 25% from LMI individuals
- Nearly 700 hits on the Con Plan website

FY16-20 Priority Needs

9

- **Economic Development**
 - Job Training
 - Job creation and placement assistance
- **Human Service/Public Services**
 - Children, Teens, Families
 - Older Adults
 - Persons with Disabilities
- **Infrastructure Improvements**
 - Accessible curb cuts
 - Traffic calming
 - Parks and Open Space
- **Housing**
 - More affordable units to meet goal of 10% of housing stock by 2021
 - Housing Strategy
 - Flexible funding source
 - Permanent supportive housing for chronically homeless individuals with disabilities

Key Questions

11

- Overall affordable housing need
 - ✦ How do we do more with less?
- Leverage Federal Funding
 - ✦ Newton's Existing Affordable Housing Tools:
 - Community Development Block Grant (CDBG) – Federal
 - HOME Investment Partnership (HOME) – Federal
 - Community Preservation Act (CPA) – Local/State
 - Inclusionary Housing Funds – Local
 - Inclusionary Housing Ordinance – Local

Key Questions

12

- Needs of Low- and Moderate-Income population
 - ✦ Based on need, who should this housing serve?
- Target Populations
 - ✦ Low income households ($\leq 50\%$ AMI)
 - ✦ Moderate Income households ($\leq 80\%$ AMI)
 - ✦ Middle-income households (80 – 120% AMI)
 - ✦ Homeless families
 - ✦ Older adults
 - ✦ People with disabilities

Housing Goal

13

- By 2021, ten percent (10%) of City's housing stock will be eligible for inclusion on the State's Subsidized Housing Inventory
 - Approximately 800 net new units needed



Continue Existing Housing Strategies

14

- Majority of FY11-15 housing strategies will be carried over into FY16-20 Con Plan:
 - ✦ Investments to increase supply for very-low income households
 - ✦ Create affordable housing development programs
 - ✦ Reduce regulatory and financial barriers
 - ✦ Continue fair housing compliance and education efforts

- Programs to be recapitalized:
 - ✦ First Time Homebuyer Program
 - ✦ Housing Rehabilitation Program
 - ✦ Tenant-based Rental Assistance Program (if FY16 pilot successful)

FY16 Proposed Actions

15

- City-wide housing strategy
 - Strategies to achieve the 10% housing goal
 - Identify site(s) for 9-12 units of permanent supportive housing for chronically homeless individuals
- Rehabilitate 7 homeowner units / focus on accessory apts.
- Rolling applications for development projects
- Assist up to 3 first-time homebuyers (CPA funding)
- Tenant-based rental assistance voucher
- Inclusionary Housing Funding Program Guidelines
- Re-initiate Affordable Housing Trust discussions

FY16 Human Service Grant Program

17

- Human Service category capped at 15% of annual allocation
 - ✦ \$276,720 in FY16 (16% decrease from FY15)

- FY16 Human Service Grant application process
 - ✦ RFP issued in December 2014
 - ✦ 25 Applications received in January 2015
 - ✦ HSAC met in February 2015

- Evaluation Criteria
 - ✦ Priority Human Service needs in Newton
 - ✦ Scoring sheet
 - ✦ Previous outcomes and results

Benchmarks for Success from the Social Genome Model

18



Early childhood

Acceptable
pre-reading and
math skills
AND
Behavior generally
school-appropriate



Middle childhood

Basic reading and
math skills
AND
Social-emotional
skills



Adolescence

Graduates from high
school w/GPA \geq 2.5
AND
Has not been
convicted of a crime
nor become a parent



Transition to adulthood

Lives independently
AND
Receives a
college degree or has
a family income
 \geq 250% of the
poverty level



Adulthood

Reaches middle class
(family income at
least 300% of the
poverty level)

FY16 Human Service Grant Program

19

- **FY16 Human Service Sub-Grantees**
 - ✦ Planning Board recommended funding for 15 different organizations in support of 20 programs

- **Transition to one-year grants from five-year grants**
 - ✦ Changes to the RFP process allow for more flexibility & accountability
 - ✦ Emphasize program outcomes

Additional Human Service Strategies

20

Priority Needs	Strategies
Ability to age in place	<p>Market rehab program to income-eligible homeowners to assist with bringing illegal & pre-existing accessory apartments up to code</p> <ul style="list-style-type: none">• Recent change in ordinance to legalize accessory apartments that existed before 1999 (from 1979) <p>Support human service programs that target older adults and adults with disabilities to allow them to age in place</p>

Updates for Neighborhood Improvements & Access

22

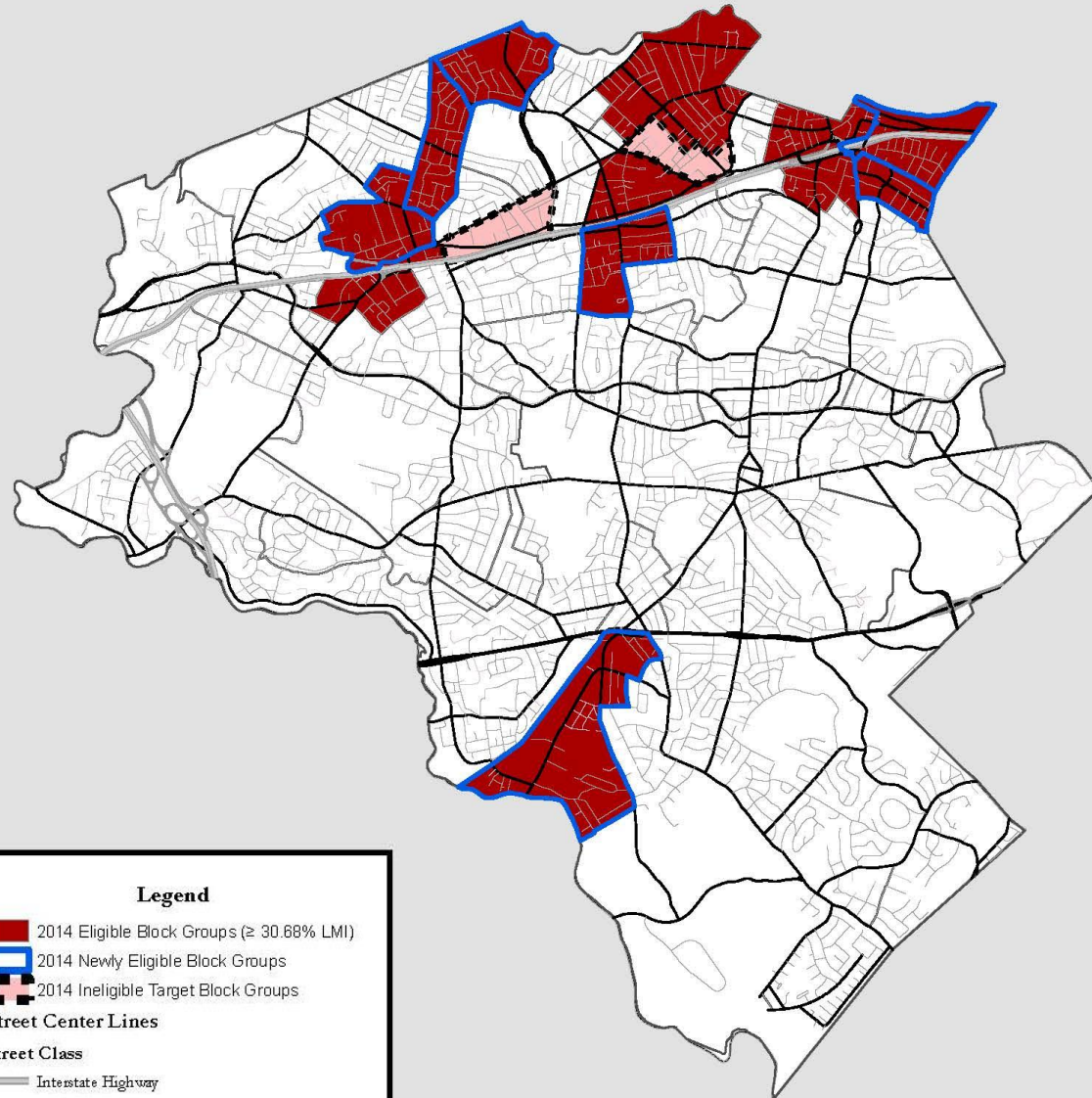
- Addition of new Target Neighborhood in Upper Falls
 - ✦ Based on updated income data released by HUD in July 2014
- Transition to five-year allocation cycle for neighborhoods
 - ✦ Allocation of \$88,431 for FY16

Fiscal Year	Target Neighborhood
2016	Upper Falls
2017	West Newton
2018	Newton Corner
2019	Nonantum
2020	Newtonville

- Commission on Disability will serve as advisory body for accessibility projects
 - ✦ Allocation of \$88,431

2014 HUD
LMI Block
Group
Eligibility

#426-13



Legend

- 2014 Eligible Block Groups ($\geq 30.68\%$ LMI)
- 2014 Newly Eligible Block Groups
- 2014 Ineligible Target Block Groups

Street Center Lines

Street Class

- Interstate Highway
- Major Artery
- Local Road
- Private Street
- Highway Ramp

NEXT STEPS

Long-Term Timeline

25

Fall 2013	FY16-20 Consolidated Plan Kick-off
Winter 2013	Needs Assessment – Data Collection
Spring 2014	Needs Assessment – Public Meetings & Input
Fall 2014	Needs Prioritization
Winter 2014	Formulate objectives & strategies
Jan. 22 nd & 29 th	Strategies – Public Meetings & Input
February 10 th	P&D Board review of Strategic Plan chapter
March 2 nd	P&D Board public hearing on Con. Plan and AAP
April 13th	Board of Alderman grant review/acceptance; Mayoral approval
May 15 th , 2015	HUD submission

Newton Community Development Block Grant Program - FY16 Budget

#426-13

PROJECT #	PROJECTS	Letter-of-Credit (LOC) Budget	FY16 Program Income (Estimated)	Prior Year(s) Program Income (FY15)	Total Budget
HOUSING PROGRAM					
CD16-01A	Housing Program Delivery	\$390,000.00			\$390,000.00
CD16-01B	Housing Rehabilitation and Development Program Fund	\$582,741.00			\$582,741.00
CD16-01C	Housing Program Rehab Revolving Loan Fund (estimated rehab loan repayment)	\$0.00	\$81,250.00		\$81,250.00
HOUSING PROGRAM TOTAL		\$972,741.00	\$81,250.00	\$0.00	\$1,053,991.00
ECONOMIC DEVELOPMENT					
no proposed projects					
ECONOMIC DEVELOPMENT TOTAL		\$0.00	\$0.00	\$0.00	\$0.00
HUMAN SERVICES					
CD16-05E	Boys and Girls Club/Summer Camp Financial Aid	\$5,500			\$5,500.00
CD16-05G	Boys and Girls Club/Teen Programming	\$7,000			\$7,000.00
CD16-05I	Charles River ARC/Stipends for Newton LMI Families	\$3,000			\$3,000.00
CD16-05K	Jewish Community Housing for the Elderly/Caring Choices	\$10,000			\$10,000.00
CD16-05M	Newton Partnership/Child Care Scholarship Fund	\$15,000			\$15,000.00
CD16-05Q	Newton Community Development Foundation/Resident Services Program	\$22,000			\$22,000.00
CD16-05S	Family ACCESS of Newton/Early Learning Center Scholarship Fund	\$25,000			\$25,000.00
CD16-05V	Family ACCESS of Newton/Early Literacy Services and School Readiness Program	\$5,000			\$5,000.00
CD16-05X	Family ACCESS of Newton/Counseling and Consultation Services	\$24,000			\$24,000.00
CD16-05R	Newton Senior Services Department/Senior Center Program Coordinator	\$16,250			\$16,250.00
CD16-05Y	Newton Senior Services Department/Social Services Case Management	\$23,250			\$23,250.00
CD16-054	Newton HHS Department/Riverside Youth Outreach Program	\$15,000			\$15,000.00
CD16-058	NWW Committee/Wednesday Night Drop-In	\$7,100			\$7,100.00
CD16-05BB	REACH/Individual Support and Advocacy	\$5,000			\$5,000.00
CD16-05CC	Riverside Community Care/Family Crisis Stabilization	\$5,500			\$5,500.00
CD16-05DD	Riverside Community Care/Mental Health and Substance Abuse Recovery	\$17,620			\$17,620.00
CD16-05LL	Horace Cousens Industrial Fund/Payment of Rent and Utility Bills	\$10,000			\$10,000.00
CD16-05OO	The Second Step/Residential and Community Programs	\$10,000			\$10,000.00
CD16-05PP	Jewish Family & Childrens Services/Stabilization and Recovery Service	\$17,500			\$17,500.00
CD16-05MM	West Suburban YMCA/The Teen Center	\$21,573		\$ 11,427.00	\$33,000.00
CD16-05A	Human Service Program Delivery			\$ 2,573.00	\$2,573.00
CD16-98D	Human Service Program Income Reserve (for FY17 projects- do not include in FY16 budget totals)		\$18,750.00		
HUMAN SERVICES TOTAL (Cannot exceed 15% of current year LOC + 15% of prior year program income)		\$265,293.00	\$18,750.00	\$14,000.00	\$279,293.00
NEIGHBORHOOD IMPROVEMENTS & ACCESS (will be separate)					
CD16-07A	Neighborhood Improvements & Access Funding Pools (projects TBD)	\$176,862.00			\$176,862.00
NEIGHBORHOOD IMPROVEMENTS & ACCESS TOTAL (will be separate)		\$176,862.00	\$0.00	\$0.00	\$176,862.00
PROGRAM ADMINISTRATION					
CD16-09A	Program Administration	\$352,724.00	\$25,000.00		\$377,724.00
CD16-09B	Citizen Participation	\$1,000.00			\$1,000.00
CD16-99	Contingencies	\$0.00			
PROGRAM ADMINISTRATION TOTAL (Cannot exceed 20% of current year LOC + 20% of current year program income)		\$353,724.00	\$25,000.00	\$0.00	\$378,724.00
GRAND TOTAL ALL PROGRAM AREAS		\$1,768,620.00	\$125,000.00	\$14,000.00	\$1,888,870.00
FY15 CDBG Letter of Credit Funds from HUD B-15-MC-25-0019		\$1,768,620.00			

* FY16 CDBG is a 1.17% decrease from FY15 (\$1,789,510)

Suggested FY16 ESG Allocation

Approved by CoC by unanimous vote on 3/10/15

	Allocation	Shelter Services	Street Outreach	Homelessness Prevention	Rapid Re-Housing	HMIS	Administration
FY16	\$159,511	\$63,804	\$11,166	\$44,663	\$26,319	\$1,595	\$11,963
FY15	\$143,202	\$63,674	\$10,000	\$44,144	\$14,644	\$0	\$10,740
Diff:	\$16,309	\$130	\$1,166	\$519	\$11,675	\$1,595	\$1,223
FY14	\$123,041	\$73,780	\$0	\$0	\$0	\$40,033	\$9,228
FY13	\$175,586	\$85,000	\$0	\$94,694	\$31,565	\$7,182	\$13,169