

Career Services
Survey of Recent Graduates
Class of 2003

Prepared by the
Office of University Planning and Research
for the
Department of Career Services

October, 2004

Table of Contents

Table 1: Disposition of the Sample, Class of 2003	2
Table 2: Sample Sizes, Classes of 1999-2003.....	2

Employment Summary

Chart 1: Labor Force Status Nine to Twelve Months after Graduation	3
Table 3: Labor Force Measures Nine to Twelve Months after Graduation	3
Chart 2: Length of Time between Graduation and Full-Time Employment	4
Chart 3: Current Job with Former Coop Employer?	4
Chart 4: Inflation-Adjusted Annual Salary, Distribution	5
Chart 5: Inflation-Adjusted Annual Salary, Mean and Median	5
Chart 6: Relationships between Job and Position Requirements, Major, and Long-Term Career Plans	6
Chart 7: Rating of How Much Coursework Enhanced Ability to Do Job.....	6
Chart 8: Rating of How Much Coursework and Coop Experience Enhanced Ability to Do Job.....	7
Chart 9: Methods Used in Job Search	7

Career Preparation

Table 4: Responses to Items Concerning Career Preparation, Class of 2003	8
--	---

Graduate School Enrollment

Table 5: Enrollment in Graduate School, Classes of 1999-2003	9
Table 6: Institutions Selected for Graduate Study, Class of 2003.....	10
Table 7: Majors Pursued in Graduate School, Class of 2003.....	11

Responses Concerning Coop

Chart 10: Rating the Benefits of Coop	12
Chart 11: Single Most Important Benefit of Coop?	12
Chart 12: Better Prepared for your Post-Graduation Job in Comparison to Other College Graduates who Had Not Participated in Coop?.....	13
Chart 13: Did Coop Experience have a Positive Impact on your Starting Salary?	13
Table 8: Questions Concerning Coop and Academic Learning	14
Table 9: Characterization of Overall Satisfaction with Coop Experiences	14
Chart 14: Would you recommend a Coop Based Education to a Friend Who was Making Plans to Attend College?	14

Survey Findings by College/Major

Table 10: Distribution of Graduates, by College/Major	16
Table 11: Employment Status by College and Major	17
Table 12: Graduate Enrollment Status by Undergraduate College and Major.....	18
Chart 15: Positive Outcome Rate (Either Employed or Enrolled), by College.....	19
Chart 16: Full-Time Positive Outcome Rate (Either Employed Full-Time or Enrolled Full-Time), by College, Class of 2003.....	19
Table 13: Annual Salary of Full-Time Employed Graduates, Class of 2003.....	20
Table 14: Median Inflation-Adjusted Annual Salary of Full-Time Employed Graduates, Classes of 1999-2003	21
Table 15: Employers and Job Titles of Full-Time Employed Graduates	22
Survey Instrument.....	33

This report presents findings from the annual *Survey of Recent Graduates* conducted by the Office of University Planning & Research for the Department of Career Services. In prior years, the survey was conducted via paper mail and telephone surveys. This year, an attempt was made to conduct the survey online with the *ESurveyor* tool. In late April of 2004, e-mail invitations directing students to a website containing the survey were sent to 1,367 June 2003 graduates for whom we had an e-mail address. A reminder e-mail was sent approximately two weeks later. For graduates who did not respond via the web, paper mail surveys were sent out in the middle of May. In an effort to increase response rates, web and mail respondents who provided a raffle number given to them in a cover letter were entered into a raffle to win one of ten \$100 Amazon.com gift certificates.

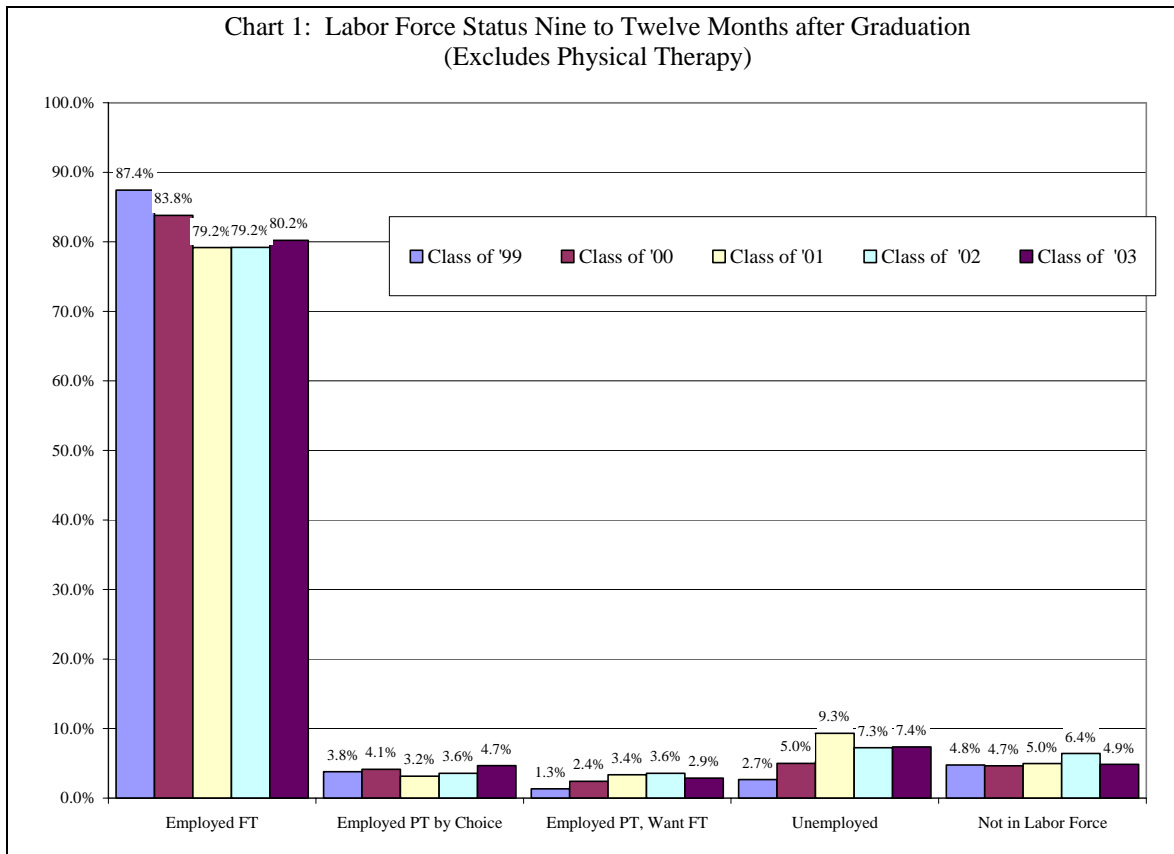
There were 2,089 Northeastern students who graduated with baccalaureate degrees in June 2003. A total of 380 graduates responded to the survey via the web, and an additional 202 graduates returned mail surveys. Taken together, the web and mail surveys collected information from 583 graduates, or 28 percent of the graduates.

	Universe		Respondents				Response
	<u>Number</u>	<u>% of Total</u>	<u>Web</u>	<u>Mail</u>	<u>Total</u>	<u>% of Total</u>	<u>Rate</u>
Arts & Sciences	771	37%	119	78	197	34%	26%
Bouve	193	9%	29	37	66	11%	34%
Business	616	29%	116	48	164	28%	27%
Computer Science	62	3%	14	5	19	3%	31%
Criminal Justice	154	7%	33	15	48	8%	31%
Engineering	212	10%	50	18	68	12%	32%
Engineering Tech.	81	4%	19	2	21	4%	26%
Total	2,089	100%	380	202	583	100%	28%

In much of this report, survey findings for the most recent cohort of graduates are compared to findings from past surveys. The sample sizes for these surveys are given in Table 2.

	Class of <u>1999</u>	Class of <u>2000</u>	Class of <u>2001</u>	Class of <u>2002</u>	Class of <u>2003</u>
Arts & Sciences	160	186	178	269	197
Bouve	132	132	93	121	66
Business	108	144	138	194	164
Computer Sciece	16	11	17	17	19
Criminal Justice	65	72	50	64	48
Engineering	73	72	57	78	68
Engineering Tech.	20	15	11	24	21
Unknown	0	0	1	0	0
Total	574	632	545	767	582

Employment Summary



**Table 3: Labor Force Measures Nine to Twelve Months after Graduation
(Excludes Physical Therapy)**

	Class of <u>1999</u>	Class of <u>2000</u>	Class of <u>2001</u>	Class of <u>2002</u>	Class of <u>2003</u>
Labor Force Participation Rate	95.2%	95.3%	95.0%	93.6%	95.1%
Full-Time Employment Rate	87.4%	83.8%	79.2%	79.2%	80.2%
Employment Rate	92.6%	90.3%	85.7%	86.3%	87.8%
Unemployment Rate	2.8%	5.2%	9.8%	7.8%	7.8%

Note: Physical Therapy has been excluded since the terminal degree in that program is now a six-year degree.

Chart 2: Length of Time between Graduation and Full-Time Employment (Full-Time Only)

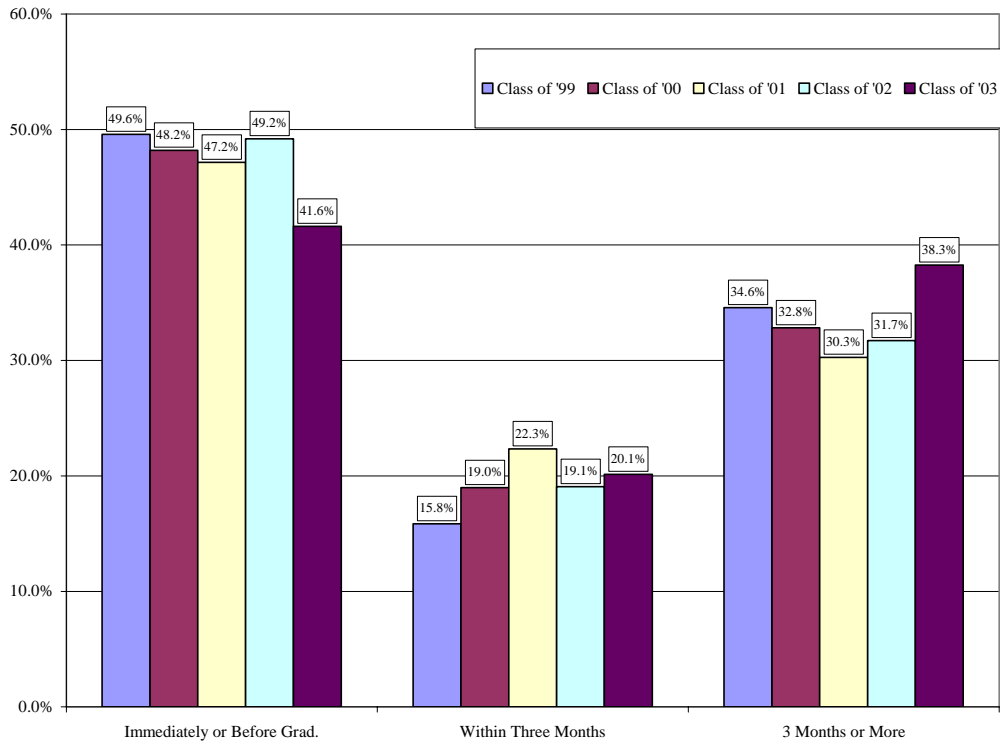


Chart 3: Current Job with Former Coop Employer? (Full-Time Only)

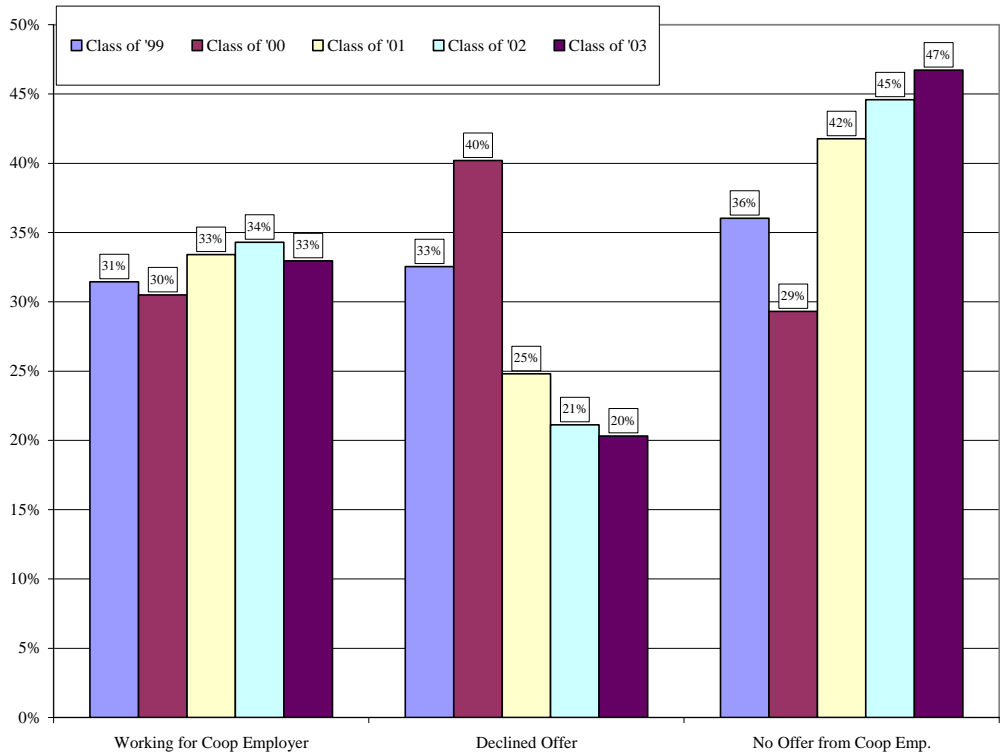


Chart 4: Inflation-Adjusted Annual Salary, Distribution (Full-Time Only, in April 2004 Dollars)

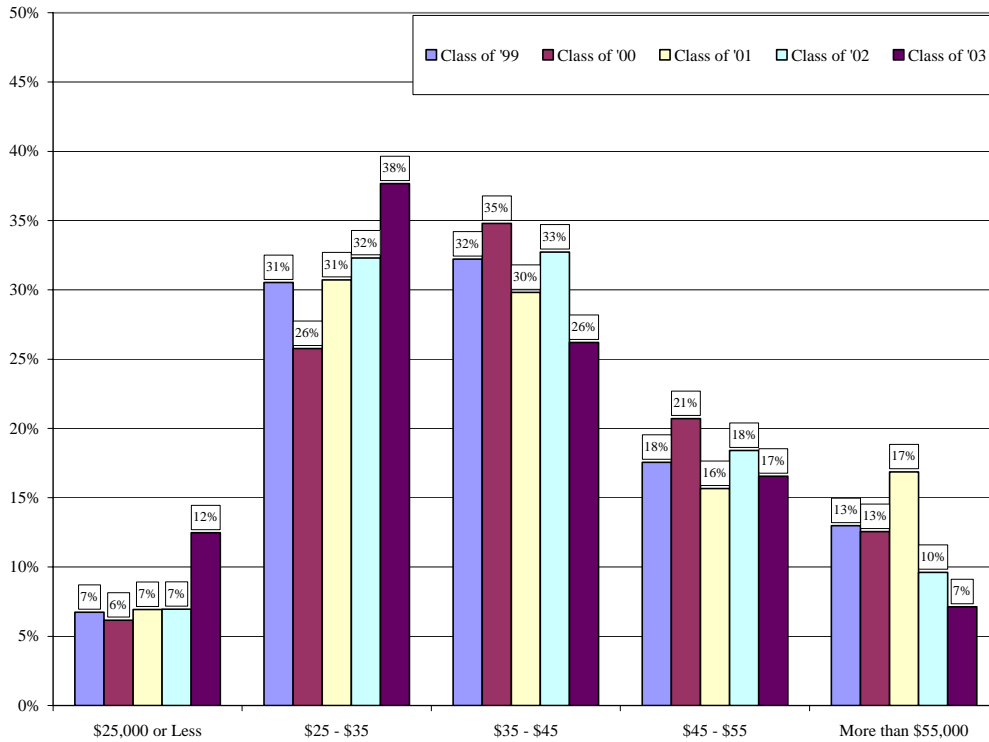


Chart 5: Inflation-Adjusted Annual Salary, Mean and Median (Full-Time Only, in April 2004 Dollars)

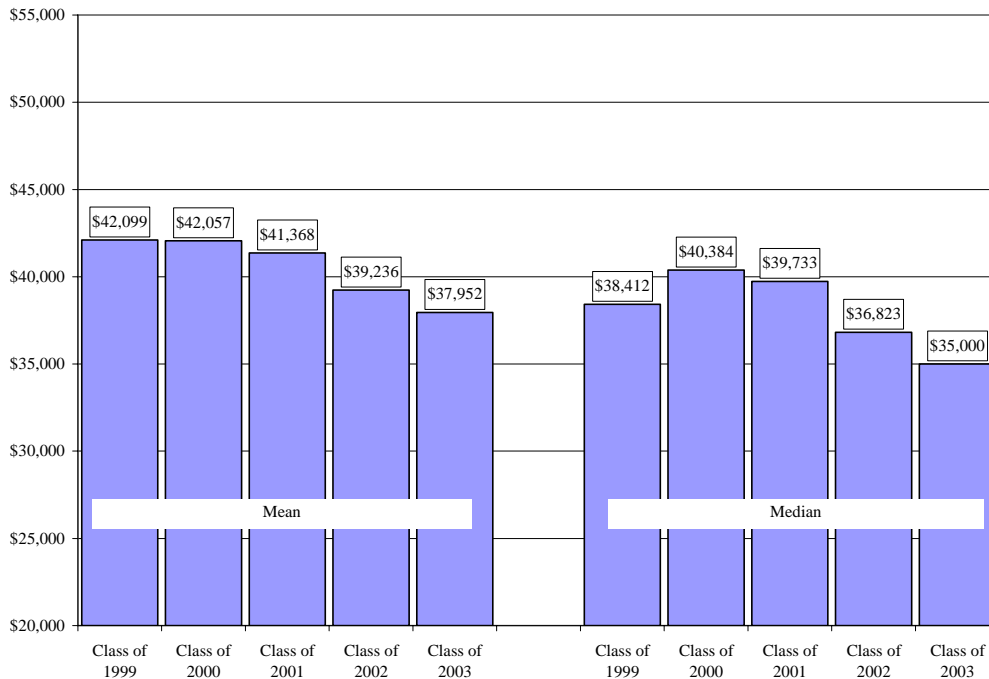
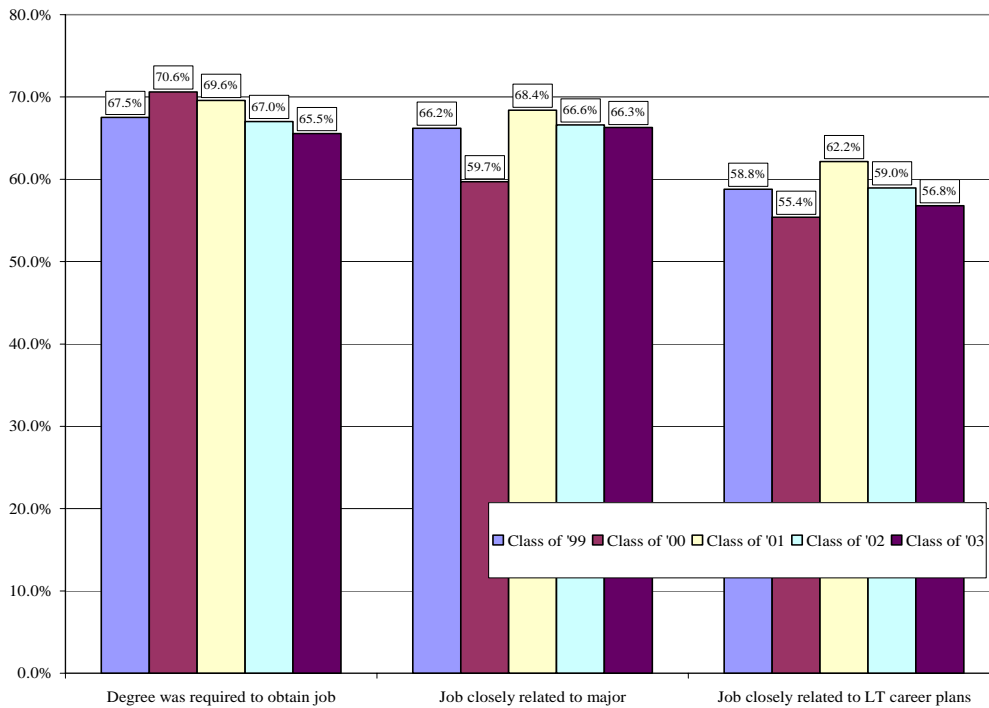


Chart 6: Relationships Between Job and Position Requirements, Major, and Long-Term Career Plans* (Full-Time Only)



* For the 2001-03 cohorts, responses to the items concerning job-to-major relationship and job-to-LT-career plans relationship are not comparable to prior years. Those questions on the instrument were changed from a three-response format (closely related, somewhat related, not related) to a five-response format (very closely related, closely related, somewhat related, poorly related, not related).

Chart 7: Rating of How Much Coursework Enhanced Ability to Do Job, by Relationship of Job to Major (Scale is from 1 to 10, where 1=Not at all enhanced and 10=Substantially enhanced)(Full-Time Only)

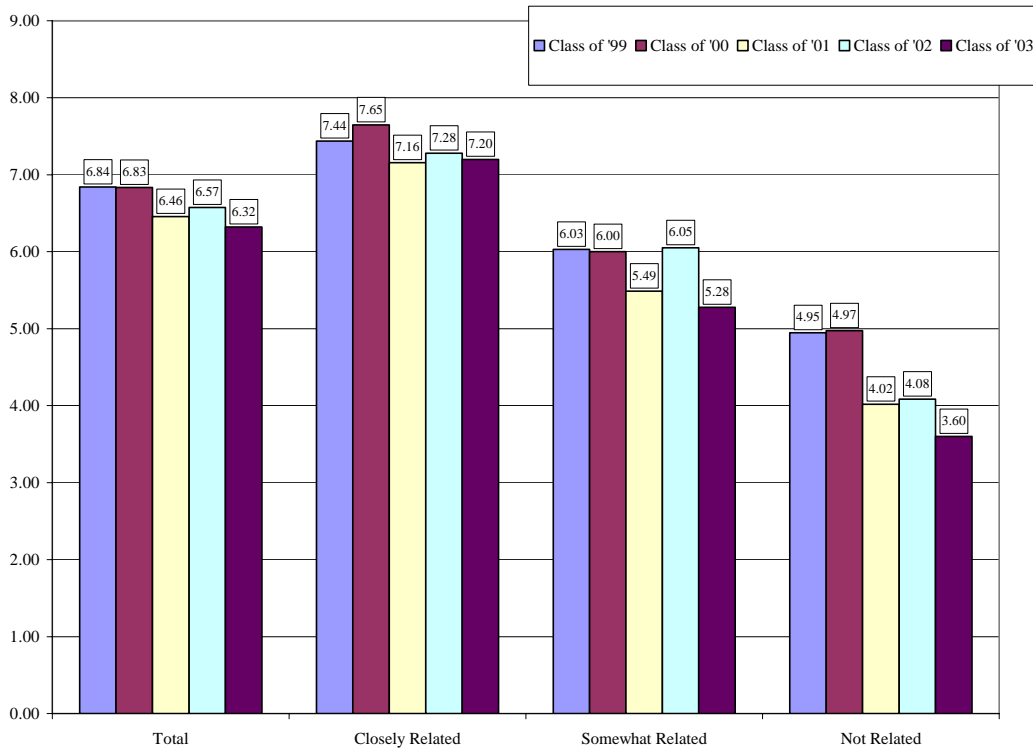


Chart 8: Rating of How Much Coursework and Coop Experience Enhanced Ability to Do Job, by Relationship of Job to Major (Full-Time Only, Class of 2003)
(scale is 1 to 10, where 1=Not at all enhanced and 10=Substantially enhanced)

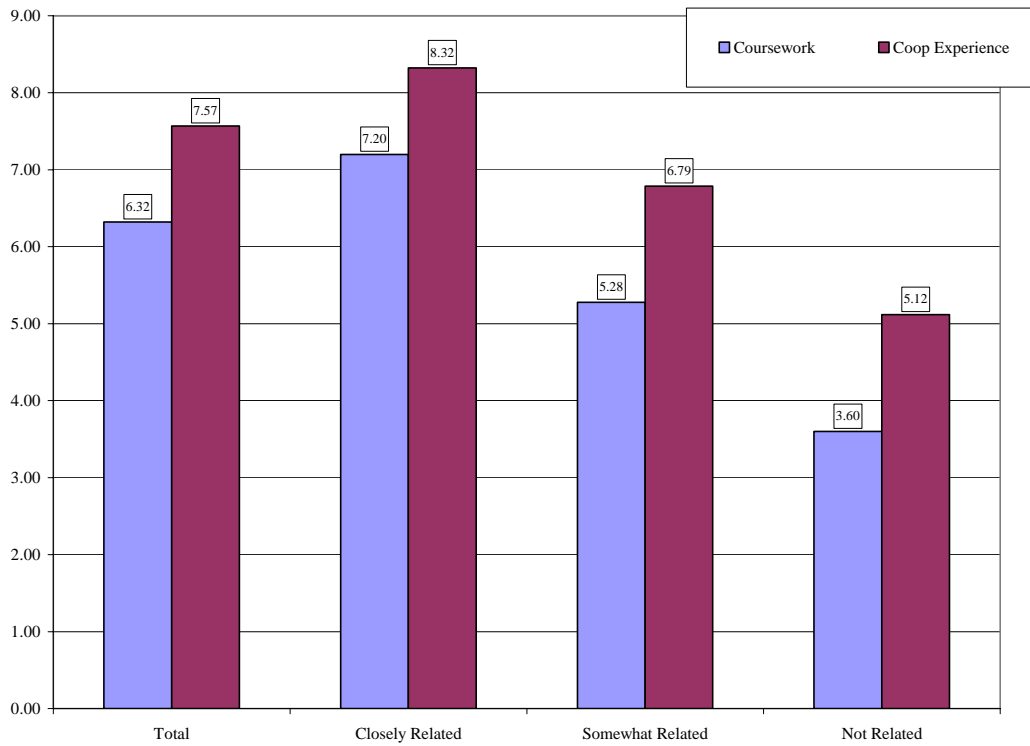
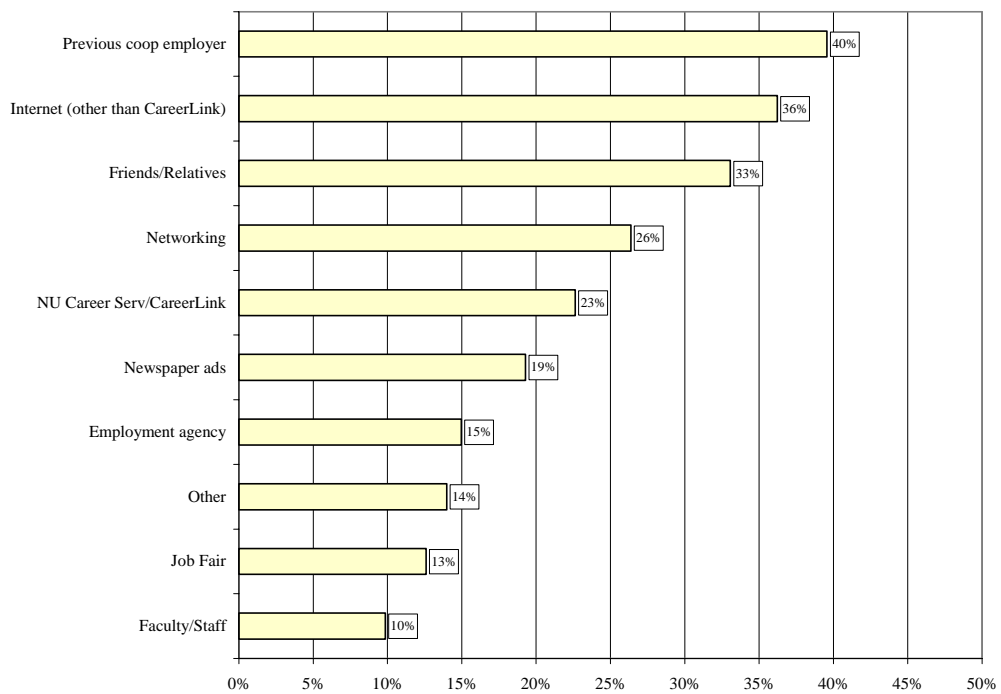


Chart 9: Methods Used in Job Search (Employed Only)



Career Preparation

Based on a scale from 1 (Not Well Prepared) to 5 (Very Well Prepared), graduates were asked to rate how well prepared they thought they were with respect to various career-related questions. Figures in Table 4 show the percent who thought they were “well” or “very well” prepared.

Table 4: Responses to Items Concerning Career Preparation

	Class of <u>1999</u>	Class of <u>2000</u>	Class of <u>2001</u>	Class of <u>2002</u>	Class of <u>2003</u>
• Knowing how to research the businesses or organizations in which you wanted to work	67%	67%	67%	70%	66%
• Knowing where to search for relevant job opportunities	69%	69%	67%	70%	63%
• Identifying your <i>immediate</i> work goals	69%	62%	59%	65%	56%
• Identifying your <i>long-term</i> work goals	61%	57%	57%	59%	55%
• Understanding what it takes to manage your career goals	61%	59%	51%	59%	53%

Graduate School Enrollment

	Class of <u>1999</u>	Class of <u>2000</u>	Class of <u>2001</u>	Class of <u>2002</u>	Class of <u>2003</u>
Number of graduates	526	581	508	703	533
Number enrolled	70	72	61	99	72
<u>Enrollment Rate</u>					
Total	13.3%	12.4%	12.0%	14.1%	13.5%
Full-Time	9.1%	7.4%	6.9%	11.0%	9.6%
Part-Time	4.2%	5.0%	5.1%	3.1%	3.9%
<u>Degree Pursued</u>					
Masters	71%	74%	81%	70%	76%
Doctorate	7%	7%	5%	7%	13%
Law	14%	13%	6%	16%	6%
Medical	1%	1%	3%	4%	3%
Other	6%	6%	5%	2%	3%
<u>Graduate School</u>					
Northeastern	30%	22%	23%	23%	24%
Boston University	3%	7%	7%	1%	4%
Boston College	4%	4%	3%	5%	6%
Suffolk	9%	4%	0%	8%	3%
UMass (all campuses)	1%	6%	7%	3%	8%
Unknown	3%	6%	7%	1%	0%
All other	50%	51%	54%	59%	56%
<u>Graduate Major</u>					
Arts/Design	1%	1%	2%	1%	6%
Social Sciences/Humanities	9%	7%	13%	14%	8%
Life/Physical Sciences	6%	3%	5%	1%	1%
Business	10%	15%	11%	6%	18%
Health	19%	17%	15%	20%	15%
Engineering	16%	14%	16%	13%	17%
Computer/Information Sciences	4%	1%	7%	6%	3%
Education/Social Work	9%	19%	13%	16%	17%
Criminal Justice	7%	7%	7%	4%	4%
Law	13%	11%	7%	17%	7%
Missing/Other	7%	4%	5%	1%	4%

Table 6: Institutions Selected for Graduate Study, Class of 2003

	<u>Number</u>	<u>Percent of Total</u>
Total	72	1
Northeastern University	17	24%
Boston College	4	6%
Boston University	3	4%
Emerson College	3	4%
University of Massachusetts	3	4%
Harvard University	2	3%
Massachusetts Institute of Tech	2	3%
Pace University	2	3%
Suffolk University	2	3%
UMass Amherst	2	3%
University of California	2	3%
American University	1	1%
Barry University	1	1%
Brown University	1	1%
Catholic University	1	1%
CSUS	1	1%
E MI UNIV	1	1%
Endicott College	1	1%
Euromed Marseille School	1	1%
Gallaudet University	1	1%
Lehigh University	1	1%
Mercy College	1	1%
Montclair State University	1	1%
NW University	1	1%
NYU	1	1%
Princeton University	1	1%
Providence College	1	1%
Saint Michael's College	1	1%
Salem State	1	1%
Seton Hall University	1	1%
Simmons College	1	1%
St Joseph College	1	1%
Texas A&M	1	1%
The Lebanese American U	1	1%
Touro Law Center	1	1%
Tufts University	1	1%
UMass Lowell	1	1%
University of Illinois	1	1%
University of Konstanz	1	1%
West Virginia University	1	1%
Widener University	1	1%

Table 7: Majors Pursued in Graduate School, Class of 2003

	<u>Number</u>	<u>Percent</u>
Total	72	100%
Criminal Justice	3	4%
Education	3	4%
Law	3	4%
MBA	3	4%
Taxation	3	4%
Missing	2	3%
Chemical Engineer	2	3%
Electrical Engineer	2	3%
Medicine (M.D.)	2	3%
Structural Engineer	2	3%
Accounting	1	1%
Administrative St	1	1%
Arts in Education	1	1%
Biomedical Engineer	1	1%
Business Administration	1	1%
Computer Science	1	1%
Computer Systems	1	1%
Corporate Law	1	1%
Counseling	1	1%
Engineering	1	1%
Engineering Manag	1	1%
Environmental Eng	1	1%
Finance	1	1%
History	1	1%
Industrial Engine	1	1%
Interior Design	1	1%
International Eco	1	1%
International Law	1	1%
International Spo	1	1%
Irish Studies	1	1%
Language Education	1	1%
M H Cnsl	1	1%
M.Ed. Information	1	1%
Marketing	1	1%
Master's of Educa	1	1%
Master's of Schoo	1	1%
Mechanic Engr	1	1%
Media arts	1	1%
MS Ocean Engineer	1	1%
MSW – Hlth	1	1%
Musicology	1	1%
Non-Profit	1	1%
Nursing	1	1%
Physician Assistant	1	1%
Physics	1	1%
PP & Admin.	1	1%
Psychology	1	1%
Public Administration	1	1%
School Counseling	1	1%
School Psychology	1	1%
Social Worker	1	1%
Speech Language Path	1	1%
Sport Management	1	1%
Sports Medicine	1	1%
Teaching	1	1%
Teaching Math	1	1%
Television Produc	1	1%

Responses Concerning Coop

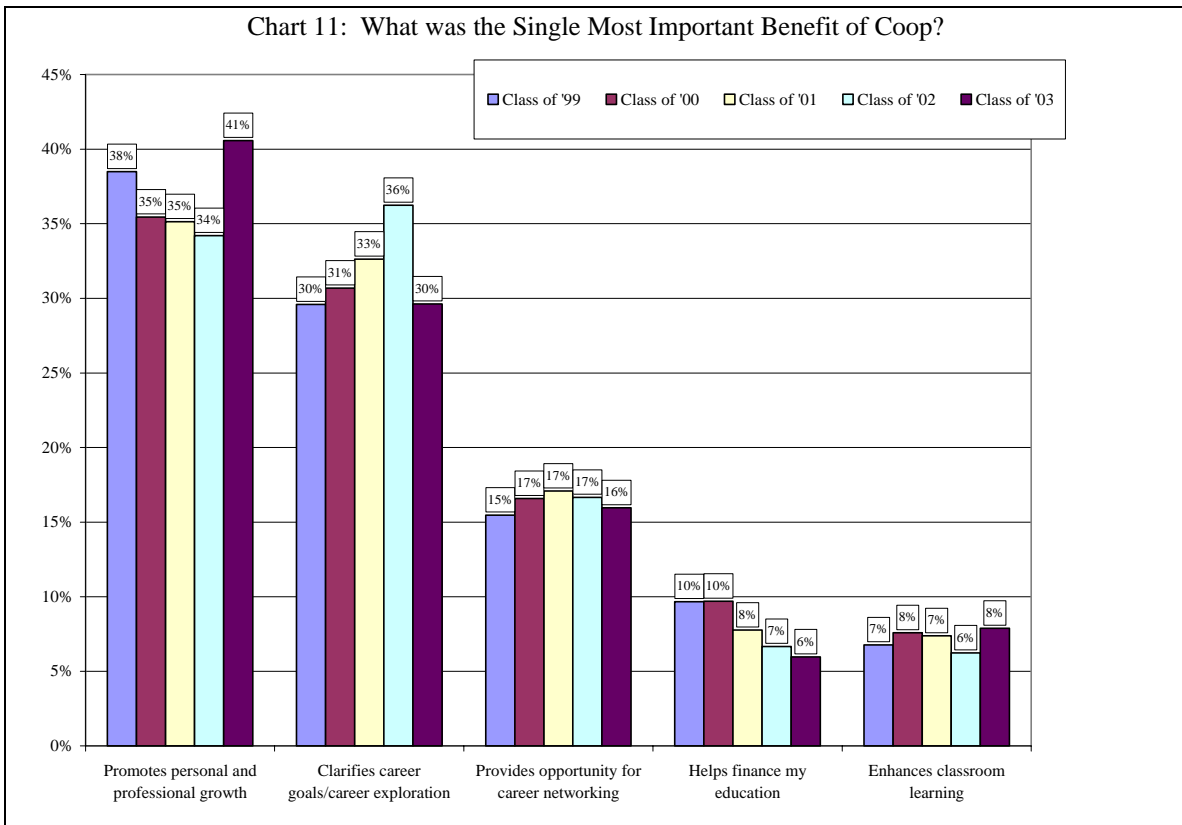
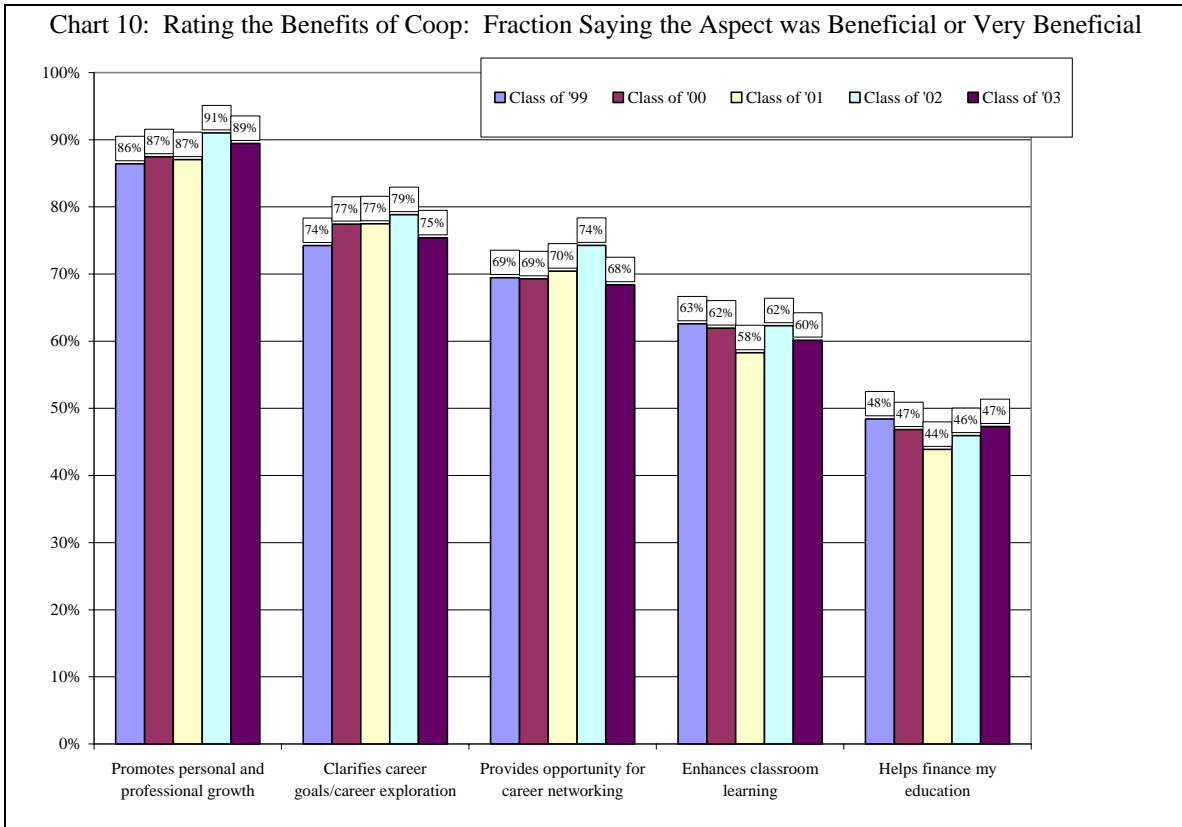


Chart 12: Were you Better Prepared for your Post-Graduation Job in Comparison to Other College Graduates who Had Not Participated in Coop? (Employed Only)

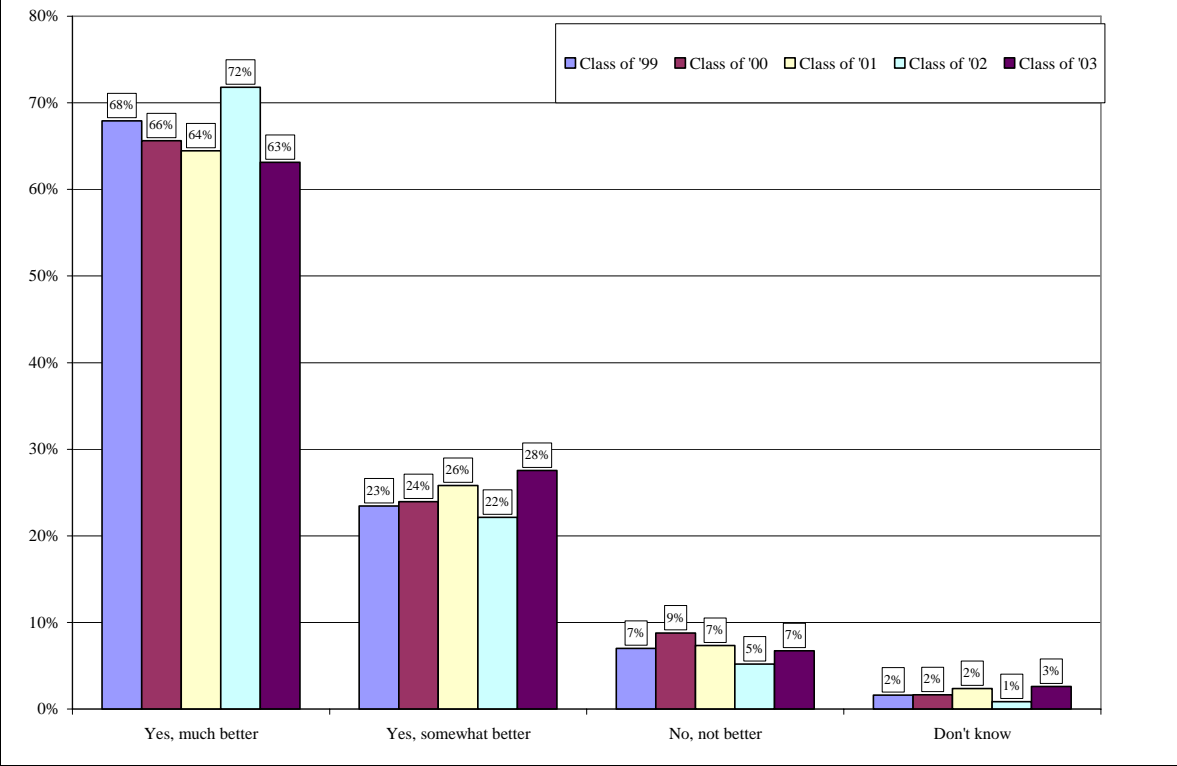


Chart 13: Did your Coop Experience have a Positive Impact on your Starting Salary? (Employed Only)

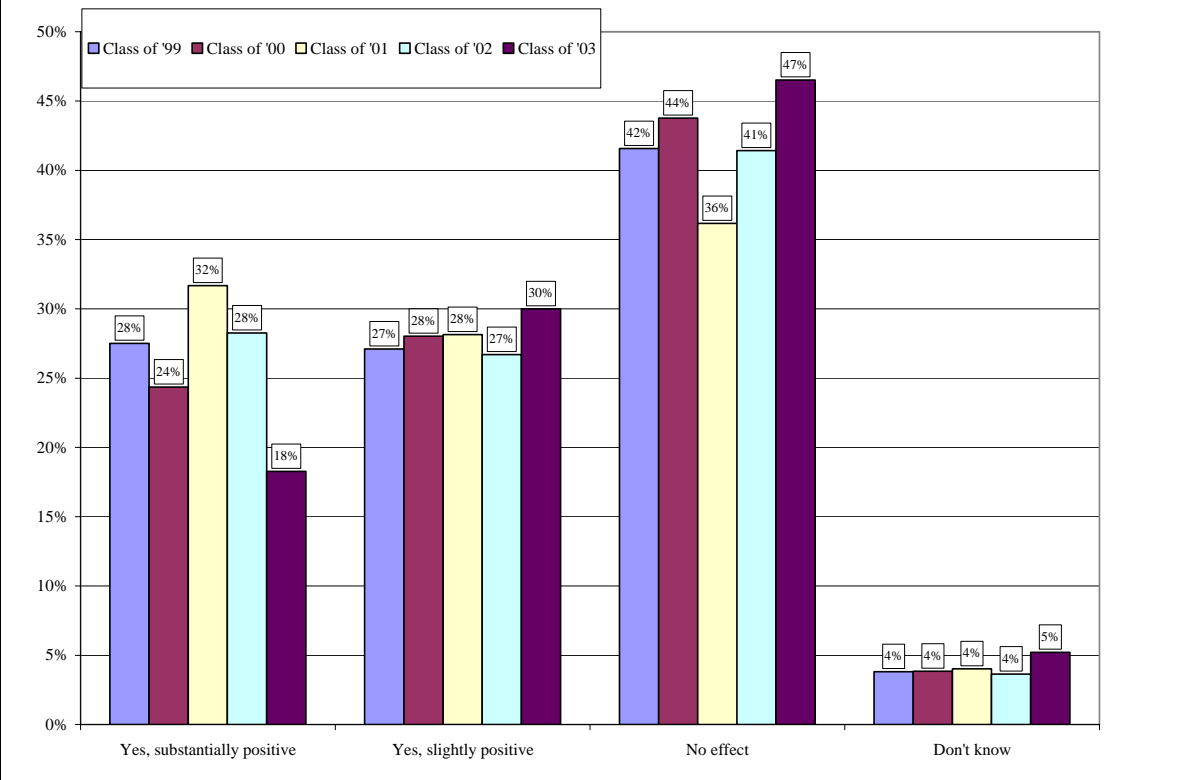


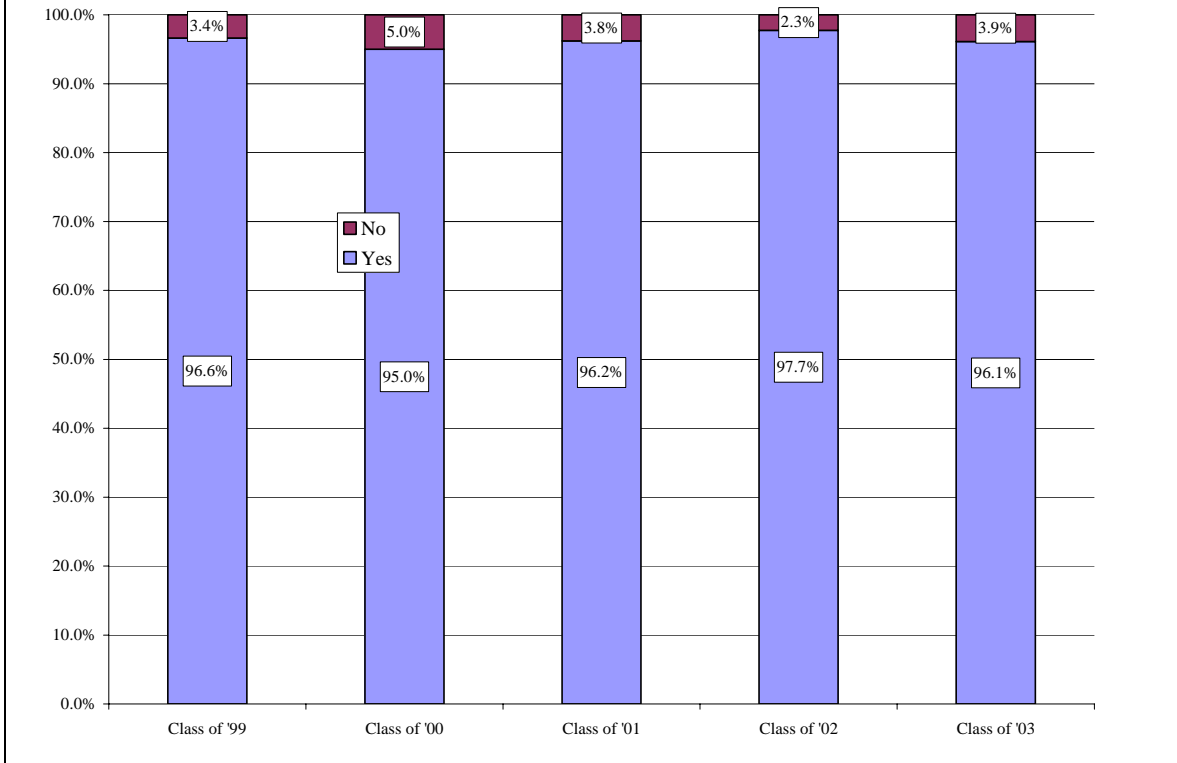
Table 8: Questions Concerning Coop and Academic Learning (Coop Participants Only)

	Classes Contributed to My Ability to Perform Coop Job			Acquired Knowledge/Skills that Enhanced Academic Performance			Northeastern did a Good Job Integrating Academic and Coop Learning		
	2001	2002	2003	2001	2002	2003	2001	2002	2003
Strongly Disagree	3%	3%	4%	2%	3%	3%	5%	5%	6%
Disagree	10%	7%	8%	8%	6%	6%	13%	11%	15%
Somewhat Agree	35%	32%	41%	23%	22%	30%	28%	26%	29%
Agree	39%	41%	35%	45%	42%	38%	39%	36%	35%
Strongly Agree	13%	17%	11%	22%	27%	24%	15%	22%	16%
Total	100%	100%	100%	100%	100%	100%	100%	100%	100%

Table 9: Characterization of Overall Satisfaction with Coop Experiences

	Class of 2001	Class of 2002	Class of 2003
Very Satisfied	46%	46%	39%
Satisfied	37%	35%	44%
Neutral	9%	11%	10%
Dissatisfied	5%	6%	4%
Very Dissatisfied	3%	2%	3%
Total	100%	100%	100%

Chart 14: Would you recommend a Coop Based Education to a Friend Who was Making Plans to Attend College?



Survey Findings by College/Major

This section of the report contains survey results broken down by college and major. In order to obtain larger sample sizes, majors have been combined. Table 10 shows the number of graduates in each of the broad major groups. The detailed majors comprising each group are shown in notes at the bottom of the table.

Table 10: Distribution of Graduates, by College/Major, Class of 2003

	<u>Number</u>	<u>Percent of Total</u>
Total	583	100%
<u>Arts and Sciences</u>		
American Sign Language	3	1%
Art, Music	14	2%
Communications	26	4%
English	10	2%
Human Services in A&S	9	2%
Journalism	27	5%
Physical Science	25	4%
Psychology	36	6%
Social Science	39	7%
Other A&S	8	1%
<u>Bouve</u>		
Athletic Training	8	1%
Cardiopulmonary Science	8	1%
Dental	0	0%
Med Lab Science	2	0%
Nursing	17	3%
Pharmacy	0	0%
Physical Therapy	27	5%
Speech Pathology & Audiology	3	1%
Other Bouve	1	0%
<u>Business</u>		
Accounting	18	3%
Finance	37	6%
International Business	20	3%
Management	21	4%
Marketing	39	7%
MIS	21	4%
Other Business	8	1%
Computer Science	19	3%
Criminal Justice	48	8%
<u>Engineering</u>		
Chemical	12	2%
Civil	10	2%
Computer Engineering	14	2%
Electrical	9	2%
Mechanical, Industrial	23	4%
Engineering Tech.	21	4%
<ul style="list-style-type: none"> • Art, Music includes Architecture (1), Art (3), Media Arts & Design (6), Music (3), and Theatre (1). • Physical Science includes Behavioral Neuroscience (1), Biochemistry (1), Biology (15), Biomedical Phys (2), Environ. Geology (1), Mathematics (3), and Geology (2). • Social Science includes Economics (4), History (2), International Affairs (1), Political Science (18), and Sociology or Sociology/Anthropology (14). • Other Arts and Science includes Linguistics (1), Dual Major (5), Multimedia Studies (1), and Philosophy (1). • Other Bouve includes Toxicology (1). • Dual majors in Business (for example, Finance and Insurance/Marketing) are included in the specialty listed first. • Other Business includes Entrepreneurship (3), Human Resource Management (3), and Logistics & Transp. (2). 		

Table 11: Employment Status by College and Major, Class of 2003

	Employed			<u>Unemp.</u>	Not Emp, Not Looking	Valid <u>N</u>	Employed			<u>Unemp.</u>	Not Emp, Not Looking	Valid <u>N</u>
	<u>Full-Time</u>	Part-Time, by Choice	Part-Time, Want FT				<u>Full-Time</u>	Part-Time, by Choice	Part-Time, Want FT			
Total	459	33	16	45	30	583	79%	6%	3%	8%	5%	100%
<u>Arts and Sciences</u>												
Total	147	18	8	16	8	197	75%	9%	4%	8%	4%	100%
ASL	3	0	0	0	0	3	100%	0%	0%	0%	0%	100%
Art, Music	11	3	0	0	0	14	79%	21%	0%	0%	0%	100%
Communications	17	3	1	3	2	26	65%	12%	4%	12%	8%	100%
English	10	0	0	0	0	10	100%	0%	0%	0%	0%	100%
Human Serv in A&S	8	0	0	1	0	9	89%	0%	0%	11%	0%	100%
Journalism	18	3	2	3	1	27	67%	11%	7%	11%	4%	100%
Physical Science	18	2	0	3	2	25	72%	8%	0%	12%	8%	100%
Psychology	25	4	1	4	2	36	69%	11%	3%	11%	6%	100%
Social Science	31	1	4	2	1	39	79%	3%	10%	5%	3%	100%
Other A&S	6	2	0	0	0	8	75%	25%	0%	0%	0%	100%
<u>Bouve</u>												
Total	47	8	0	5	6	66	71%	12%	0%	8%	9%	100%
Athletic Train	6	1	0	1	0	8	75%	13%	0%	13%	0%	100%
Cardio Science	8	0	0	0	0	8	100%	0%	0%	0%	0%	100%
Dental	0	0	0	0	0	0	---	---	---	---	---	---
Med Lab Science	1	0	0	0	1	2	50%	0%	0%	0%	50%	100%
Nursing	16	0	0	0	1	17	94%	0%	0%	0%	6%	100%
Pharmacy	0	0	0	0	0	0	---	---	---	---	---	---
Physical Therapy	13	7	0	4	3	27	48%	26%	0%	15%	11%	100%
Speech Path & Aud.	2	0	0	0	1	3	67%	0%	0%	0%	33%	100%
Other Bouve	1	0	0	0	0	1	100%	0%	0%	0%	0%	100%
<u>Business</u>												
Total	149	3	3	5	4	164	91%	2%	2%	3%	2%	100%
Accounting	18	0	0	0	0	18	100%	0%	0%	0%	0%	100%
Finance	36	0	0	1	0	37	97%	0%	0%	3%	0%	100%
Int'l Business	17	1	0	1	1	20	85%	5%	0%	5%	5%	100%
Management	19	0	1	0	1	21	90%	0%	5%	0%	5%	100%
Marketing	33	1	2	2	1	39	85%	3%	5%	5%	3%	100%
MIS	18	1	0	1	1	21	86%	5%	0%	5%	5%	100%
Other Business	8	0	0	0	0	8	100%	0%	0%	0%	0%	100%
Computer Science	15	0	2	2	0	19	79%	0%	11%	11%	0%	100%
CJ	38	2	0	6	2	48	79%	4%	0%	13%	4%	100%
<u>Engineering</u>												
Total	48	2	3	6	9	68	71%	3%	4%	9%	13%	100%
Chemical	8	1	0	1	2	12	67%	8%	0%	8%	17%	100%
Civil	8	0	0	1	1	10	80%	0%	0%	10%	10%	100%
Computer	10	0	1	2	1	14	71%	0%	7%	14%	7%	100%
Electrical	3	1	1	1	3	9	33%	11%	11%	11%	33%	100%
Mechanical, Industrial	19	0	1	1	2	23	83%	0%	4%	4%	9%	100%
Engineering Tech.	15	0	0	5	1	21	71%	0%	0%	24%	5%	100%

Table 12: Graduate Enrollment Status by Undergraduate College and Major, Class of 2003

	Valid <u>Total</u>	<u>Number</u>			<u>Enrollment Rate</u>		
		Total <u>Enrolled</u>	Enrolled <u>Full-Time</u>	Enrolled <u>Part-Time</u>	Total	Full-Time	Part-Time
Total	559	79	58	21	14%	10%	4%
<u>Arts and Sciences</u>							
Total	192	31	21	10	16%	11%	5%
ASL	3	1	1	0	33%	33%	0%
Art, Music	14	3	2	1	21%	14%	7%
Communications	25	3	2	1	12%	8%	4%
English	9	0	0	0	0%	0%	0%
Human Serv in A&S	8	1	0	1	13%	0%	13%
Journalism	27	2	2	0	7%	7%	0%
Physical Science	24	6	4	2	25%	17%	8%
Psychology	35	8	5	3	23%	14%	9%
Social Science	39	6	5	1	15%	13%	3%
Other A&S	8	1	0	1	13%	0%	13%
<u>Bouve</u>							
Total	64	10	10	0	16%	16%	0%
Athletic Train	8	1	1	0	13%	13%	0%
Cardio Science	7	0	0	0	0%	0%	0%
Dental	0	0	0	0	----	----	----
Med Lab Science	2	1	1	0	50%	50%	0%
Nursing	17	0	0	0	0%	0%	0%
Pharmacy	0	0	0	0	----	----	----
Physical Therapy	26	7	7	0	27%	27%	0%
Speech Path & Aud.	3	1	1	0	33%	33%	0%
Other Bouve	1	0	0	0	0%	0%	0%
<u>Business</u>							
Total	151	16	8	8	11%	5%	5%
Accounting	16	7	1	6	44%	6%	38%
Finance	35	1	0	1	3%	0%	3%
Int'l Business	18	2	2	0	11%	11%	0%
Management	19	2	2	0	11%	11%	0%
Marketing	35	3	2	1	9%	6%	3%
MIS	21	1	1	0	5%	5%	0%
Other Business	7	0	0	0	0%	0%	0%
Computer Science	18	2	0	2	11%	0%	11%
CJ	48	4	4	0	8%	8%	0%
<u>Engineering</u>							
Total	66	15	14	1	23%	21%	2%
Chemical	12	3	3	0	25%	25%	0%
Civil	9	4	3	1	44%	33%	11%
Computer	13	1	1	0	8%	8%	0%
Electrical	9	5	5	0	56%	56%	0%
Mechanical, Industrial	23	2	2	0	9%	9%	0%
Engineering Tech.	20	1	1	0	5%	5%	0%

Chart 15: Positive Outcome Rate (Graduate is Either Employed or Enrolled), by College, Class of 2003

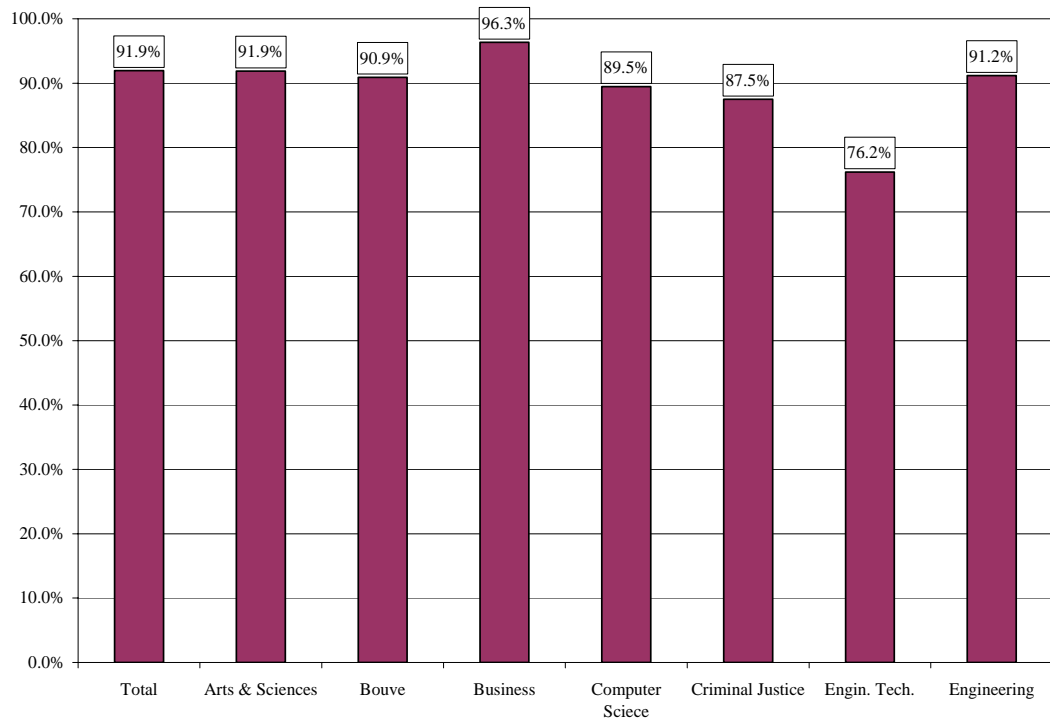


Chart 16: Full-Time Positive Outcome Rate (Graduate is Either Employed Full-Time or Enrolled Full-Time), by College, Class of 2003

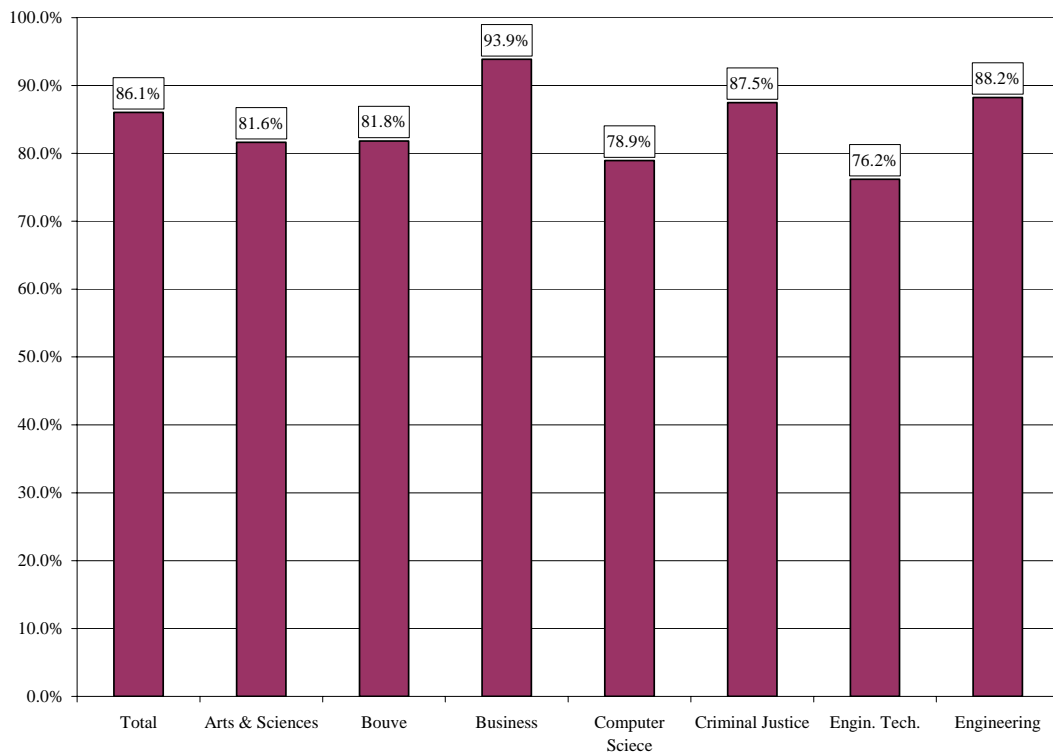


Table 13: Annual Salary of Full-Time Employed Graduates, Class of 2003

	<u>Mean</u>	<u>Median</u>	<u>Minimum</u>	<u>Maximum</u>	<u>N</u>
Total	\$37,952	\$35,000	\$10,065	\$85,000	393
<u>Arts and Sciences</u>					
Total	\$31,598	\$31,000	\$12,500	\$65,000	127
ASL	\$37,767	\$30,000	\$23,300	\$60,000	3
Art, Music	\$29,727	\$30,000	\$19,000	\$39,500	11
Communications	\$33,164	\$32,250	\$20,000	\$50,000	14
English	\$31,625	\$30,000	\$24,000	\$48,000	8
Human Serv in A&S	\$32,061	\$35,000	\$22,000	\$40,000	7
Journalism	\$31,219	\$31,850	\$19,000	\$40,000	16
Physical Science	\$31,546	\$32,000	\$15,000	\$45,150	14
Psychology	\$30,926	\$31,000	\$15,000	\$50,000	23
Social Science	\$32,096	\$32,000	\$12,500	\$65,000	26
Other A&S	\$28,800	\$28,000	\$25,000	\$32,000	5
<u>Bouve</u>					
Total	\$42,688	\$45,000	\$10,065	\$63,000	44
Athletic Train	\$29,600	\$30,000	\$25,000	\$33,000	5
Cardio Science	\$42,125	\$40,000	\$30,000	\$60,000	8
Dental	---	---	---	---	---
Med Lab Science	---	---	---	---	---
Nursing	\$49,267	\$50,000	\$40,000	\$63,000	15
Pharmacy	---	---	---	---	---
Physical Therapy	\$45,315	\$46,500	\$35,000	\$58,000	13
Speech Pathology & Aud.	\$16,589	\$16,589	\$10,065	\$23,112	2
<u>Business</u>					
Total	\$39,481	\$37,750	\$20,000	\$85,000	122
Accounting	\$39,636	\$41,500	\$27,000	\$47,000	14
Finance	\$41,131	\$40,000	\$21,000	\$75,000	27
Int'l Business	\$39,375	\$37,750	\$22,000	\$57,000	12
Management	\$41,722	\$37,500	\$25,000	\$75,000	18
Marketing	\$35,750	\$34,500	\$25,000	\$60,000	27
MIS	\$42,450	\$40,000	\$23,000	\$85,000	18
Other Business	\$33,065	\$33,194	\$20,000	\$50,000	6
Computer Science	\$52,517	\$56,000	\$29,040	\$85,000	14
CJ	\$31,723	\$32,000	\$15,000	\$45,000	34
<u>Engineering</u>					
Total	\$46,014	\$46,400	\$15,000	\$72,450	40
Chemical	\$42,575	\$41,300	\$30,000	\$53,000	8
Civil	\$45,500	\$45,700	\$37,000	\$55,000	7
Computer	\$45,350	\$47,000	\$28,000	\$72,450	7
Electrical	\$48,000	\$48,000	\$46,000	\$50,000	2
Mechanical, Industrial	\$48,000	\$50,250	\$15,000	\$60,000	16
Engineering Tech.	\$46,083	\$50,000	\$32,000	\$54,000	12

Table 14: Median Inflation-Adjusted Annual Salary of Full-Time Employed Graduates,
Classes of 1999-2003 (in April 2004 Dollars)

	Median Salary					Number of Cases				
	Class of 1999	Class of 2000	Class of 2001	Class of 2002	Class of 2003	Class of 1999	Class of 2000	Class of 2001	Class of 2002	Class of 2003
Total	\$38,412	\$40,384	\$39,733	\$36,823	\$35,000	416	454	332	489	391
<u>Arts and Sciences</u>										
Total	\$31,059	\$31,882	\$31,368	\$31,708	\$31,100	116	128	104	177	126
ASL	----	\$30,288	----	\$33,754	\$30,000	0	4	0	6	3
Art, Music	\$30,181	\$37,196	\$30,323	\$33,897	\$30,000	20	11	13	24	11
Communications	\$32,925	\$31,882	\$32,414	\$31,708	\$32,250	11	19	16	18	14
English	\$29,083	----	----	\$30,686	\$30,000	7	0	0	12	8
Human Serv in A&S	----	\$27,100	\$31,368	\$30,686	\$35,000	0	10	6	11	7
Journalism	\$29,907	\$34,008	\$28,231	\$30,174	\$31,850	10	7	9	20	16
Physical Science	\$27,437	\$32,945	\$34,505	\$36,413	\$32,000	21	25	20	24	14
Psychology	\$26,888	\$28,428	\$29,277	\$30,686	\$31,000	12	20	14	22	23
Social Science	\$38,412	\$34,008	\$34,505	\$30,686	\$32,000	24	25	21	33	25
Other A&S	\$27,437	\$31,882	\$33,459	\$31,708	\$28,000	11	7	5	7	5
<u>Bouve</u>										
Total	\$43,900	\$42,510	\$41,824	\$40,914	\$45,000	85	102	47	48	43
Athletic Train	\$35,120	\$32,148	\$20,598	\$34,777	\$30,000	5	6	10	6	5
Cardio Science	\$38,961	\$34,539	\$41,824	\$36,823	\$40,000	6	10	9	4	8
Dental	\$53,777	----	----	\$54,723	----	6	0	0	2	0
Med Lab Science	\$34,022	----	\$40,256	\$37,232	----	5	0	2	3	0
Nursing	\$41,705	\$44,635	\$48,621	\$46,028	\$49,500	13	28	12	25	14
Pharmacy	\$74,904	\$76,518	\$84,736	----	----	26	11	8	0	0
Physical Therapy	\$40,881	\$42,510	\$41,824	\$41,272	\$46,500	24	40	3	4	13
Speech Pathology & Aud.	----	----	\$20,912	\$33,243	\$16,589	0	0	3	4	2
Other Bouve	----	\$42,510	----	----	\$32,000	0	7	0	0	1
<u>Business</u>										
Total	\$41,156	\$42,510	\$41,824	\$38,868	\$37,750	84	105	88	139	122
Accounting	\$38,961	\$40,384	\$42,347	\$45,005	\$41,500	12	14	16	17	14
Finance	\$43,900	\$42,510	\$41,824	\$39,891	\$40,000	15	22	31	43	27
Int'l Business	\$36,217	\$41,447	\$41,824	\$31,606	\$37,750	11	6	3	7	12
Management	\$32,925	\$41,447	\$32,414	\$39,891	\$37,500	7	5	2	6	18
Marketing	\$40,223	\$40,384	\$43,393	\$38,868	\$34,500	18	31	18	33	27
MIS	\$54,874	\$51,543	\$47,052	\$38,880	\$40,000	9	16	11	25	18
Other Business	\$36,217	\$42,510	\$36,596	\$37,845	\$33,194	12	11	7	8	6
Computer Science	\$60,362	\$56,326	\$57,508	\$54,058	\$56,000	12	8	11	12	14
CJ	\$30,730	\$31,882	\$33,459	\$31,504	\$32,000	51	43	35	40	34
<u>Engineering</u>										
Total	\$49,387	\$51,012	\$55,417	\$51,143	\$46,400	53	56	39	60	40
Chemical	\$51,582	\$51,012	\$52,280	\$49,097	\$41,300	7	12	8	7	8
Civil	\$38,961	\$45,432	\$42,347	\$42,960	\$45,700	18	14	8	16	7
Computer	----	----	----	\$56,768	\$47,000	0	0	0	12	7
Electrical	\$54,874	\$60,842	\$57,634	\$53,188	\$48,000	13	12	19	3	2
Mechanical, Industrial	\$49,387	\$53,137	\$54,372	\$52,677	\$50,250	15	18	4	22	16
Engineering Tech.	\$49,387	\$50,773	\$52,280	\$49,097	\$50,000	15	12	7	13	12

Table 15: Employers and Job Titles of Full-Time Employed Graduates

<u>Employer</u>	<u>Job Title</u>
Arts and Sciences	
<u>ASL</u>	
Freelance	Freelance Interpreter
NY Tech College	Interpreter
Edco Collaborative	Sign Lang Interpreter
<u>Art, Music</u>	
Huntington Theatre Company	Box Office Associate
Alba Sales Associates	Art Director
	Sales
Ipromoteu	Graphic Design Specialist
William Morris Agency, Inc.	International Assistant
Buffalo Design Collaborative	Architectural Intern
NYC Dept Of Education	Teacher
The Topps Company	Image Coordinator
Lyons Lavey Nickel Swift, Inc	Production Assistant
The Warren Group	Graphic Designer
Ethan Allen	Design Consultant
<u>Communications</u>	
Blue Cross Blue Shield Of Massachusetts	Fraud Investigator
Kelly Services	Temp
Northeastern University	Undergraduate Admissions Counselor
US Surgical T Healthcare	Development Engr
Kelley Habib John Innovative Marketing	Junior Associate, Marketing Services
Ashland Public Schools	Media Specialist
Membersfirst, Inc.	Project Manager
Northeastern University	Staff Assistant
Viacom Station Sales	National Sales Coordinator
Bank Of America	Technology Analyst
Carat USA	
Tracy Locke	Project Manager
Casi	Assistant To The President
Merkley & Partners	Junior Art Buyer
Miami Dolphins	Sales Re/Acct Executive
Twentieth Century Fox	Comedy Development Asst
<u>English</u>	
The Wahlstrom Group	Account Manager
Reach Out And Read	National Programs Assistant
Harvard Risk Mgmt (Law Off of Hamrock, Tocci & Cass)	Paralegal
Hoosac Valley High School	Teacher
Amvf Productions	Senior Account Executive
Beth Israel Deaconess Medical Center	Administrative Assistant To Research Doctor
Handex	Proposal/Bid Coordinator
Roosevelt School District #66	Teacher
Children's Hospital Boston	Advocacy Assistant
Quest Diagnostics	Client Service Rep II

(Continued)

Table 15 (Continued)

<u>Employer</u>	<u>Job Title</u>
<u>Human Services in A&S</u>	
American Lung Assoc Of NH	Office Mgr/Dev Associate
Boston Renaissance Charter School	5th Grade Teacher
Harvard University	Administrative Assistant
Town Of Andover	Program Coordinator
Mattapan Early Education Center	Long Term Substitute
Private Employer	Nanny
McLean Hospital	Mental Health Specialist
<u>Journalism</u>	
Massachusetts Children's Trust Fund	Development Officer
America East Conference	Assistant Director Of Communications
Northeastern University	Media Relations Specialist
New England Patriots	IT Support Supervisor
Comcast Spotlight	Traffic Coordinator
Mac-Gray Corp	Marketing Assistant
Town Of Framingham	Customer Service Rep
Career Resources Corporation	Job Developer
CCI/Crosby Publishing	Associate Editor
Newbury Comics	Clerk
Cigna	Marketing Assoc
Katz Media	Account Manager
Northeastern University	Events Planning Assistant II
Weber Shoudwick Worldwide	Acct Coordinator
Uptodate	International Sales & Marketing Coordinator
The Via Group	Account Assistant
Student Partnerships Worldwide	Peer Educator
Elite Florida Properties	Sales Assoc
<u>Physical Science</u>	
US Dept of Transportation	Environmental Engineer
Geologic Services Co.	P1
Novartis Pharmaceuticals Corp	Associate Scientist
Windsor House Adult Day Health Care	Assistant To Executive Director
Andover Pediatrics	Nursing Assistant
Willimansett West Nursing Home	CNA (Certified Nurses Assistant)
Brigham And Women's Hospital	Research Assistant Ii
MSPCA/AAMC	Emergency/Critical Care
Waltham High School	Educator
Urban Outfitters	Register Aide
UMass Medical School	Research & Development Assistant Scientist
NYC Dept Of Education	Teacher
Columbia University	Technician B
Brigham & Women's Hospital	Research Assistant
Boston Public Schools	Teacher
Nathan Kline Inst	Research Assistant
Boise	Woldlife Surveyy II
Northeastern University	Lab Manager

(Continued)

Table 15 (Continued)

<u>Employer</u>	<u>Job Title</u>
<u>Psychology</u>	
Brigham And Women's Hospital	Administrative Assistant
Vistarms	Recruiter/ Sourcer
Aerotek Scientific	Scientific Recruiter
Pond Ave Associates	Practice Coord
The Singh Company	Creative Associate
	Teacher
Bright Hor Family Solutions	Associate Teacher
Macy's Men Store	Ralph Lauren Polo Specialist
Shrewsbury Public Schools	Teacher
Aspect Medical Systems	Clinical Research Associate
Brigham And Women's Hospital	Lung Transplant Coordinator
Beantown Physio, Inc	Office Manager
Dept Of Social Services	Social Worker
Hawthorne Foundation	Teaching Assistant
Teaneck High School	Teacher
Charleys	Dining Room Manager
Kids Are People Elementary School	Kindergarten/First Grade Teacher
Vinfen Corporation	Residential Counselor
Allegis Group	Recruiter
Beth Israel Deaconess Medical Center	Clinical Research Coordinator
Spaulding Rehabilitation Hospital	Tbi Research Assistant
Guy Abelson Catering	Event Coordinator
NRI Community Services	Case Worker
Vinfen	Residential Counselor
Altana Pharma	Clinical Oper Assistant
<u>Social Sciences</u>	
Cetrulo & Capone, LLP	Legal Assistant
Barr & Cole	Paralegal
Cambridge Associates, LLC	Associate
Massachusetts Stand For Children	Community Organizer
State Street Corporation	Business Analyst Ii
Barr & Cole	Paralegal
Boston City Council	Legislative Aide
Defense Credit Union Council	Admin Assistant
Stein, Mitchell & Mezines LLP	Legal Assistant
Premier Insurance Company	Claims Representative
Legal Aid Justice Center	Paralegal/Student Advocate
City of Somerville	Public Information Officer
Corp For Nat'l Service	Team Leader
USD/Hagshama	Northeast Regional Director
David's Bridal	Wedding Consultant
Ropes & Gray	Case Assistant
Clough Capital Partners, LP	Associate
Mason Elementary School	Teacher
Germaine Lawrence	Assistant Residential Supervisor/ School Counselor
Heath Extended Day Program	Lead Teacher In Grade 3-6 Program
Sportsticker	Bureau Reporter

(Continued)

Table 15 (Continued)

<u>Employer</u>	<u>Job Title</u>
<u>Social Sciences (continued)</u>	
City of Boston	Affordable Housing Assistant
Manalapan-Englishtown Board Of Education	Teacher
The New England Council	Executive Assistant
Law Firm	Law Clerk
Fleet Bank	Claims Proc Associate
CIEE	Customer Service Coordinator
Northeastern University	Student Financial Service Rep
Medical Info Technology	Marketing Consultant
Communities United Inc	Parent Liaison
TWG, Inc.	Project Manager
<u>Other A&S</u>	
Kessler Financial Services	Desktop Coordinator
THE Americas	Marketing Associate
Columbia Pictures	Production Assistant
Fish And Richardson	Document Delivery Specialist
CVS	Assistant Manager
Northeastern University	Laboratory Coordinator/Research Assistant
Bouve	
<u>Athletic Training</u>	
Athletic Train	
Nauset Regional High School	Head Athletic Training
New England Patriots	Assistant Athletic Trainer
Memorial Hospital Of Rhode Island	Athletic Trainer
South County Physical Therapy	Athletic Trainer
Brigham And Women's Hospital	Medical Assistant
Northeastern University	Coord of Ticket Operations & Sales (Athletics)
<u>Cardio Science</u>	
Children's Hospital Boston	Respiratory Therapist
Children's Hospital	Respiratory Therapist
Children's Hospital	Respiratory Therapist
Children's Hospital	Respiratory Therapist
Mass General Hospital	Cardiovascular Tech
St. Elizabeth's Medical Center	Exercise Technician
Mass General Hospital	Cardiovascular Tech
Tufts-NEMC	Cardiovascular Tech
<u>Med Lab Science</u>	
Cape Cod Hospital	Medical Technologist

(Continued)

Table 15 (Continued)

<u>Employer</u>	<u>Job Title</u>
<u>Nursing</u>	
New England Medical Center	Registered Staff Nurse (PICU)
Children's Hospital	Registered Nurse
Mass General Hospital	Registered Nurse
Brigham & Women's Hospital	Registered Nurse
Tampa General Hospital	RN
Cottage Hospital	RN
New England Medical Ctr	RN
Massachusetts General Hospital	Registered Nurse
Massachusetts General Hospital	Registered Nurse
Boston Children's Hospital	RN
Massachusetts General Hospital	Registered Nurse
Brooklyn Hospital	RN
Beth Israel Deaconess Medical Center	Registered Nurse
MBTA	Revenue Coord
Beth Israel Deaconess Medical Center	Registered Nurse
New England Medical Center	Registered Nurse
<u>Physical Therapy</u>	
West Jefferson Medical Center	Physical Therapist
Inova Physical Therapy (Start May 3rd)	Physical Therapist
Spaulding Rehabilitation Hospital	Physical Therapist
Kennedy Brothers Phy Therapy	Physical Therapist
Riverside Community Care	Physical Therapist
South County Hospital	Physical Therapist
Tufts New England Med Ctr	Physical Therapist
Health South Rehab Center	Physical Therapy
Youville Hospital	Physical Therapist
Kessler Rehab Hospital	Physical Therapist
Select Medical Corp	Physical Therapist
Kindred Healthcare	Physical Therapist
Sports Physical Therapy Assoc	Physical Therapist
<u>Speech Pathology & Audiology</u>	
Melmark New England	ABA Classroom Counselor
Perkins School For The Blind	Clinical Aide
<u>Other Bouve</u>	
Ram Scientific Inc	Inside Sales Support & Svc
Business	
<u>Accounting</u>	
Ktr Newmark	Associate
Pricewaterhousecoopers	Assurance Associate
Ernst & Young LLP	Tax Compliance Staff
American Express	Staff Accountant
NStar Electric And Gas	Associate Account Analyst
Ernst & Young LLP	Tax Compliance Staff
Deloitte & Touche LLP	Assoc Tax Consultant
Deloitte	Tax Consultant

(Continued)

Table 15 (Continued)

<u>Employer</u>	<u>Job Title</u>
<u>Accounting (continued)</u>	
Pricewaterhouse Coopers, LLP	Associate
Pricewaterhousecoopers	Associate
The Gillette Company	Financial Analyst
Fidelity Investment	Accounting Analyst
Deloitte & Touche	Audit Staff
Pricewaterhousecoopers	Tax Associate
Public Consulting Group Inc	Accts Payable
Pricewaterhousecoopers LLP	Tax Associate
	Jr Financial Analyst
<u>Finance</u>	
Morgan Stanley	Financial Advisor
State Street	Portfolio Administrator
Federal Deposit Insurance Corp.	Assistant Bank Examiner
Harvard Medical School	Cost Analyst
Goldman Sachs	Trader
Merrill Lynch	Assistant Traders
Liberty Mutual	Finance Dev Associate
Pioneer Investments	Data/Proxy Analyst
Smith Barney	Equity Research Assistant
Harbourvest Partners	Financial Reporting Assistant
Provident Corporate Finance, LLC	Associate
Merrill Lynch	Trading Asst
Sentinel Benefits	Marketing Associate
Allmass Insurance Agency	Sales Rep
Grasshopper Tree & Landscape Incorporated	Office Manager
Fidelity Investments	Financial Analyst
Baystate Financial Services	Assistant
John Hancock	Sales Analyst
MFS Investment Management	Fixed Income Trading Assistant
The Gillette Company	Financial Analyst
State Street	Portfolio Accountant
Teel Realty	Investment Assistant
Morgan Stanley	Financial Advisor
FDIC	Assistant Examiner
Wachovia	Sales Assistant Ii
G.T. Reilly And Company	Staff Accountant
Merrill Lynch	Analyst
	Associate
Price Waterhouse Coopers LLP	Tax Associate
Gannett, Welsh And Kotler	Jr. Municipal Bond Trader
Goldman Sachs & Co.	Assistant Portfolio Manager
Digitas	Financial Analyst
Liberty Mutual Group	New England Region Underwriter I
The Hartford Ins Group	Financial Analyst
Fidelity Investments	Corp Actions Analyst

(Continued)

Table 15 (Continued)

<u>Employer</u>	<u>Job Title</u>
<u>International Business</u>	
Banco Cuscatlan	
Stebbins Bradley Harvey & Miller, P.A.	Legal Assistant
Kpmg Deutsche Treuhand Gesellschaft	Junior Executive
Invest Northern Ireland	Executive Assistant
Investors Bank And Trust	Mutual Fund Accounting
Toys R Us	Sales Mgr
Wheatmark	Book Marketing Consultant
Applied Insurance Research Worldwide	Risk Analyst (Consulting Group)
Place Media	Owner/Founder
Daymon Worldwide @ Shaw's Supermarkets	Associate Business Manager
Citigroup Private Bank	Associate Investment Counselor
Estee Lauder	Financial Analyst
Daimlerchrysler AG	Controller
Paris Saint Denis Athletisme Competition	
Axa Investment Managers	Middle-Office Mutual Funds
1 Home Rebate	
<u>Management</u>	
Public & Commercial Information Systems As	Business Planning & Development Manager
Virtual, Inc	Business Development
Accenture	Technical Support Analyst
United Media	Approvals Coordinator
Desanctis Insurance Agency	Admin
Atlantic Components	Sales Account Manager
Fidelity Investments	Print Operator
The Hartford	Underwriter
Seaport Hotel	Reservation Sales Agent
Mbna Marketing	Acct Manager
Gillette	Service Rep
Enterprise Rent-A-Car	Assistant Manger
Bisk Education	Sales Rep
Nan Hwa (Express) Travel Service Ltd.	Executive Director
Investors Bank & Trust Company	Mutual Fund Accountant
Ikon Office Solutions	Sales Rep
Eli Nelly & Co	Pharmaceuticals Sls Rep
Piselli Construction	Jr VP of Development
Reebok International	Rockport Account Svc Rep
<u>Marketing</u>	
Reebok International, Ltd.	Athlete Service Representative
Ernst & Young	People Consultant
GE Modular Space	Sales Representative
National Football League	Assistant Youth Football Fund
Asset Marketing Systems	Assistant Marketing Consultant
Bristol Myers-Squibb Medical Imaging	Territory Hospital Manager
Citigroup	Shareholder Service Rep
Kettle Cuisine	Marketing Associate
Resources Connection	Administrative Assistant
Monster.Com	Campaign Manager

(Continued)

Table 15 (Continued)

<u>Employer</u>	<u>Job Title</u>
<u>Marketing (continued)</u>	
ITT Industries	Sales Analyst, The Americas
Reebok International Limited	Production Tracking Analyst
Sunlife Financial	Customer Service Representative
Genzyme Corporation	Financial Assistant
Computerworld, Inc	Online Sales Assoc
Parkinson Technologies	Marketing Coordinator
Joseph Gann Jewelers	Sales Associate
Bitpipe, Inc.	Marketing Specialist
Mpg Arnold	Associate Client Accountant
Rapp Collins Worldwide	Account Coordinator
Hammond Residential Real Estate/ GMAC	Administration Assistant
Northeastern University	Assistant Residence Director
Surgi-Care, Inc.	A/R Rep.
WBZ-TT, CBS Boston	Sales Assistant
VNU/ Billboard Information Group	Sales And Telemarketing Asst (Billboard Magazine)
Campusfundraiser	Fundraising Manager
Shawmut Design And Construction	Marketing Assistant
The Dartmouth Company	Project Coordinator
Council Rock Consulting, Inc.	Projects Executive
GE Capital	Associate
Deutsche Bank	Investment Accountant
Venturedirect Worldwide	B2B Media Specialist
Wyeth Pharmaceuticals	Sales Rep
<u>MIS</u>	
Amerigas Propane, Inc.	Desktop Services Technician
US Dept of Transp - Volpe National Transp. System	Contract Specialist
Liberty Mutual Group	Financial / Business Analyst
Boston Public Schools	Substitute Teacher
State Street Corp	Portfolio Accountant
State St Corp/Wealth Mgr Services	Internet/Intranet Devel
Endurance International	Marketing Communications Specialist
Bay State Milling	Web Developer
Bain Capital, LLC	Network Infrastructure Analyst
Commonwealth Of Massachusetts	Help Desk Analyst
Symphony Properties	Systems Administrator/ Real Estate Consultant
Ace Tickets	Senior Accounts Manager
Nyfix Inc	Systems And Security Anal
John Hancock Funds	Programmer Analyst
Societe Generale	Analyst
Puma North America	It Specialist
Bigfoot Interactive, Inc.	Implementation Manager
Senko Advanced Components	MIS Administrator
<u>Other Business</u>	
East Coast Realty	Real Estate Salesperson
Boston Realty Advisors	Commercial Brokerage
TI Logistics	Transportation Broker
Arc Of Onondaga	Human Resources Generalist
Dwelling Quest	Salesperson
Polo Ralph Lauren	Logistics Analyst
US Environ Protection Agency	Mngmnt Analyst-Hr

(Continued)

Table 15 (Continued)

<u>Employer</u>	<u>Job Title</u>
Computer Science	
Auspice Inc.	Software Engineer
Network Intelligence Corp.	Information System Developer
Liberty Mutual Insurance Group	Asst Software Eng
X2 Development Corp	Software Engr
Wearguard-Crest, Division Of Aramark	Network Administrator
State Street Corporation	Application Developer
RSA Security Inc.	Systems Engineer
Tri-Com Computer Systems	Service Dept Manager
Boston Medical Center	Research Information Assistant
John Hancock	Senior Programming Analyst
ILEX Oncology	Assistant To The VP of Research
BAE Systems	Engineering Leadership Devel Program Participant
EDS	IT Manager
EBSCO Publishing	Support Specialist
Criminal Justice	
Trane	Inside Sales Specialist
Lowrie, Lando, & Anastasi LLP	Docketing Clerk
United States Army	2nd Lieutenant
Seyfarth Shaw LLP	Legal Assistant
TJX Corp/AJ Wright	Loss Prevention Detective
Ropes & Gray	Paralegal
Norfolk Dedham Group	Claims Adjuster
City Of Brookline	Police Officer
Fidelity Investments	Security Representative
Zelle, Hofmann, Voelbel, Mason & Gette LLP	Receptionist/Legal Secretary
Securitas	Operations Sgt.
Boyle, Morrissey & Campo, P.C.	Paralegal
Office Of The Attorney General	Project Coordinator-Elder Abuse Project
Greater Lynn Mental Health And Retardation Association	Direct Support Professional
The Guardian Force	Security Officer/Shift Supervisor
Apollo Security	Security Officer
Wakenhut	Armed Guard
New England Center For Children	Level Two Teacher
Harvard Pilgrim Health Care	Project Assistant In The Sales Dept
Harmon Law Offices	Legal Assistant
Citizens Bank	Teller
Middlesex District Attorney	Paralegal
Child And Family Services	Senior Counselor
Marriott International	Security Officer
Sheff Law Offices Pc	Project Manager
Div Of Youth & Family Svcs	Family Service Specialist
Middle Earth	Case Manager/Youth Worker
United States Secret Service	Officer
Murphy, Hesse, Toomey & Lehane, LLP	Legal Assistant
Risk Management Foundation	Paralegal
Lawson & Weitzen, LLP	Legal Assistant

(Continued)

Table 15 (Continued)

<u>Employer</u>	<u>Job Title</u>
<u>Criminal Justice (continued)</u>	
Abt Associates, Inc.	Research Assistant
Cornerstone America	Life Agent (Licensed)
Goulston And Storrs	Litigation Paralegal
Ma Doc	Research Analyst
CCE&C	Paralegal
Boston Transportation Dept.	Senior Meter Parking Supervisor I
Knoll Capital Management	Receptionist/Personal Assistant
Engineering	
<u>Chemical</u>	
Genzyme	Process Engineer 1
Genzyme	Assoc Process Engineer
Coler & Colantonio Inc	Engineer I
Stride Rite Corporation	Lab Technician
Johnson & Johnson	Engineer
Genzyme	Associate Process Engineer
Teva Pharmaceutical Ltd	Assistant Engineer
Thermo Electron	Chemical Engineer Temp
<u>Civil</u>	
Environmental Partners Group	Scientist
Jones & Beach Engineers Inc	Project Engr
Simpson Gumpertz & Heger Inc	Engineer
Vanasse Hangen Brustlin, Inc.	Project Engineer
Purcell Asg	Jr Engineer
Metcalf & Eddy Engineers	Engineer
Leslie E. Robertson Associates L.L.P.	Engineer
Walker Parking Consultants	Design Engineer
<u>Computer</u>	
EMC	QA Engineer
EMC	Software QA Engineer
Softartisans, Inc	Software Engineer
Monitor Software	Quality Assurance Engineer
Brown University	Graduate Student
Massachusetts Institute Of Technology	Technical Assistant
Lewiz Communications Inc.	
O.M.A.	Editor
CSPI	Diagnostic Engineer
<u>Electrical</u>	
Brooks Automation	Manufacturing Engineer
Raytheon	Engineer
Raytheon	Electrical Engineer

(Continued)

Table 15 (Continued)

<u>Employer</u>	<u>Job Title</u>
<u>Mechanical, Industrial</u>	
Solidworks Corporation	Technical Support Engineer
Instrumentation Laboratory	Mechanical Engineer And Assistant Project Manager
Factory Five Racing, Inc.	Research & Development Engineer
Performance Modify	Engine Specialist
Hamilton Sandstrand	Project Engineer
Naval Undersea Warfare Ctr	Mech Engineer
Belcan Corporation	Design Engineer
BAE Systems	Mechanical Engineer
Nextgen Realty	Realtor
Raytheon	Mechanical Engr I
Honeywell	Account Manager
Sikorsky Aircraft	Manufacturing Engineer
MJ Research	Systems Engineer
Deutsche Bank	Investment Accountant
Varian Semiconductor Equip	Field Assembler II
DSC Logistics	S.C.I.L Program Participant
Thomas Medical Products	Development Engineer
Joseph Pollak	Associate Project Engineer
Amphenol Pcd	Product Engineer
Engineering Technology	
Eric N. Clark	System Design/Engineer
Superior Controls, Inc	Project Engineer
Boston Scientific	R&D Engineer
EMC	Software Support Engineer
Mestek Inc	Project Engineer
Commonwealth Of Mass	EDP Systems Analyst
Digimarc Identification Systems	Field Implementation Engineer
Provenprocess Medical Devices	Mechanical Product Engineer
Lexicon Projects	Project Manager
Mass Electrical Construction Co	Field Engineer
Depuy Orthopaedics, A J&J Company	Manufacturing Engineer / CNC Programmer
Organogenesis	Account Executive
Teradyne	Production Associate I
	Mech Designer



Raffle Entry Number:

--	--	--	--

ABOUT YOU:

1. What degree did you receive from Northeastern? 1 Bachelor of Arts (BA) (A)
 2 Bachelor of Science (BS)
2. What was your major? _____ (B)
3. What is your *current* employment status? 1 Employed Full-Time (→to #4) (C)
 2 Employed Part-Time, by choice (→to #4)
(Note: Part-time employment is less than 30 hours per week) 3 Employed Part-Time, want FT (→to #4)
 4 Not Employed, Looking for Work (→to #5)
 5 Not Employed, Not Looking for Work (→to #5)

4. ABOUT YOUR JOB (Current Employer and Current Job Information):

- Company Name _____ (D)
- Location City _____ State _____ (E)
- Type of Business (What they do, make, or sell) _____ (F)
- Your Job Title _____ (G)
- Your annual income on this job \$ _____ Per year (H)
- What methods did you use in your job search? *(Please check all that apply)* (I)
- | | |
|--|---|
| <input type="checkbox"/> 1 Previous co-op employer | <input type="checkbox"/> 6 Internet listing other than Husky CareerLink |
| <input type="checkbox"/> 2 Northeastern Career Services/Husky CareerLink | <input type="checkbox"/> 7 Newspaper want ads |
| <input type="checkbox"/> 3 Faculty or staff member | <input type="checkbox"/> 8 Employment agency |
| <input type="checkbox"/> 4 Northeastern Career Fairs | <input type="checkbox"/> 9 Networking |
| <input type="checkbox"/> 5 Friends or relatives | <input type="checkbox"/> 10 Other |
- How long did your job search last? _____ Month(s) (J)
- How soon after graduation did you get this position? 1 Immediately or before graduation (K)
 2 Less than 3 months after
 3 3 months or more after
- Including this position, how many job offers did you receive? _____ (L)
- Is this position with one of your former co-op employers? 1 Yes (M)
 2 No
- If *no*, did you get any offers from former coop employers? 1 Yes (N)
 2 No Why did you not accept the offer? _____
- Was your degree *required* to obtain this position? 1 Yes (O)
 2 No
- How closely is this position related to *your major* at NU? 1 Very closely related (P)
 2 Closely related
 3 Somewhat related
 4 Poorly related
 5 Not related

- How closely is this position related to your *long-term* career goals/aspirations? 1 Very closely related (Q)
 2 Closely related
 3 Somewhat related
 4 Poorly related
 5 Not related
- On a scale from 1 to 10, where 1=Not at all enhanced and 10=Substantially enhanced, please indicate the number that best indicates how much your *coursework* at NU enhanced your ability to do this job _____ (R)
- On a scale from 1 to 10, where 1=Not at all enhanced and 10=Substantially enhanced, please indicate the number that best indicates how much your *coop experience* at NU enhanced your ability to do this job _____ (S)

5. CAREER MANAGEMENT AND JOB SEARCH

When you graduated from Northeastern, how well prepared did you feel with respect to...

- | | Not well Prepared | | | | Very Well Prepared | |
|---|----------------------------|----------------------------|----------------------------|----------------------------|----------------------------|-----|
| → Knowing how to research the businesses or organizations in which you wanted to work | <input type="checkbox"/> 1 | <input type="checkbox"/> 2 | <input type="checkbox"/> 3 | <input type="checkbox"/> 4 | <input type="checkbox"/> 5 | (T) |
| → Knowing where to search for relevant job opportunities | <input type="checkbox"/> 1 | <input type="checkbox"/> 2 | <input type="checkbox"/> 3 | <input type="checkbox"/> 4 | <input type="checkbox"/> 5 | (U) |
| → Identifying your <i>immediate</i> work goals | <input type="checkbox"/> 1 | <input type="checkbox"/> 2 | <input type="checkbox"/> 3 | <input type="checkbox"/> 4 | <input type="checkbox"/> 5 | (V) |
| → Identifying your <i>long-term</i> work goals | <input type="checkbox"/> 1 | <input type="checkbox"/> 2 | <input type="checkbox"/> 3 | <input type="checkbox"/> 4 | <input type="checkbox"/> 5 | (W) |
| → Understanding what it takes to manage your career goals | <input type="checkbox"/> 1 | <input type="checkbox"/> 2 | <input type="checkbox"/> 3 | <input type="checkbox"/> 4 | <input type="checkbox"/> 5 | (X) |

6. ABOUT GRADUATE SCHOOL:

- Are you currently enrolled in a graduate program? 1 Yes, full-time. (Y)
 2 Yes, part-time.
 3 No. (→skip to question #7)
- About your graduate program:
 → What college/university are you attending for graduate study? _____ (Z)
 → What is your major? _____ (AA)
 → What is your expected degree? 1 Masters (MA, MS, MBA, etc.) (AB)
 2 Doctorate (Ph.D., Ed. D., etc.)
 3 Law (JD, LL.B.)
 4 Medical (MD, OD, DDS, DVM)
 5 Other (Please specify) _____

7. ABOUT CO-OP AT NU

→ In what years did you participate in co-op? (Check *each* year that applies) (AC)

- Sophomore
 - Middler
 - Junior
 - Senior
 - None OR Did not participate in co-op
- (Thank You for Completing this Survey)**

→ How many total quarters were you out on co-op by the time you graduated? _____ quarters (AD)

→ How many different co-op employers (businesses) did you work for? _____ co-op employers (AE)

→ Do you think you were better prepared for your post-graduation job as a result of your co-op experience compared to other college graduates who had not participated in co-op? (AF)

- 1 Yes, much better prepared
- 2 Yes, somewhat better prepared
- 3 No, not better prepared
- 4 Don't know
- 5 Not employed currently

→ Do you think your co-op experience had a positive impact on your post-graduation starting salary? (AG)

- 1 Yes, a substantially positive impact
- 2 Yes, a slightly positive effect
- 3 No effect
- 4 Don't know
- 5 Not employed currently

→ Listed below are five benefits that some students may experience from participating in co-op. Please rate each one from 1 (Not very beneficial) to 5 (Very beneficial) in terms of its contribution to you.

	Not Very Beneficial...		...Very Beneficial			
	□1	□2	□3	□4	□5	
A. Provides opportunity for career networking	□1	□2	□3	□4	□5	(AH)
B. Enhances classroom learning	□1	□2	□3	□4	□5	(AI)
C. Promotes personal and professional growth	□1	□2	□3	□4	□5	(AJ)
D. Helps finance my education	□1	□2	□3	□4	□5	(AK)
E. Clarifies career goals/career exploration	□1	□2	□3	□4	□5	(AL)

→ Which *one* of the above (A,B,C,D,E) was the *single most important benefit to you*? _____ (AM)

→ Please rank the following in terms of their importance to you while searching for a coop job (Please pick 3 only)

	Most <u>Import.</u>	2 nd Most <u>Import.</u>	3 rd Most <u>Import.</u>	
→ Location of the job (e.g., close to Boston, close to public trans.)	□	□	□	(AN)
→ Wage rate offered by coop employer	□	□	□	(AO)
→ Opportunity to gain experience with 'desirable' employer	□	□	□	(AP)
→ The type of position or job duties	□	□	□	(AQ)
→ Opportunity to work with classmates	□	□	□	(AR)
→ Opportunity to learn more upon return to class	□	□	□	(AS)
→ Other _____	□	□	□	(AT)

→ To what extent do you agree with the following statements:

	Strongly Disagree	Disagree	Somewh at Agree	Agree	Strongly Agree	
The classes I took contributed to my ability to perform my coop position.	□1	□2	□3	□4	□5	(AU)
I acquired new knowledge/skills that enhanced my performance in my academic coursework.	□1	□2	□3	□4	□5	(AV)
Northeastern did a good job integrating my academic and coop learning	□1	□2	□3	□4	□5	(AW)

→ Characterize your overall satisfaction with your coop experiences

Very Dissat. <input type="checkbox"/> 1	Dissatis. <input type="checkbox"/> 2	Neutral <input type="checkbox"/> 3	Satisfied <input type="checkbox"/> 4	Very Satisfied <input type="checkbox"/> 5	(AX)
---	---	---------------------------------------	---	---	------

8. ABOUT YOUR MOST RECENT CO-OP JOB

→ We would like to know how well or poorly each of the following describes your co-op experience. Thinking of your most recent co-op job, please rate the following statements on a ten-point scale (1=Not true at all, 10=Very true)

<u>STATEMENT</u>	Not True...							...Very True			
	1	2	3	4	5	6	7	8	9	10	
Your job was intellectually challenging	<input type="checkbox"/>	<input type="checkbox"/>	<input type="checkbox"/>	<input type="checkbox"/>	<input type="checkbox"/>	<input type="checkbox"/>	<input type="checkbox"/>	<input type="checkbox"/>	<input type="checkbox"/>	<input type="checkbox"/>	(AY)
You used writing skills regularly	<input type="checkbox"/>	<input type="checkbox"/>	<input type="checkbox"/>	<input type="checkbox"/>	<input type="checkbox"/>	<input type="checkbox"/>	<input type="checkbox"/>	<input type="checkbox"/>	<input type="checkbox"/>	<input type="checkbox"/>	(AZ)
You used research skills regularly	<input type="checkbox"/>	<input type="checkbox"/>	<input type="checkbox"/>	<input type="checkbox"/>	<input type="checkbox"/>	<input type="checkbox"/>	<input type="checkbox"/>	<input type="checkbox"/>	<input type="checkbox"/>	<input type="checkbox"/>	(BA)
You used state of the art technology regularly	<input type="checkbox"/>	<input type="checkbox"/>	<input type="checkbox"/>	<input type="checkbox"/>	<input type="checkbox"/>	<input type="checkbox"/>	<input type="checkbox"/>	<input type="checkbox"/>	<input type="checkbox"/>	<input type="checkbox"/>	(BB)
You applied the knowledge learned in your major field of study regularly	<input type="checkbox"/>	<input type="checkbox"/>	<input type="checkbox"/>	<input type="checkbox"/>	<input type="checkbox"/>	<input type="checkbox"/>	<input type="checkbox"/>	<input type="checkbox"/>	<input type="checkbox"/>	<input type="checkbox"/>	(BC)
You worked as part of a team of professionals	<input type="checkbox"/>	<input type="checkbox"/>	<input type="checkbox"/>	<input type="checkbox"/>	<input type="checkbox"/>	<input type="checkbox"/>	<input type="checkbox"/>	<input type="checkbox"/>	<input type="checkbox"/>	<input type="checkbox"/>	(BD)
You were given a chance to do the things you do best	<input type="checkbox"/>	<input type="checkbox"/>	<input type="checkbox"/>	<input type="checkbox"/>	<input type="checkbox"/>	<input type="checkbox"/>	<input type="checkbox"/>	<input type="checkbox"/>	<input type="checkbox"/>	<input type="checkbox"/>	(BE)
Your job required independent thought or action	<input type="checkbox"/>	<input type="checkbox"/>	<input type="checkbox"/>	<input type="checkbox"/>	<input type="checkbox"/>	<input type="checkbox"/>	<input type="checkbox"/>	<input type="checkbox"/>	<input type="checkbox"/>	<input type="checkbox"/>	(BF)
Your job gave you the opportunity to interact with people	<input type="checkbox"/>	<input type="checkbox"/>	<input type="checkbox"/>	<input type="checkbox"/>	<input type="checkbox"/>	<input type="checkbox"/>	<input type="checkbox"/>	<input type="checkbox"/>	<input type="checkbox"/>	<input type="checkbox"/>	(BG)
You got the feeling that the job itself was very significant or important in the broader scheme of things	<input type="checkbox"/>	<input type="checkbox"/>	<input type="checkbox"/>	<input type="checkbox"/>	<input type="checkbox"/>	<input type="checkbox"/>	<input type="checkbox"/>	<input type="checkbox"/>	<input type="checkbox"/>	<input type="checkbox"/>	(BH)
You knew whether or not you were performing well or poorly on the job	<input type="checkbox"/>	<input type="checkbox"/>	<input type="checkbox"/>	<input type="checkbox"/>	<input type="checkbox"/>	<input type="checkbox"/>	<input type="checkbox"/>	<input type="checkbox"/>	<input type="checkbox"/>	<input type="checkbox"/>	(BI)
Your supervisor was competent in doing her or his job	<input type="checkbox"/>	<input type="checkbox"/>	<input type="checkbox"/>	<input type="checkbox"/>	<input type="checkbox"/>	<input type="checkbox"/>	<input type="checkbox"/>	<input type="checkbox"/>	<input type="checkbox"/>	<input type="checkbox"/>	(BJ)
Your supervisor tried to enhance your learning on the job	<input type="checkbox"/>	<input type="checkbox"/>	<input type="checkbox"/>	<input type="checkbox"/>	<input type="checkbox"/>	<input type="checkbox"/>	<input type="checkbox"/>	<input type="checkbox"/>	<input type="checkbox"/>	<input type="checkbox"/>	(BK)

→ How closely was your most recent coop job related to *your major* at NU? (BL)

<input type="checkbox"/>	1	Very closely related
<input type="checkbox"/>	2	Closely related
<input type="checkbox"/>	3	Somewhat related
<input type="checkbox"/>	4	Poorly related
<input type="checkbox"/>	5	Not related

→ How closely was your most recent coop job related to your *long-term* career goals/aspirations? (BM)

<input type="checkbox"/>	1	Very closely related
<input type="checkbox"/>	2	Closely related
<input type="checkbox"/>	3	Somewhat related
<input type="checkbox"/>	4	Poorly related
<input type="checkbox"/>	5	Not related

→ Would you recommend a co-op based education to a friend who was making plans to attend college? (BN)

<input type="checkbox"/>	1	Yes
<input type="checkbox"/>	2	No

Thank you for taking the time to complete this survey.

We would like to hear from you! If you have any suggestions or concerns about how we might improve our services and activities, please jot down your ideas and return them with this survey, or e-mail us at the
Department of Career Services: ca.lyons@neu.edu